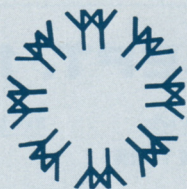


MS VICTORIA **3 FALL CRUISES TO** **expo67**

**Your ship
is your
luxurious
hotel**



from New York

SEPT. 5 • 11 DAYS

With a stop at Gaspé • from \$345

SEPT. 16 • 11 DAYS

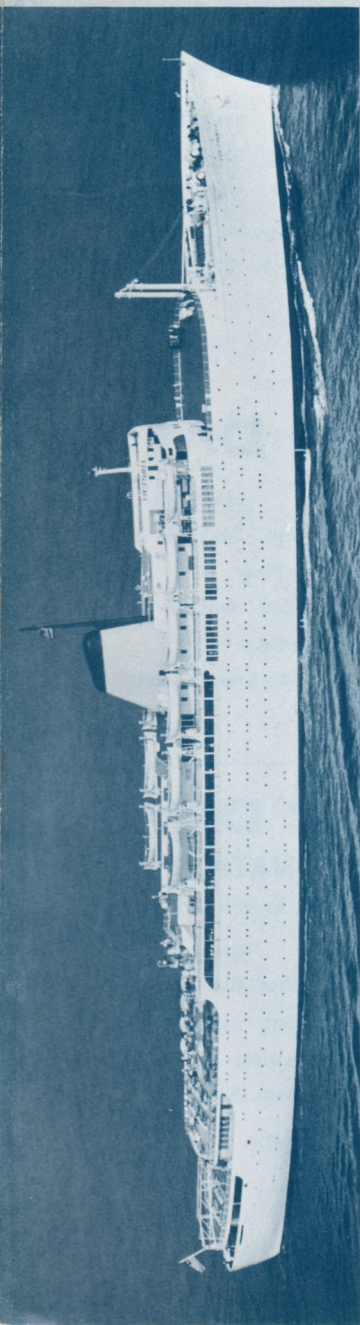
Cruising the Saguenay • from \$345

SEPT. 27 • 7 DAYS

AIR-SEA COMBINATION

With a stop at Gaspé • from \$250*

*Includes return air fare to New York



expo67

3 FALL CRUISES

SAILING FROM NEW YORK

SEPT. 5 • 11 DAYS

<u>Ports</u>	<u>Due to Arrive</u>	<u>Due to Sail</u>
NEW YORK	Tue. Sept. 5- 10 pm
GASPE	Fri. Sept. 8- 9 am	Fri. Sept. 8- 3 pm
Cruising the St. Lawrence River		
MONTREAL	Sun. Sept. 10- 8 am	Tue. Sept. 12- 5 am
Cruising the St. Lawrence River		
NEW YORK	Sat. Sept. 16- 7 am

SEPT. 16 • 11 DAYS

<u>Ports</u>	<u>Due to Arrive</u>	<u>Due to Sail</u>
NEW YORK	Sat. Sept. 16- 5 pm
Cruising the St. Lawrence River		
MONTREAL	Wed. Sept. 20- 5 pm	Sat. Sept. 23- 8 am
Cruising the St. Lawrence River		
Saguenay River	Cruising Sun. Sept. 24— 6 am to noon	
NEW YORK	Wed. Sept. 27- 2 pm

SEPT. 27 • 7 DAYS

SEA-AIR COMBINATION

Ingres Line provides air passage to New York

<u>Ports</u>	<u>Due to Arrive</u>	<u>Due to Sail</u>
NEW YORK	Wed. Sept. 27- 11 pm
GASPE	Sat. Sept. 30- 9 am	Sat. Sept. 30- 3 pm
Cruising the St. Lawrence River		
MONTREAL	Mon. Oct. 2- 8 am.	Wed. Oct. 4*

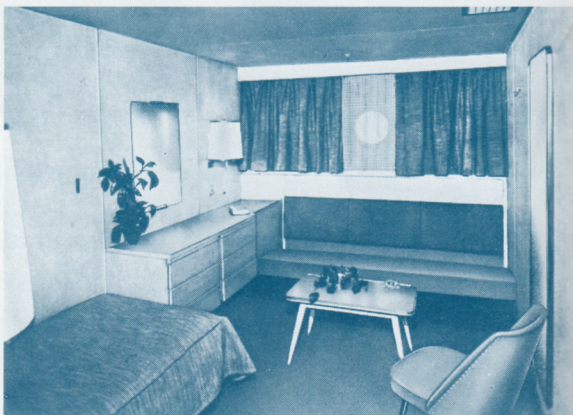
*return to New York by air via scheduled flights

ms VICTORIA

Your luxury hotel throughout



Typical stateroom of Sapphire and Emerald Decks.



Typical stateroom of Amber and Coral Decks.



Famous VICTORIA Service

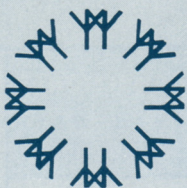
The magnificent VICTORIA offers you the same superlative service and warm hospitality which characterizes her year-round Caribbean cruises. You become the special guest of a dedicated all-Italian crew and American cruise staff concerned solely with your pleasure and comfort.

FARES		FULLY AIR-CONDITIONED		EXPO CRUISES	
PER PERSON		EVERY CABIN WITH			
Based on 2 in a room		PRIVATE FACILITIES			
Code letters	ACCOMMODATIONS	11 Days	7 * Days		
AA	SUITES: WITH TWO BEDS, SITTING ROOM ALCOVE WITH STUDIO BED, TUB BATH, SHOWER AND TOILET: SAPPHIRE DECK: Eleuthera, Bimini, Inagua, Antigua	640	465		
BB	SUITES: WITH ONE BED, SITTING ROOM ALCOVE WITH STUDIO BED, TUB BATH, SHOWER AND TOILET: SAPPHIRE DECK: Andros, Abaco	590	430		
CC	OUTSIDE ROOMS WITH TWO BEDS, TUB BATH, SHOWER AND TOILET: SAPPHIRE DECK: S-3, 4, 7, 8, 11, 12, 26, 27, 31, 34, 35, 38, 39, 42, 43, 46	535	390		
DD	EMERALD DECK: E-3, 4, 7, 8, 11, 12, 20, 21, 24, 25, 28, 29, 32, 33	515	375		
EE	INSIDE ROOM WITH TWO BEDS, TUB BATH, SHOWER AND TOILET: CORAL DECK: C-33	430	310		
FF	OUTSIDE ROOMS WITH TWO BEDS — SHOWER AND TOILET: SAPPHIRE DECK: S-16, 17, 20, 21, 22, 23, 24, 25, 29, 32, 33, 36, 37, 40, 41, 44, 45, 48	520	380		
GG	SAPPHIRE DECK: S-47, 49, 50, 52	510	375		
HH	EMERALD DECK: E-1, 2, 5, 6, 9, 10, 14, 15, 18, 19, 22, 23, 26, 27, 30, 31, 34, 35, 37, 38, 40, 41, 42, 43, 46, 47, 48, 49, 52, 53, 54, 55, 58, 59, 60, 61, 62, 63, 64, 65, 66, 69	505	370		
JJ	EMERALD DECK: E-68, 72, 73, 74, 75, 78, 79, 83	495	360		
KK	EMERALD DECK: E-82, 85	450	325		
LL	AMBER DECK: A-1, 2, 3, 4, 5, 6, 7, 8, 9, 10	440	320		
MM	INSIDE ROOMS WITH TWO BEDS — SHOWER AND TOILET: SAPPHIRE DECK: S-28, 30	485	350		
NN	EMERALD DECK: E-39, 67	440	320		
OO	AMBER DECK: A-22, 26, 36	395	290		
PP	OUTSIDE ROOMS WITH ONE BED AND STUDIO BED — SHOWER AND TOILET: SAPPHIRE DECK: S-1, 2, 5, 6, 9, 10, 14, 15, (Convertible to Daytime Living Room)	510	370		
QQ	EMERALD DECK: E-16, 17	460	335		
RR	CORAL DECK, C-1, 2, 3, 4, 5, 6, 7, 8, 9, 10, 11, 12, 14, 15, 16, 17, 18, 20, 21, 22, 24, 25, 26, 27, 29, 31	445	325		
SS	CORAL DECK: C-28, 30, 32, 34, 35, 37, 39, 41	430	310		
TT	AMBER DECK: A-11, 12, 16, 17, 18, 19, 20, 21, 23, 24, 25, 27, 28, 29, 30, 32	405	295		
UU	OUTSIDE ROOMS WITH ONE BED — SHOWER AND TOILET: SAPPHIRE DECK: S-18, 19	Single 595	430		
VV	CORAL DECK: C-42, 49	Single 495	360		
WW	INSIDE ROOMS WITH ONE BED — SHOWER AND TOILET: EMERALD DECK: E-44, 45, 50, 51, 56, 57	Single 540	390		
XX	EMERALD DECK: E-70, 71, 76, 77, 80, 81, 87 These cabins are fully equipped to accommodate a second person in upper berth.	Single 525	380		
YY	OUTSIDE ROOMS WITH ONE BED AND UPPER BED — SHOWER AND TOILET: CORAL DECK: C-36, 38, 40, 43, 45, 47	375	275		
ZZ	AMBER DECK: A-31, 33, 34, 38	345	250		

Children's fares: Infants under one year: Free. Children under 12 years: Half rate.

***RATES FOR THE 7-DAY CRUISE INCLUDE AIR TRANSPORTATION
FROM MONTREAL TO N.Y. ON SCHEDULED AIRLINES**

ms VICTORIA



the perfect combination

of an extraordinary world spectacle and a glamorous cruise on the luxurious VICTORIA. Expo 67, with the theme of "Man and His World", is the first official International Exhibition to be held in North America.

Here, sixty nations present their aspirations and achievements through stimulating and imaginative exhibits displaying their cultures, traditions and scientific development. There will be plenty of fun, too—international talent of stage and concert hall, sports, outdoor spectacles, an international shopping center and a huge amusement area with a variety of entertainment to please all tastes. You will meet people from all corners of the globe, be fascinated by their different ways of life.

And what better way to enjoy all this than to make your home on the incomparable VICTORIA! No need to worry about transportation, hotels or baggage problems. There will be ample time to take in the attractions of the Fair. Your ship docks within short walking distance of the entrance.

Designed exclusively for year-round cruising, the VICTORIA offers superlative accommodations, beautiful public rooms, magnificent decks and an unsurpassed Continental cuisine. Because of the limited cruise membership, you'll enjoy an intimate, friendly atmosphere and a highly personalized service. Throughout there is always something to do, something to see...or just relax in luxurious laziness.

The cruise itineraries too, offer additional attractions. The Sept. 5th and Sept. 27th cruises schedule stops at charming Gaspé, while the Sept. 16th voyage features the scenic fjord-like Saguenay River. If your time is limited, the 7-day "sea-air" trip is ideal. We provide air transportation back to New York. So make your reservations now—and have the time of your life—going to the Fair!

MS VICTORIA



expo67

- ★ Your de luxe luxury hotel throughout
- ★ Ship docks short distance from Fair — ample time to enjoy its attractions.
- ★ All cabins with private bathrooms.
- ★ Cruise membership limited to 450 guests.
- ★ Epicurean dining, festive activities.
- ★ Modest rate difference for consistently superior accommodations, all outside.

SAFETY INFORMATION: The M/S VICTORIA registered in Liberia meets International Safety Standards for new ships developed in 1948.

INCRESC  LINE
Luxury Cruises

277 PARK AVENUE, NEW YORK, N.Y. 10017
Telephone (212) 826-7000

FOR INFORMATION AND RESERVATIONS: