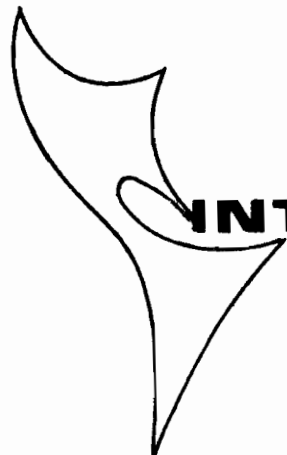


FACT SHEET



INTERAMA

MIAMI INTERNATIONAL AIRPORT
MIAMI, FLORIDA, U. S. A.
TELEPHONE NEWton 3-3246
POST OFFICE BOX 59-2294

1. WHAT IS INTERAMA ?

INTERAMA will be the first permanent international exposition. INTERAMA will contain the outstanding features of Disneyland, a world's fair and a trade fair, yet be entirely different by presenting unique features of its own. Unlike world fairs which are open for a definite but limited period, or trade fairs and state expositions which are seasonal or of short duration - INTERAMA will be open seven days a week on a year-round basis, and year after year.

2. WHAT IS THE THEME OF INTERAMA ?

INTERAMA will portray the AMERICAN WAY OF LIFE - PROGRESS WITH FREEDOM. INTERAMA will show what the Americas have achieved without the sacrifice of civil liberties and individual freedom - within the framework of democratic institutions. Through dynamic exhibits, events and live performances that are constantly revised and updated, INTERAMA will bring together, under freedom, the governments and industries of the Americas in a spirit of good will and understanding and provide a continuous exchange of cultures, ideas and peoples.

3. IS INTERAMA A STATE, NATIONAL OR INTERNATIONAL EXPOSITION?

INTERAMA will be world-wide in scope, although special emphasis will be given to exhibits and pavilions of the Western Hemisphere nations.

4. WHERE IS INTERAMA LOCATED ?

INTERAMA is located in Miami, Florida, the only sub-tropical area in continental United States. As the traditional host to visitors from all parts of the Hemisphere, the city is known as the "Gateway of the Americas". On the east INTERAMA overlooks the Atlantic Ocean. On the south INTERAMA is bordered by Biscayne Bay.

exhibits to tell the story of man and PROGRESS WITH FREEDOM - to tell the story of today's tremendous array of scientific and productive know-how -- know-how that stems from the meeting of men's minds and men meeting to do business. Because of our system of free enterprise, these exhibits will show how the AMERICAN WAY OF LIFE has stimulated scientific and industrial accomplishments in transportation, communications, the development of our natural resources and has provided an abundance of the necessities and luxuries of life.

The Cultural Area

This is the meeting place of the Arts - the cultural classroom of the Americas. An Amphitheater with a floating stage will present native music -- a ballet -- a concert. A museum will hold changing exhibits of every art form -- from the ancient Inca, Aztec and Toltec civilizations to the modern form of silver handicrafts, painting, and music. An Opera House will yield its stage to every famous company, work or artist. Other theaters will present Shakespearean and Greek classics or this year's prize play or musical. An enormous, enclosed Arena will be used for such activities as rodeos, ice shows and major sports events.

The Festival Area

This is the meeting place for an unprecedented Inter-American Festival - the meeting place that provides recreation and entertainment that captures the lighthearted spirit of the peoples of the Americas. For the children it is a world that brings to life their storybook heroes and legends - a world in which they can actually participate - a world of make-believe come true. For adults, it is a world of sophisticated entertainment and events and the place to mingle with their hemispheric neighbors in an exciting jubilee. Here, youngsters -- of all ages -- can pack up their dreams and travel through a living pageant of our colorful history past or join the science "explorers" of our history future.

9. DOES INTERAMA HAVE A SPECIAL THEME SYMBOL?

The Tower of Freedom is the theme symbol of INTERAMA. It is destined to take its place with the other great monuments of the world ... physically and spiritually. Present plans call for the Tower of Freedom to spring from the waters of INTERAMA'S man-made lagoon. At its base will be fountains of light, each representing one of the nations

of the Hemisphere. Three reaching stems, symbolizing the three Americas, will merge in interdependence and soar 1,000 feet skyward. From the tower's base, visitors will be elevated to the sight-seeing levels and the Tower's International Restaurant. At the top ... hundreds of feet in the air ... visitors will view the entire expanse of the subtropical playground of the United States. When this conception is formalized, this theme symbol of INTERAMA will become an inspirational reality of hemispheric PROGRESS WITH FREEDOM.

10. WHAT IS INTERAMA'S CLUB OF THE AMERICAS?

This is a housing and meeting facility located in INTERAMA'S International Area to accommodate foreign dignitaries and personnel.

11. WHEN WILL INTERAMA OPEN?

INTERAMA is scheduled to become an operating reality in 1966.

12. WHO HAS ENDORSED INTERAMA?

- a. President Harry Truman
- b. President Dwight Eisenhower
- c. The Congress of the United States
- d. The Governor of the State of Florida
- e. The City of Miami, Dade County and the municipalities in the county
- f. The Legislature of the State of Florida
- g. The Miami-Dade County Chamber of Commerce
- h. The Florida Council of 100
- i. Latin American countries

13. HOW MANY PEOPLE ARE EXPECTED TO VISIT INTERAMA?

According to authoritative surveys - - - 75,000,000 people will visit INTERAMA in the first five years.

14. WHAT IS THE PRESENT STATUS OF CONSTRUCTION OF INTERAMA?

Dredging and filling of the INTERAMA site is essentially completed. The waterways through the grounds cannot be completed until the filled areas have been allowed to settle. Construction on the grounds could

commence during the first quarter of 1964.

15. WILL INTERAMA BUILD ITS OWN ROADS?

INTERAMA'S road system will require 11 miles of internal roads and 8 miles of access roads. The building of these roads - estimated to cost \$8 to \$10 million - have been pledged by the Florida State Administration. Construction of roads will begin after the land has been filled and settled.

16. HAS INTERAMA BEEN ENDORSED BY THE LATIN AMERICAN NATIONS?

INTERAMA has been endorsed by the nations of Latin America. The spirit and substance of INTERAMA'S goals parallel and support those of the ALLIANCE FOR PROGRESS.

17. WILL INTERAMA HAVE A FOREIGN TRADE ZONE?

INTERAMA has been authorized by the State of Florida to apply for a foreign trade zone to the United States Government. If the need develops, INTERAMA will make this request.

18. WHAT LEGISLATION HAS THERE BEEN IN SUPPORT OF INTERAMA?

On September 27, 1950, a joint resolution of both houses of Congress supported the establishment of INTERAMA for the development of improved relations and increased trade with the republics of Latin America and called upon officials and agencies of the Federal Government to assist and cooperate with INTERAMA.

On May 15, 1951, the Inter-American Center Authority was created and constituted as a corporate agency of the State of Florida.

On January 30, 1952, INTERAMA was supported by Presidential Proclamation.

19. WHO IS RESPONSIBLE FOR THE OPERATION OF INTERAMA?

INTERAMA'S operating agency is the Inter-American Center Authority. This authority is a State of Florida, non-profit, self-sustaining agency with corporate powers.

20. WHO ARE THE MEMBERS OF THE INTER-AMERICAN CENTER AUTHORITY?

The Authority consists of eleven members. Governor Farris Bryant of the State of Florida is Ex Officio Chairman. The other ten members - as appointed by the Governor are:

Dr. Irving E. Muskat	Standing Chairman
Robert King High	Vice Chairman
David W. Walters	Secretary-Treasurer
Frank Smathers, Jr.	Chairman, Finance Committee
Joseph J. Orr	Chairman, Planning Committee
Harry Hood Bassett	Member
Milton E. Grusmark	Member
B. E. Hearn	Member
J. N. McArthur	Member
Louis J. Hector	Member
W. H. Walker	Lifetime Honorary Chairman

21. HOW IS INTERAMA FINANCED?

INTERAMA is financed by the Inter-American Center Authority. A \$21,000,000 bond issue (by Goodbody & Co.) has been validated by the Circuit Court of Dade County and affirmed by the Florida Supreme Court. Eight million dollars (\$8,000,000) of this amount is now being used for the preparation of INTERAMA'S site and for administrative purposes. This amount was oversubscribed and is widely held.

22. HAS THERE BEEN SIGNIFICANT COOPERATION FROM THE STATE OF FLORIDA?

The Florida State Administration has pledged the design and construction of roads estimated to cost \$8 - \$10 million.

Also, the City of Miami has contributed 1,700 acres of land valued, after development, at \$50 to \$60 million. Dade County made \$500,000 available,

of which approximately \$325,000 was used for the preliminary study, design and engineering data necessary to determine the scope and cost of the INTERAMA program prior to floating a bond issue.

23. TO WHAT EXTENT WILL THE U. S. GOVERNMENT PARTICIPATE IN INTERAMA?

INTERAMA has not requested Federal funds to finance its own construction activities. However, INTERAMA has asked the U. S. Government to finance a Federal Exhibit and to assist the Latin American nations in participating in INTERAMA to the extent of providing funds to build the pavilions to house their exhibits.

24. WHAT ECONOMIC IMPACT WOULD CONSTRUCTION OF INTERAMA HAVE ON SOUTH FLORIDA?

It is conservatively estimated that INTERAMA will create 54,000 jobs spread over a three year period.

25. WHAT ECONOMIC IMPACT WILL INTERAMA HAVE ON THE STATE OF FLORIDA?

On the basis of 15,000,000 annual admissions to INTERAMA, there will be approximately one billion dollars (\$1,000,000,000) of additional tourist expenditures in the State of Florida. To service the additional millions of visitors who will come to Florida to visit INTERAMA, 100,000 new permanent jobs will be generated.

26. WHO WILL BE THE EXHIBITORS AND CONCESSIONAIRES AT INTERAMA?

Governments; trade, business and professional associations; cultural organizations and the "Who's Who of American Industry" will be invited to exhibit at INTERAMA. These exhibitors and concessionaires will come from all over the world but, there will be special emphasis on the participation of the Latin American nations.

27. WHO WILL BUILD EXHIBITS AND CONCESSIONS?

Exhibits and concessions will be built by industries, organizations and

governments. The Inter-American Center Authority is responsible for landscaping, supervising and maintaining INTERAMA'S grounds and installation of utilities to the principal four areas and for certain special features and facilities.

28. WILL EXHIBITORS BE REQUIRED TO CONFORM TO A SPECIAL STYLE OF ARCHITECTURE?

INTERAMA'S building code has been specifically designed to permit the widest range for creative design in order to gain the maximum benefit from its beautiful, park-like setting. The tropical green of South Florida's foliage will be the predominating color as a fitting back-drop for INTERAMA'S buildings and exhibits. The effect will be that of a lush, sub-tropical park separating the principal exhibit centers, so that the architectural design of exhibit and pavilion structures will complement and blend with each other.

29. WILL INTERAMA PLACE RESTRICTIONS ON EXHIBITS?

INTERAMA welcomes cooperative industry exhibits, exhibits from individual companies, governments or groups of governments or industries that fit into its basic theme - - - THE AMERICAN WAY OF LIFE - - - PROGRESS WITH FREEDOM.

30. WILL VISITORS PAY TO SEE EACH EXHIBIT AT INTERAMA?

Once the admission fee is paid at the gate, no further charges will be made to see the exhibits at INTERAMA. However, there will be a charge by concessions and for certain special events and facilities.

31. HOW WILL VISITORS TRAVEL THROUGH INTERAMA'S GROUNDS?

Unlike ordinary fairs and expositions, automobiles will be permitted to enter INTERAMA'S grounds. Visitors can approach any of its four principal areas by automobile and explore them on foot, by boat or sky cable car. There will be parking areas throughout INTERAMA'S complex.

32. WILL PRODUCTS OR SERVICES BE SOLD BY INTERAMA EXHIBITORS?

INTERAMA'S present plans call for exhibitors not to sell merchandise or services in their exhibits. However, they may take orders for outside delivery. The International Bazaar located in the International Area will be permitted to sell merchandise.

33. WILL VISITORS BE ABLE TO SEE INTERAMA IN A SINGLE DAY?

INTERAMA will have so many different and constantly changing exhibits, attractions, exciting events and special programs that seeing INTERAMA in one day would be virtually impossible. Even if it were possible, most visitors, influenced by INTERAMA'S unhurried, subtropical atmosphere would be inclined to relax. Unlike other projects of a similar nature, INTERAMA offers the right of 'choice' to visitors. They can visit the pavilion of one of the nations - take a ride in a sky cable car - join the fun in the Festival Area, see an industrial exhibit, visit a rocket launching pad, dine in the International Restaurant high up in the Tower of Freedom, or picnic under shade trees on the grounds of one of INTERAMA'S many beautiful park areas.

INTERAMA will be a center of activity day and night so that visitors of all ages and interests can select the activities of their choice and set their own pace. With INTERAMA'S exhibits and programs constantly changing, each new visit will offer new and stimulating events and experiences.

34. WHAT ARE INTERAMA'S PARKING FACILITIES?

There will be approximately 130 acres for parking located with convenient accessibility to each area as follows:

International Area	25 acres of parking
Industrial Area	25 acres of parking
Cultural Area	50 acres of parking
Festival Area	30 acres of parking

35. HOW WILL VISITORS REACH INTERAMA?

By Air: By commercial airlines to Miami International Airport, Palm Beach and Broward International Airports and by private plane to the

Tamiami and Opa-Locka Airports. Miami International Airport with 113 domestic and foreign air carriers is one of the largest airports in the hemisphere and connects Miami with all parts of the world.

By Sea: Miami's new Dodge Island deep water port in Biscayne Bay and Fort Lauderdale's Port Everglades give harbor to major cruise ships from all over the world. Private boats can navigate the Intracoastal Waterway which provides a safe inland waterway route from Maine to Florida and berth at INTERAMA'S marina or at scores of other marinas in the metropolitan area.

By Highway: Eight major highways radiate from INTERAMA and the metropolitan area - United States Federal Highways No. 1, No. 1A, No. 27, No. 41, No. 441 - Interstate Highway No. 95, Florida State Road No. 4 and Florida's Sunshine Parkway.

By Rail: The Florida East Coast Railway, Atlantic Coast Line Railroad and the Seaboard Air Line Railroad provide major rail links to Miami.

By Bus: Both Greyhound and Trailways bus systems serve the area.

36. WILL THERE BE SUFFICIENT ACCOMMODATIONS TO HOUSE INTERAMA VISITORS?

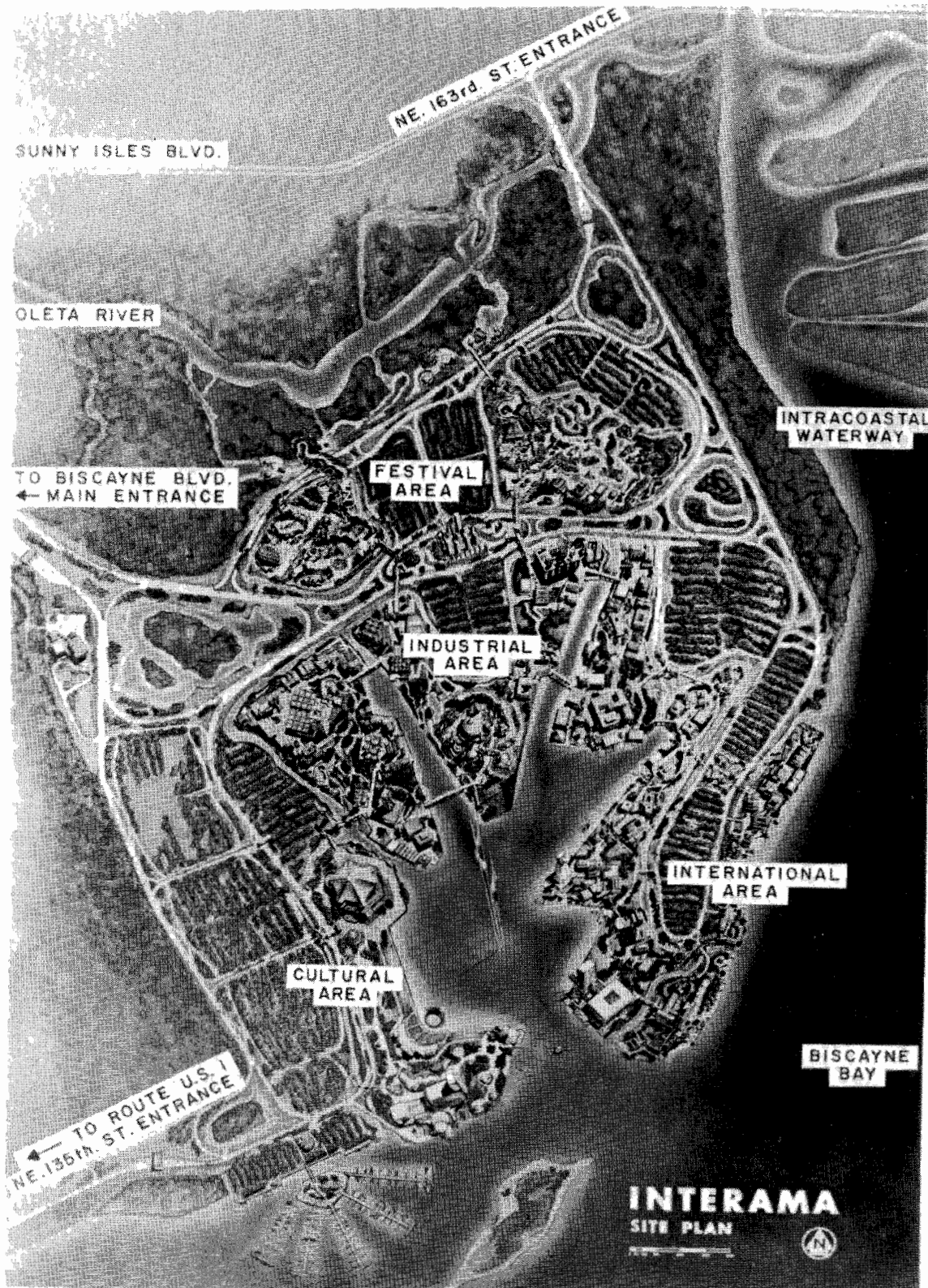
In the tri-county Gold Coast Area, there are living accommodations of every size or type, 59,036 hotel rooms ... 28,212 motel rooms ... 27,368 rooming units ... 110,661 apartments cater to any length of stay or desired rate. In addition, excellent facilities are available for thousands of tourist-house trailers.

37. WILL THERE BE SUFFICIENT DINING ACCOMMODATIONS FOR VISITORS?

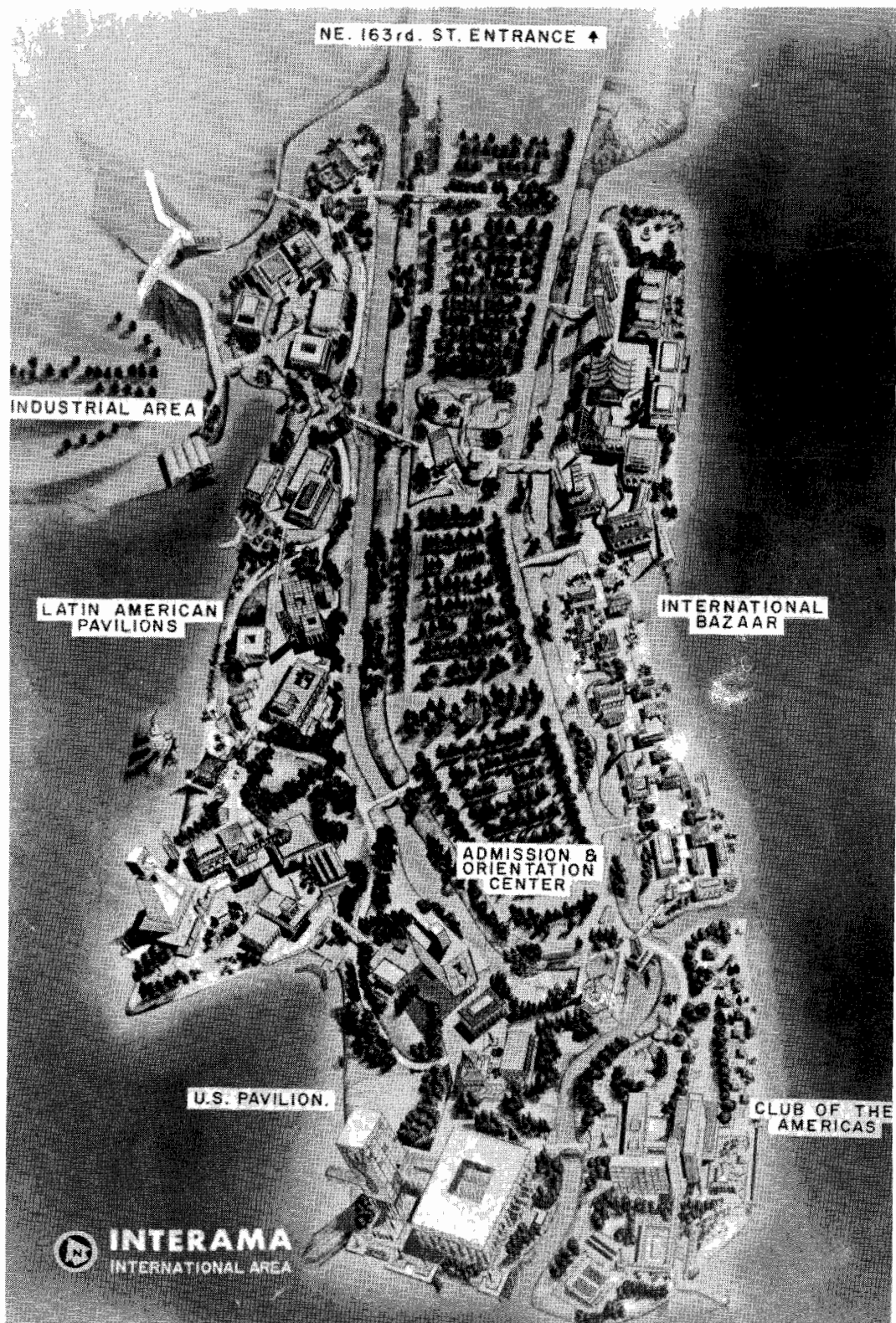
In addition to INTERAMA'S gourmet restaurants, representing the nations of the hemisphere, Metropolitan Miami has more than four thousand eating places.

38. WHERE ARE INTERAMA'S HEADQUARTERS LOCATED?

Until its Administration Building is completed on the INTERAMA grounds, INTERAMA headquarters is located in the Terminal Building, Miami International Airport, Miami, Florida.



INTERAMA - Site plan shows location of the four principal areas on INTERAMA'S 680 acres. Shown are the International Area, the Industrial Area, the Cultural Area and the Festival Area. Three entrances from the north, south and west will provide access to INTERAMA. There will also be a marine entrance for boats entering the lagoon from Biscayne Bay between the Cultural and International Areas.

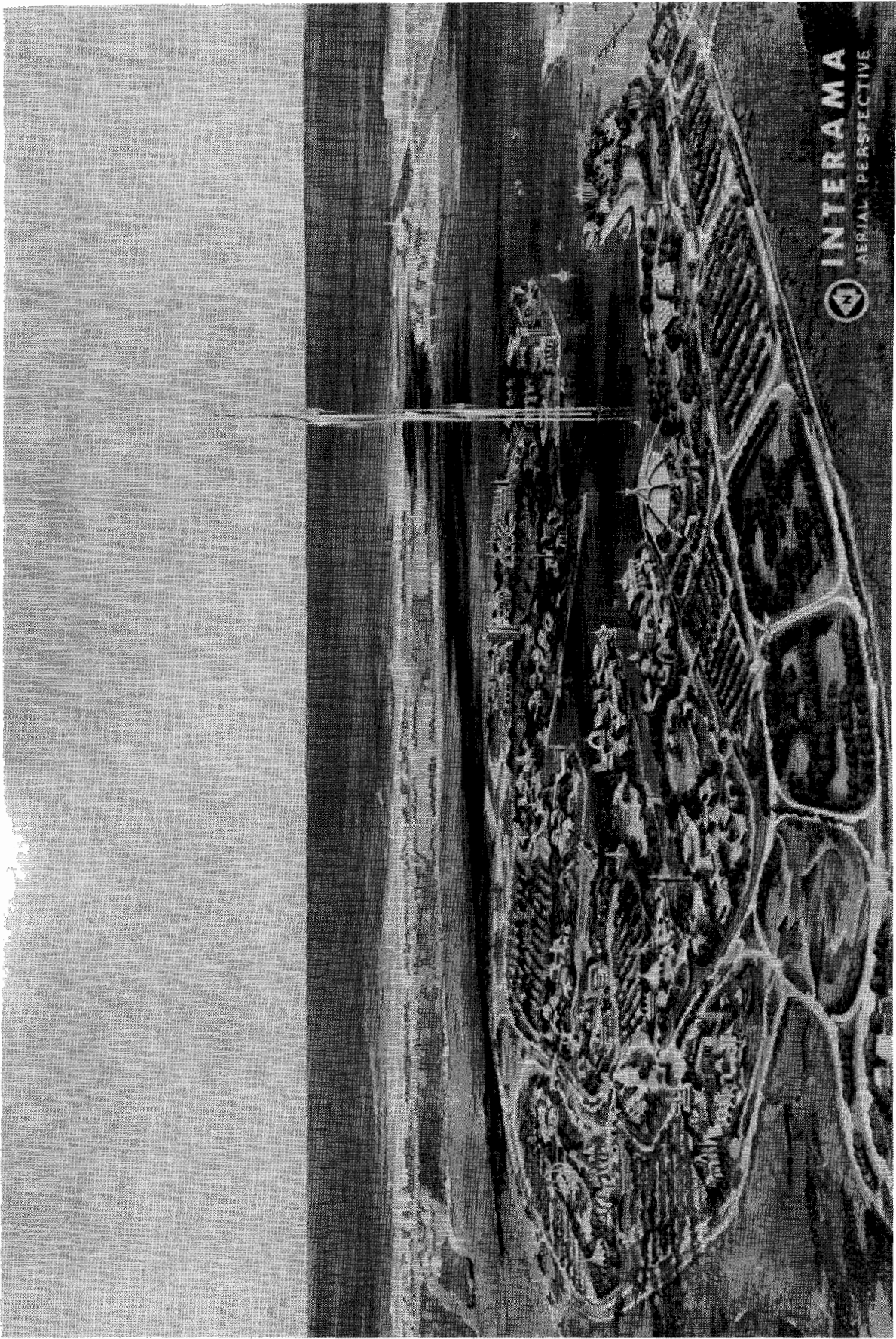


THE INTERNATIONAL AREA - One of INTERAMA'S four principal areas. The pavilions of Latin American nations as well as other countries will be built in the International Area. The Federal Exhibit, the International Bazaar and the Club of the Americas will be located in this area.

In addition to the International Area, INTERAMA will have an Industrial Area, a Cultural and a Festival Area.



Aerial view of INTERAMA'S location in the heart of Greater Miami showing progress of construction made on INTERAMA'S site.



INTERAMA FROM THE AIR - Artist's conception shows the huge 680-acre project on Biscayne Bay, Miami, Florida. Tall structure in center of the lagoon is INTERAMA'S 1,000-foot Freedom Tower. Body of water in background is the Atlantic Ocean.