

The Sermons from Science Pavilion houses a 600-seat theater where Moody science films are shown hourly, plus scientific demonstrations.

Moody Science Films at the Fair

WITHIN the Sermons from Science Pavilion, a 600-seat theater is offering 30 different half-hour programs. These include the well-known Moody science films, such as the award-winning *City of Bees* and *Red River of Life*. Lectures and science demonstrations alternate on the program.

Show's basis theme is the relation of basic laws for science and religion. Narration can be heard

in 13 different languages via earphones and a dial system.

Projection is by a specially-modified Graflex 800 16mm unit linked by a synchronous drive to a Stencil-Hoffman playback with five sound heads. Thus, while optical sound is fed to speakers in the theater, earphones receive translations (five versions at a time) from the tape playback linked to dials at special seats. •

Billy Graham in 70mm Todd-AO

BILLY GRAHAM'S Pavilion is a showcase for the noted evangelist's 70mm Todd-AO motion picture, *Man in the 5th Dimension*, showing daily "on the hour."

Rev. Graham's prologue notes: "You are about to embark on a breathtaking journey through the four-dimensional world of space and time, into the realm of the fifth dimension, the dimension of the spirit . . ."

Scenes taken at Mount Palomar

show our own galaxy and the galactic systems millions of light years away. The story of creation is told in the setting of the Earth's "oldest living things," the giant redwoods of California. Billy Graham demonstrates the continuity of Christian witness down through ancient and modern times to the present day.

An imported 70mm projection system is used to beam Todd-AO images to a wrap-around screen. •

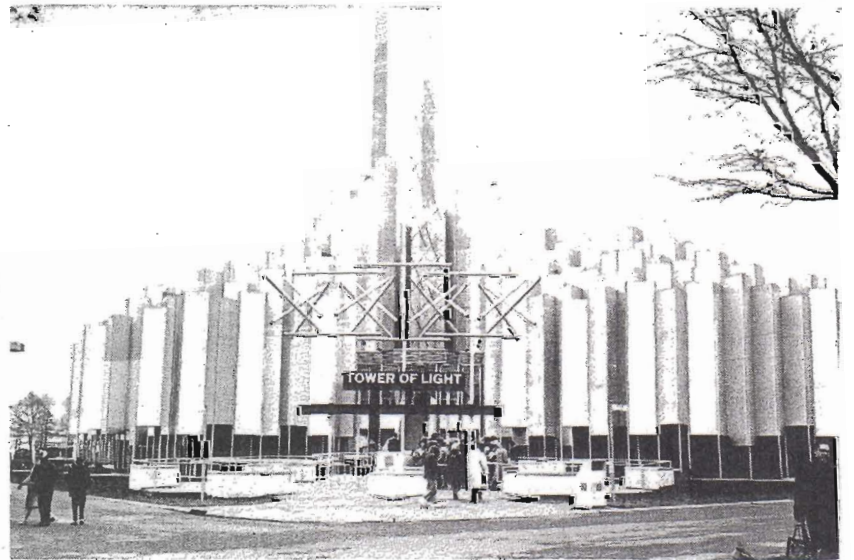


THE TOWER OF LIGHT SHOW

an automated story of electric power & light

INTEGRATED FOUR-MINUTE FILM images provide interesting accents to the fully automated show at the Electric Power & Light Exhibit's Tower of Light, where five motion picture projection systems, designed and engineered by Reevesound, are in operation. Each system includes one 35mm Norel-

virtually instantaneous changeover in the event of burnout, giving the system a "continuous running" capability that is further enhanced through the use of Reevesound-designed 35mm continuous film loops. Fifty-watt Fairchild power amplifiers are used with the system. •

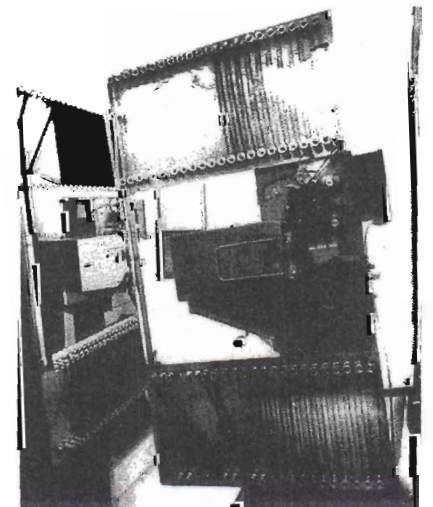


co Pulsed-Lite projector, with start-stop operation triggered by stop cues that are reflective patches on the film.

Norelco Pulsed-Lite lamps used on the projectors permit great flexibility in system design and operation. The light sources are water-cooled short-arc mercury tubes pulsed 72 times per second by a synchronizing signal from the film advance mechanism of the projector.

The water-cooled mercury tubes make it unnecessary to vent the lamps to the outside. They are mounted in pairs within the lamp-house water jacket with automatic,

Below: the Tower of Light show combines film scenes (at right) with this animated light bulb.



Above: 35mm Norelco Pulsed-Lite projector for Tower of Light is modified for cued, start-stop operation of integrated show.

