

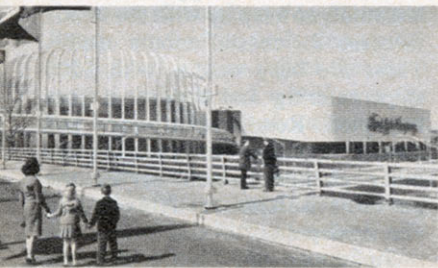


Family group enjoys panoramic view from the Magic Skyway

Bird's-Eye View of the World's Fair

Ford's "track in the sky" provides an incomparable look at the Fair . . . from glamorous convertibles

Ford Wonder Rotunda at the Fair



FOR A SPECTACULAR view of the New York World's Fair, there's nothing better than a ride on Walt Disney's Magic Skyway at the Ford Wonder Rotunda. Comfortably seated in Ford-built cars, you travel around the circumference of the huge Rotunda building, viewing the panorama of the fairgrounds.

This is followed by a journey into the prehistoric past when volcanoes ripped the earth, great dinosaurs roamed the marshes, and mankind had his first crude beginnings. From there you travel forward into a Space City that gives you a glimpse of tomorrow. The Magic Skyway ride, in gleaming convertibles, represents the first time in the history of exhibits that people have been transported through a display by automobile. ■