

MARINAS OF THE FUTURE, INC.  
NORTHERN BLVD., CORONA 68, N. Y.  
EXECUTIVE OFFICE: TWining 8-1212  
MARINA OFFICE: TWining 8-6300

# World's Fair Marina

The world's largest floating Marina -- 240 acres of land and sea on the panoramic New York World's Fair site. Here, discriminating skippers of every size craft ... canoe ... yacht ... or excursion boat will find luxurious service, ultra-modern facilities and gracious hospitality.

Conveniently located in Flushing Bay (an arm of the East River), the Marina puts you within easy reach of the Fair via the Atlantic Intra-coastal Waterway, the Hudson River and the New York State Barge Canal.

This multi-million dollar Marina will be the largest on the Eastern seaboard, accommodating 1,000 boats -- 675 at berths and 325 more at moorings (plus parking facilities for over 2,000 cars).

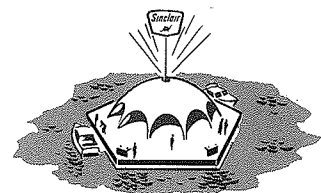
The modernistic, space-age design features a network of interconnecting fingerpiers floating from center islands constructed of brightly colored Fiberglas.

A PLEASURE PLAYGROUND ... auto and boat rentals, excursion boat service, TV rentals, luxurious restaurant and cocktail lounge, vending machines dispensing everything from ice cubes to a quick-frozen dinner ... FULL-RANGE BOATING SERVICES ... marine supply and sales, storage for your

**CRUISE WITH CARE**



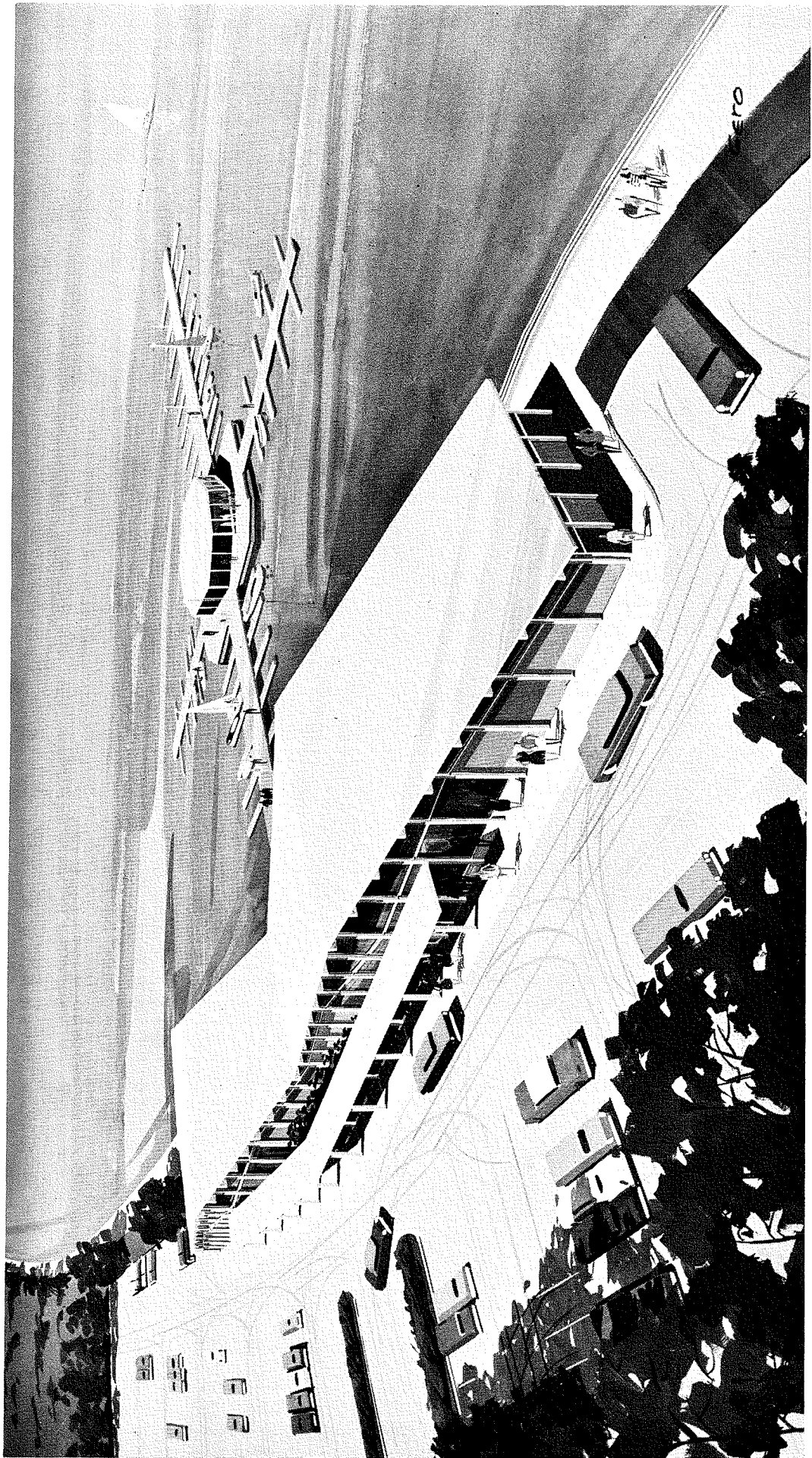
**AND BUY *Sinclair***



gear, marine service station, electronic sales and service ... THE LAST WORD IN COMFORT ... fabulous yacht hotels, showers, dressing rooms, laundromat, lavatories, etc.

Lighting from within the translucent Fiberglas satellite centers turn the entire Marina into a glitter of color and lights your way at night.

The new Met Stadium might be a long throw, but is just a short walk from the WORLD'S FAIR MARINA. Fans can now cruise to the Stadium and watch their team win that game!



**Johnson MOTORS**

WAUKEGAN, ILLINOIS 60086



**NEWS BUREAU**

for release on receipt

SPECIFICATIONS, PRICES FOR JOHNSON SEASPORT

NAME: Johnson Seasport (Inboard Outboard) COLOR: White hull with beige deck  
" " " blue "  
" " " green "

LENGTH: 17' (extreme overall: 17' 2 5/8") BEAM: 7' 4"

WEIGHT: 1500 lbs with 88 hp. engine  
1728 lbs. with 110 hp. engine  
1860 lbs. with 150 hp. engine

CAPACITY: 1800 lbs. FREEBOARD: 27" COCKPIT LENGTH: 167" COCKPIT AREA: 71.2 sq. ft.

CONSTRUCTION: Bonded fiberglass laminate; permanently bonded deck and hull.  
Molded-in permanent flotation in sealed double bottom.

STANDARD EQUIPMENT: One of three stern drive power options. "Electramatic" single-motion throttle and shift control. Key switch electric starting. Power tilt lower unit. Battery and battery box. Steering wheel and cable control. Electric engine compartment blower and bilge pump. Instrument group: rudder indicator, speedometer, tachometer, ammeter, fuel gauge, heat warning light, oil level and pressure warning light. Two 18-gallon gasoline tanks. Two-gallon oil tank (for 88 hp., 2-cycle model). Driver's windshield. Running lights. Anchor light. Interior courtesy light. Instrument lights. Electric horn and cigarette lighter. USCG-approved dry charge fire extinguisher. Two deluxe shock-absorbing seats with USCG-approved life preserver cushions. Six storage lockers (two with locks). Two 8' storage compartments. Deck hardware includes four chrome cleats, two lifting eyes, trailer bow eye and bow chock. Bow gunwale stanchions and safety railing. Tool kit. Boat drain. Driver's foot rest. One floor mat.

PRICES: \$3,200.00 (88 hp. two cycle engine)

\$3,450.00 (110 hp. four cycle engine)

\$3,800.00 (150 hp. four cycle engine)

(Suggested list prices, F.O.B. Waukegan, Illinois. Transportation and state and local taxes extra.)