

Montana

CENTENNIAL TRAIN

and
**WORLD'S
FAIR
EXHIBIT**



50¢





-back in '94

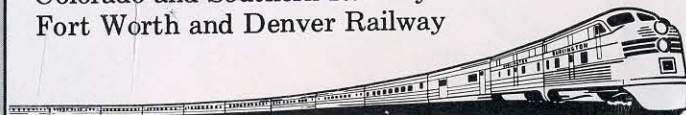
...when Montana was a young, lusty 30 years of age, this brand became a "working" partner with the state. Since that day in 1894, the Burlington Railroad and Montana have worked together and progressed together.

On this, the state's 100th Anniversary, the Burlington extends its best wishes and its assurance of continued cooperation with this great western empire in the years to come.

BURLINGTON LINES



Chicago, Burlington & Quincy Railroad
Colorado and Southern Railway
Fort Worth and Denver Railway



THE WHO, WHAT AND WHY OF THE MONTANA CENTENNIAL TRAIN

On April 5, 1964, Montana will roll its Centennial Train east with stops at Omaha, Kansas City, St. Louis, Louisville, Cincinnati, Charleston, Washington, Baltimore, Philadelphia, New York, Pittsburgh, Cleveland, Chicago, Milwaukee, Moline and Minneapolis.

Two-Day Stops

Two days are scheduled for each city to be devoted to generating interest and encouraging tourism in the Big Sky Country. A detailed schedule of events for each stop can be found on pages 9 through 24 and on page 30 you will find the schedule for the Montana Day doings at the World's Fair on April 24.

Cowboys and Indians

There will be 300 gregarious, happy, fun loving Montanans aboard the train. Cowboys, cowgirls, Indians, musicians, mule skinnors, Miss Montana Centennial, Governor Babcock and other state officials will all be aboard. There will also be 72 horses, a chuck wagon, a conestoga wagon and other vehicles of ancient vintage, all of which will be paraded and pulled by teams as depicted on pages 26 and 27. Inside the train there will be exhibits of Montana's priceless heritage — Russell and Remington art, a \$1,000,000 collection of gold, relics relating to the Custer Battle, to Calamity Jane, the vigilantes, cowboys and Indians and trophies of Montana big game, as illustrated on pages 25, 28 and 29.

This booklet can only lightly touch on the sights to be seen and the fun to be had aboard, so come on down to the depot and see for yourself.

HOWARD T. KELSEY, *Director*
Montana Centennial Train



HOWARD T. KELSEY
Director
Montana Centennial Train



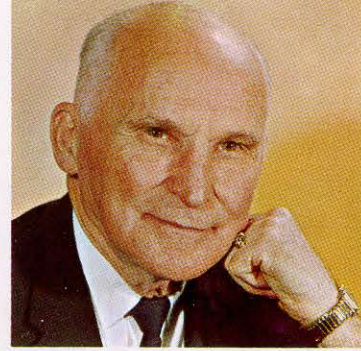
JACK M. HUME
Assistant Director
Montana Centennial Train



OTT R. TSCHACHE
Manager
Montana World's Fair

GREETINGS

FROM **TIM BABCOCK**
GOVERNOR OF **MONTANA**



An Idea That Grew to Fantastic Proportions . . .

It was on a fishing trip at one of the thousands of inspirational spots in Montana that an enthusiastic outdoorsman spoke up and said to his fellow anglers, "We should tell the world more about Montana. Let's fill a train with boosters and tour the country."

The idea was presented to the Montana Territorial Centennial Commission by Howard Kelsey, owner of the Nine Quarter Circle Ranch, and he was promptly named chairman of the Centennial Train Committee. The concept as viewed at first was quite modest but under Kelsey's leadership things began to happen. First, he gained a valuable assistant, Jack Hume.

Kelsey noted that the train's journey east coincided with the opening of the New York World's Fair. After some inquiries, he garnered permission to park the train at the Fair for a three day stay. The train idea fascinated General William E. Potter, Executive Vice President of the Fair, who suggested the Train stay for the two years the Fair is to run. Robert Moses, President of the Fair, concurred and Kelsey set about to make this a reality. Fair officials made available a site with a 350 foot frontage to which was later added an additional 240 feet or the equivalent of two city blocks.

The Train grew from 10 to 25 cars. More cities were added to the itinerary. There was money to raise, problems to solve and regulations to comply with and they had to buy a train. The latter was purchased from the state of West Virginia who had equipped their Centennial Train for travel throughout that State during its Centennial year. From West Virginia Kelsey borrowed Bill Bolden, the Centennial Trainmaster there, to oversee re-fitting of the Train.

To decorate the Train exterior, two fine artists were acquired, Lyman Rice and Bud Wert. The interiors were given to Bob Morgan of the Montana Historical Society to prepare displays. Material for the displays was loaned through Mike Kennedy, Director of the Montana Historical Society. Ott Tschache was added to the staff to manage the Montana exhibit during its stay at the Fair and Bill Briscoe joined the group as an Administrative Assistant. These men were seized with the infectious fervor of Kelsey and Hume and the details and loose ends began to fall into place.

Cooperation was received by many State and Federal agencies as well as privately owned enterprises, all of whom realized the potential to their own organizations. Individuals, far too many to mention even fleetingly here, pitched in to bring the enterprise to fruition. The result is a collection of significant Montana displays championed by Montanans eager to tell about them in the hope that they will attract visitors to the Treasure State. Nor does this dream end in New York. Kelsey is examining an invitation to send a portion of the Train to Europe.

I hope that you can visit the train and meet with Howard Kelsey and Jack Hume and the 300 other friendly Montanans who are actors in this drama.

L. W. UPSHAW, *Chairman*
Montana Centennial Commission



TIM BABCOCK
GOVERNOR

State of Montana
Office of The Governor
Helena

GREETINGS:

One hundred years ago, under Abraham Lincoln, what is now the State of Montana became a territory. We Montanans are celebrating that birthday this year, and as part of our celebration we are sending our Centennial Train through as many states as possible. When our train reaches your area, we would like for you to be our special guests.

Aboard the train you will find exhibits that trace Treasure State history from Lewis and Clark to the missile sites of today. There will be relics of the Custer Battle, a fabulous collection of gold nuggets and dust, exhibits depicting the part played by the Vigilantes in bringing law to the frontier, and art works by Russell Remington and other fine artists. There are other exhibits too, that show Montana past and present. In this manner we can share our heritage with you.

Along with our displays, we will have parades (our horses will be along too), luncheons and good social times together. There will be 300 Montanans aboard to host you and perhaps boast a little about Montana.

Among the following pages you will find a schedule of the stops our Centennial Train will make. We hope you will set aside a day when we are in your area. I will join the train from time to time, and I hope that I can meet you along with any friends you may choose to bring.

See you then.

Sincerely yours,

Tim Babcock
Tim Babcock, Governor
State of Montana

MONTANA CENTENNIAL TRAIN AND WORLD'S FAIR COMMITTEE

Box 1964 — Bozeman, Montana

Honorable Tim Babcock, Governor, Ex Officio Member

STAFF MEMBERS (TRAIN WHEELS)

- *Howard T. Kelsey, Director — Owner-Operator Nine Quarter Circle Ranch, Gallatin Gateway, Montana
- Jack M. Hume, Assistant Director — Former Owner-Operator Lone Mountain Ranch Gallatin Gateway, Montana
- Ott R. Tschache, Mgr., Mont. World's Fair — Businessman and Civic Leader, Bozeman Montana
- Wm. B. "Bill" Briscoe, Administrative Ass't. — Former Sales Mgr., Yellowstone Park Co., Bozeman, Montana

COMMITTEE MEMBERS

- *Miss Norma Beatty, Originator TV Show—Montana Today, Great Falls
- Tom Collins, Former Director State Planning Board, Missoula
- John Collins, Vice President, 1st National Bank, Missoula
- Gene Coombs, Vice President and Public Relations, Security Bank, Billings
- *Lyle Downing, Associated Press, Helena
- *Chet Dreher, Photographer and Special Events, Montana Highway Commission, Helena
- Frank Dunkle, Director, Montana Fish and Game Dept., Helena
- Lochiel "Shingles" Edwards, State Senator, Phillips County, Malta
- Howard Ellsworth, Montana Ambassador of Good Will, Helena
- Orvin Fjare, Former U. S. Congressman, Director State Advertising Dept., Helena
- Pat Goodover, Civic Leader, Owner Radio Station KARR, Great Falls
- *Dale Hawkins, Civic Leader, Real Estate Broker, Billings
- Helen Johnson, Former State Representative, Gallatin County, Bozeman
- Ed Kellner, Mgr., Montana Chamber of Commerce, Helena
- *Michael Kennedy, Director Historical Society of Montana, Helena
- Don King, Superintendent, Northern Pacific Railway Co., Missoula
- Curt Lees, Former Secretary Montana Motel-Hotel Ass'n., Billings
- Jim Lucas, State Representative, Custer County, Miles City
- *Ted Mannix, State Representative, Powell County, Deer Lodge
- O. E. Markle, Past President, Montana Chamber of Commerce, Glasgow
- Walter C. Nye, Past Executive Sec'y., Dude Ranchers Ass'n., Billings
- Russ Porten, Owner-Operator, Hammil Courts, Miles City
- C. B. Rich, Owner-Operator, Double Arrow Ranch, Seeley Lake
- George Sime, Public Relations Director, Montana Highway Commission, Helena
- Guy Sperry, Mgr., Bozeman Chamber of Commerce, Bozeman
- Dorris Stalker, Ass't. Advertising Director, State Advertising Dept., Helena
- *L. W. Upshaw, Chairman, Montana Centennial Commission, Helena
- Joe Wantulok, Mgr., Safeway Store, Bozeman

SPECIAL COMMITTEES

- Knute Bergan, Commissioner Indian Affairs, Helena
- Sam Chapman, Director State Planning Board (Ch. Printed Booklet), Helena
- Ken Guyse and William S. Bolden, In Charge Mechanical and Electricals, Billings
- Blanche Judge, Charge Miss Montana Centennial, Helena
- Tom Judge, Director Special Events, Helena
- Major General Dick Kendall, Adjutant General, Charge of Security, Deer Lodge
- Robert F. Morgan, Curator, Montana Historical Society (Exhibit Cars), Helena
- Gene Quaw, Charge Music Committee, Bozeman
- Lyman Rice, Artist, Charge of Artwork Panels Centennial Train, Billings
- H. S. "Big Steve" Stevenson, Parade Master, Bozeman
- *Members of Montana Territorial Centennial Commission

It Takes All Kinds of Montanans . . .



A hundred golden years ago, people were moving west to what was then Montana Territory. "Westward Ho" was the cry. Now it's "Eastward Ho" for 300 Montanans riding in a 25 car iron horse train, with real horses luxuriating in parlor cars.

When the Centennial Train idea was first spawned back in May of 1961, it took a lot of doin' to sell such a wild idea. As the story was re-told it began to firm its roots and with the strong support of the late Governor Donald G. Nutter and later Governor Tim Babcock, Tom Collins, Director of the State Planning Board, L. W. "Uppy" Upshaw, Chairman of the Centennial Commission and William F. "Bill" Burke of Burlington Railway Company, it got off to a rattlin' good start. Other Montanans have contributed a heap to this promotion since it got up a head of steam. What started out as a one man show, has involved literally thousands who have contributed time and money to show their love, loyalty and respect for this BROAD, BUXOM, BIG SKY COUNTRY. Montana has been good to its people in a friendly sort of way — this is the prime mover that rolled the wheels.

On board our train will be 300 Montana boosters, 72 head of horses, Indians, musicians, entertainers, cowboys and cowgirls, Miss Montana Centennial, the Governor and other state officials. Businessmen, bankers, farmers, ranchers, miners and statesmen all rushed forward to join hands with teachers, secretaries, artists, doctors and veterinarians to make their reservations for this 30 day trip. Dude ranchers, outfitters and livestock people pledged their horses and gear for riding stock and teams for the wagons. Chambers of Commerce from 30 different cities have put representatives aboard. This Montana home on wheels shows great promise of developing the State's abundant human and natural resources.

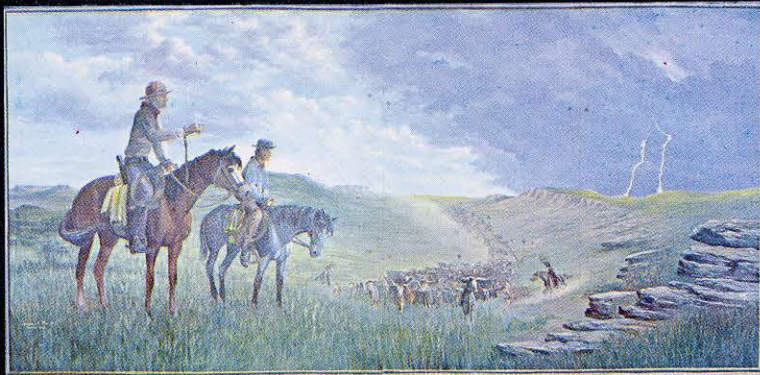
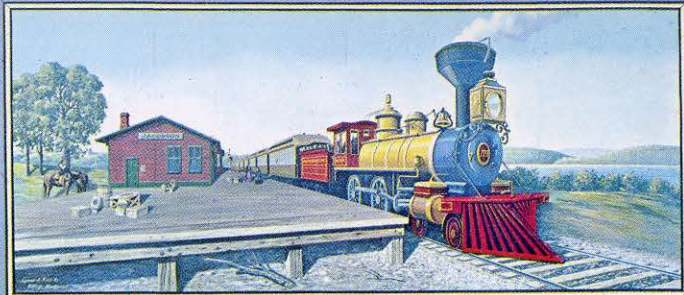
We'll hope to be seeing you along the trail.

Sincerely,

HOWARD T. KELSEY, Director
Montana Centennial Train
and World's Fair Exhibit



Artists Lyman Rice and Bud Wert have produced massive murals on the train sides from Montana, past and present. While they dignify Montana, they also impart a gala mood reminiscent of the old circus train. Most of the murals measure eight by sixteen feet.



1st STOP: OMAHA –

BURLINGTON STATION

Arrival: Monday, April 6, 6:00 a.m.

Departure: Tuesday, April 7, 11:59 p.m.



Monday, April 6

Breakfast: 6:00 to 8:00 a.m., Grier House, Burlington Station and Hayden House, Union Station.

Parade: 9:45 to 11:15 a.m.

Assembly point: 10th and Mason, Burlington Station.

Route of march: North on 10th to Farnam, West on Farnam to 18th, South on 18th to Harney, East on Harney to 10th, South on 10th to Burlington Station.

Exhibit car display: 10:00 a.m. to 10:00 p.m., Burlington Station.

Private showing for Omaha officials concurrent with parade time.

Indian Street Dances: Courthouse lawn following parade.

Luncheon: 12:00 noon to 1:30 p.m., Paxton Hotel, 14th and Farnam Sts. Arrangements being made by the "Tribe of Yessir".

Movies: During afternoon at Paxton Hotel.

Banquet: 6:30 to 8:00 p.m., Sheraton-Fontenelle Hotel, 1806 Douglas Street. (In honor of Governor Frank B. Morrison.)

Entertainment: Montana Talent (Immediately following banquet).

Tuesday, April 7

Breakfast: 7:30 to 9:30 a.m., Grier House and Hayden House.

Exhibit car display: 10:00 a.m. to 10:00 p.m., Burlington Station.

Lunch: 2:00 to 3:30 p.m., Grier House and Hayden House.

Movies: During afternoon at Paxton Hotel.

Dinner: 7:30 to 9:00 p.m., Grier House and Hayden House.

Departure: 11:59 p.m.

Location of train: Burlington Station.

4th STOP: LOUISVILLE –

UNION STATION

Arrival: Sunday, April 12, 7:00 a.m.

Departure: Monday, April 13, 11:59 p.m.



Sunday, April 12

Breakfast: 7:00 to 9:00 a.m., Restaurant at Union Station.

Exhibit car display: 10:00 a.m. to 10:00 p.m., Union Station.

Lunch: 12:00 noon to 2:00 p.m., Brown Hotel, Broadway at Fourth Ave.

Bus Tour: 2:00 to 5:00 p.m., Sponsored by local Chamber of Commerce.

Movies: 2:00 to 5:00 p.m., Brown Hotel.

Dinner: 5:30 to 7:00 p.m., Brown Hotel.

Monday, April 13

Breakfast: 6:00 to 8:30 a.m., Restaurant at Union Station.

Parade: 9:30 to 11:00 a.m.

Assembly point: 10th and 11th Streets on Broadway.

Route of march: East on Broadway to 4th Street, North on 4th St. to River Road where it will disband.

Exhibit car display: 10:00 a.m. to 10:00 p.m., Union Station.

Private showing for Louisville officials concurrent with parade time.

Indian Street Dances: During parade. (Possible other location.)

Luncheon: 12:00 to 1:30 p.m., Brown Hotel, this is the kick-off of the annual meeting of the Kentucky Chamber of Commerce. Governor Babcock will be the featured speaker. Tour members are cordially invited to attend this luncheon. Special luncheon tickets are available for members of the Centennial Train.

Movies: 2:00 to 5:00 p.m., Brown Hotel.

Banquet: 6:30 to 8:00 p.m., Kentucky Hotel.

(In honor of Governor Edward T. Breathitt.)

Entertainment: Montana Talent (Immediately following banquet).

Departure: 11:59 p.m.

Location of train: All cars located at street level in Union Station open to Broadway. Horses located at Maple Street Siding in back of train. Passenger train is in Union Station coach yard facing Broadway.

5th STOP: CINCINNATI –

UNION TERMINAL STATION

Arrival: Tuesday, April 14, 4:30 a.m.

Departure: Wednesday, April 15, 8:00 a.m.



Tuesday, April 14

Breakfast: 6:00 to 8:30 a.m., Restaurant at Union Terminal.

Parade: 9:45 to 11:15 a.m.

Assembly point: In front of Union Terminal.

Route of march: Proceed over Lincoln Park Drive to Central Parkway, North to 14th Street, to Race, to Fifth Street, to Main, to Central Parkway and disband.

Exhibit car display: 10:00 a.m. to 10:00 p.m., Union Terminal.

Private showing for Cincinnati officials concurrent with parade time.

Indian Street Dances: Esplanade of the Hamilton County Courthouse following parade.

Luncheon: 12:00 noon to 1:30 p.m., Sheraton-Gibson Hotel, Fifth and Walnut Streets.

Movies: Concurrent with exhibit car display. Concourse level in the rotunda (front section of station).

Banquet: 6:30 to 8:00 p.m., Sheraton-Gibson Hotel. (In honor of Governor James A. Rhodes.)

Entertainment: Montana Talent (Immediately following banquet).

Wednesday, April 15

Breakfast: 6:00 to 7:45 a.m., Restaurant at Union Terminal.

Departure: 8:00 a.m.

Location of train: Arrive at Union Terminal on Track 8. Fourteen sleeping cars will be placed for occupancy on Track 1. Three horse parlor cars will be placed on Station Track NP for display, thence to Track 223 at the Mail and Express Sector for unloading. Three baggage exhibit cars will be placed on Station Track PS. The standby power and utility car, the lounge car, and State official car will be placed on Station Track 18. (Station Tracks 1, PN, PS, and 18 are adjacent to one another.)

6th STOP: CHARLESTON—

STATION

Arrival: Wednesday, April 15, 12:00 noon.

Departure: Wednesday, April 15, 10:00 p.m.



Wednesday, April 15

Lunch: 12:00 noon to 1:00 p.m., Picnic-style box lunch will be put on train by Charleston people. Montana officials will attend a luncheon in the Capital Building with Governor W. W. Barron as their host.

Parade: 2:00 p.m. to 4:00 p.m.

Assembly point: Broad and Smith.

Route of march: South to Kanawha Blvd. on Broad, West to Capital Street, North on Capital to Washington, East on Washington to Broad, North on Broad returning to assembly point.

Exhibit car display: 1:00 p.m. to 10:00 p.m., K & M Station.

Indian Street Dances: Capital Street and Quarrier.

Movies: None.

Banquet: Charleston Civic Center, 7:00 p.m. to 9:30 p.m. (In honor of Governor W. W. Barron).

Entertainment: Montana Talent (Immediately following banquet at Charleston Civic Center).

Departure: 10:00 p.m.

Location of train: Station.

7th STOP: WASHINGTON, D. C.

UNION STATION

Arrival: Thursday, April 16, 10:00 a.m.

Departure: Saturday, April 18, 2:00 a.m.



Thursday, April 16

Breakfast: Sweet rolls and coffee will be served on the train between Charleston and Washington.

Lunch: 11:00 to 12:30 p.m., Savarin Restaurant, Union Station.

Parade: 1:30 to 3:30 p.m.

Assembly point: Union Station.

Route of march: Proceed from Union Station by way of Delaware Avenue to Capital Plaza, to Independence Avenue, right on Independence Avenue to First Street, right on First Street to Pennsylvania Avenue, to White House on Executive Avenue, pass White House, right on Pennsylvania Avenue to rejoin 15th Street, left on 15th Street to "K" Street, right on "K" Street to where it intercepts Massachusetts Avenue, thence down Massachusetts Avenue to point of origin.

Exhibit car display: 1:30 to 10:00 p.m., Union Station. Private showing for Washington officials concurrent with parade time.

Indian Street Dances: 3:30 to 4:30 p.m., Pershing Square.

Movies: Time and location to be announced.

Dinner: 5:00 to 6:30 p.m., Savarin Restaurant, Union Station.

Friday, April 17

Breakfast: 6:00 to 8:00 a.m., Savarin Restaurant, Union Station.

Exhibit car display: 10:00 a.m. to 10:00 p.m., Union Station.

Lunch: 11:00 to 12:30 p.m., Savarin Restaurant, Union Station.

Movies: Time and location to be announced.

Banquet: 6:30 to 8:00 p.m., Sheraton-Park Hotel, 2660 Woodley Road, N.W. (In honor of President Lyndon B. Johnson, and Senators and Congressmen from Montana. NBC News Commentators, Chet Huntley and David Brinkley, will be Toastmaster and Master of Ceremonies respectively.)

Entertainment: Montana Talent (Immediately following banquet).

Saturday, April 18

Departure: 2:00 a.m.

Location of train: Union Station.

8th STOP: BALTIMORE –

CAMDEN STATION

Arrival: Saturday, April 18, 6:30 a.m.

Departure: Sunday, April 19, 11:59 p.m.



Saturday, April 18

Breakfast: 6:30 to 8:30 a.m. — Southern Hotel.

Parade: 9:45 to 11:15 a.m.

Assembly point: Camden Station.

Route of march: North to Pratt Street, thence West on Pratt Street to Eutaw Street, thence North on Eutaw Street to Center Street, thence East on Center Street to Howard Street, thence South on Howard Street to Camden Station.

Exhibit car display: 10:00 a.m. to 10:00 p.m., Camden Station (Track 3).
Private showing for Baltimore officials concurrent with parade time.

Indian Street Dances: During parade.

Luncheon: 12:00 noon to 1:30 p.m., Southern Hotel.

Movies: Time and location to be announced.

Banquet: 6:30 to 8:00 p.m., Southern Hotel (In honor of Governor Millard Tawes).

Entertainment: Montana Talent (Immediately following banquet).

Sunday, April 19

Breakfast: 7:30 to 9:00 a.m., Southern Hotel.

Exhibit car display: 10:00 a.m. to 10:00 p.m., Camden Station (Track 3).

Lunch: 12:15 to 1:30 p.m., Southern Hotel.

Movies: Time and location to be announced.

Dinner: 5:30 to 7:00 p.m., Southern Hotel.

Departure: 11:59 p.m.

Location of train: Sleeping and horse parlor cars on Track 2 and 3 adjacent to produce terminal.

9th STOP: PHILADELPHIA –

PENNSYLVANIA STATION

Arrival: Monday, April 20, 6:00 a.m.

Departure: Tuesday, April 21, 11:59 p.m.



Monday, April 20

Breakfast: 6:00 to 8:30 a.m., Savarin Restaurant at station.

Pilgrimage: 9:45 to 11:15 a.m.

Assembly point: Location of horse parlor cars.

Route of march: Chesnut Street to Independence Hall where we will have a flag raising ceremony. Following the ceremony, go North on 5th Street one block, down Market Street to City Hall and North around City Hall to John F. Kennedy Boulevard which will take cavalcade directly to railroad station. Go around station and back to cars.

Exhibit car display: 10:00 a.m. to 10:00 p.m., Pennsylvania Station.
Private showing for Philadelphia officials concurrent with parade time.

Indian Street Dances: Independence Square patio concurrent with flag raising ceremony. On flatbed during parade.

Luncheon: 12:00 noon to 1:30 p.m., Benjamin-Franklin Hotel, Chesnut Street at Ninth.

Movies: Concurrent with exhibit car display. Location: Platform between cars at Pennsylvania Station.

Banquet: 6:30 to 8:00 p.m., Benjamin-Franklin Hotel, Chestnut Street at Ninth. (In honor of Governor William W. Scranton.)

Entertainment: Montana Talent (Immediately following banquet).

Tuesday, April 21

Breakfast: 6:00 to 8:30 a.m., Savarin Restaurant at Station.

Exhibit car display: 10:00 a.m. to 10:00 p.m., Pennsylvania Station.

Lunch: 12:00 noon to 1:30 p.m., Savarin Restaurant at Station.

Movies: Concurrent with exhibit car display. Location: Platform between cars at Pennsylvania Station.

Dinner: 5:30 to 7:00 p.m., Savarin Restaurant at Station.

Departure: 11:59 p.m.

Location of train: Horse parlor cars and power utility car will be parked in Allison Yard, 31st and Walnut Streets (2½ blocks from station). Sleeping and exhibit cars on Track 1 and 2 in 30th St. Station (Penn. Station). Direct visitors or passengers to stairway No. 2.

10th STOP: NEW YORK CITY –

PENNSYLVANIA STATION

Arrival: Wednesday, April 22, 7:00 a.m.

Departure: Friday, April 24, 10:30 p.m.



Wednesday, April 22

“United States Day” at New York World’s Fair.

Breakfast: 7:00 to 9:00 a.m., Commodore Hotel, 42nd Street at Lexington Avenue.

Parade: 9:45 to 11:15 a.m.

Assembly point: Montana exhibit site between 7:30 and 9:30 a.m.

Route of march: Proceed East to New York World’s Fair assembly area in the vicinity of the Mormon Temple. Parade will commence on eastern extreme perimeter of Fair grounds and proceed as established by N. Y. World’s Fair officials to the United States Building.

Exhibit car display: 10:00 a.m. to 10:00 p.m. at the Montana exhibit site. Private showing for New York City and World’s Fair officials concurrent with parade time.

Lunch: (No Host) Personnel will be site-seeing and touring World’s Fair.

Dinner: (No Host).

Thursday, April 23

“New York State Day” at New York World’s Fair.

Breakfast: 7:00 to 9:00 a.m., Commodore Hotel.

Exhibit car display: 10:00 a.m. to 10:00 p.m., Montana exhibit site.

Lunch: (No Host).

Banquet: 6:30 to 8:00 p.m., Commodore Hotel. (In honor of Governor Nelson B. Rockefeller, NBC News Commentator, Chet Huntley and Governor Tim Babcock of Montana).

Entertainment: Montana Talent (Immediately following banquet).

Friday, April 24

“Montana Day” at the New York World’s Fair.

Breakfast: 7:00 to 9:00 a.m., Commodore Hotel.

See Page 30 for schedule of “Montana Day” activities

Dinner: (No Host).

Departure: 10:30 p.m.

Location of train: Display cars, horse parlor cars, power utility car, and vehicle car will be located at Montana exhibit site at World’s Fair.

NOTE: Guestrooms have been reserved for train personnel at the Commodore Hotel on April 22 and 23. Pullman cars will not be used.

11th STOP: PITTSBURGH –

PENNSYLVANIA STATION

Arrival: Saturday, April 25, 6:00 a.m.

Departure: Sunday, April 26, 11:59 p.m.



Saturday, April 25

Breakfast: 6:00 to 8:30 a.m., Greyhound Post House, 219 Eleventh St., (across from station).

Parade: 9:45 to 11:15 a.m.

Assembly point: Pennsylvania Station at 11th Street and Liberty Avenue.

Route of march: Liberty to Stanwix Street, one block over to Penn Avenue, then along Commonwealth Ave. to Boulevard of Allies, turn on to Grant St. and return to Railway yard.

Exhibit car display: 10:00 a.m. to 10:00 p.m., Pennsylvania Station. Private showing for Pittsburgh officials concurrent with parade time.

Indian Street Dances: During parade.

Luncheon: 12:00 noon to 1:30 p.m., Penn-Sheraton Hotel, William Penn Place.

Movies: Time and location to be announced.

Banquet: 6:30 to 8:00 p.m., Penn-Sheraton Hotel. (In honor of Governor William W. Scranton.)

Entertainment: Montana Talent (Immediately following banquet).

Sunday, April 26

Breakfast: 6:00 to 8:30 a.m., Greyhound Post House.

Exhibit car display: 10:00 a.m. to 10:00 p.m., Pennsylvania Station.

Lunch: 12:00 noon to 1:30 p.m., Greyhound Post House.

Movies: Time and location to be announced.

Dinner: 5:30 to 7:00 p.m., Greyhound Post House.

Departure: 11:59 p.m.

Location of train: Track No. 1 of Pennsylvania Station. The horses will be located at 23rd Street and the Allegheny Valley Railroad.

12th STOP: CLEVELAND -

UNION STATION

Arrival: Monday, April 27, 6:00 a.m.

Departure: Tuesday, April 28, 8:00 p.m.



Monday, April 27

Breakfast: 6:00 to 8:00 a.m., Harvey House at Station.

Parade: 9:45 to 11:15 a.m.

Assembly point: East 17th St. and Superior Ave.

Route of march: Chester to Euclid, West on Euclid to East Roadway, North on East Roadway to the Mall and disband.

Exhibit car display: 10:00 a.m. to 10:00 p.m., Union Station.

Private showing for Cleveland officials concurrent with parade time.

Indian Street Dances: During parade.

Luncheon: 12:00 noon to 1:30 p.m., Sheraton-Cleveland Hotel, Public Square. Arrangements being made by Sales Executives Club.

Movies: Time and location to be announced.

Banquet: 6:30 to 8:00 p.m., The Pick-Carter, Prospect and East 9th Sts. (In honor of Governor James A. Rhodes.)

Entertainment: Montana Talent (Immediately following banquet).

Tuesday, April 28

Breakfast: 6:00 to 8:00 a.m., Harvey House at Station.

Exhibit car display: 10:00 a.m. to 7:00 p.m., Union Station.

Lunch: 12:00 noon to 1:30 p.m., Harvey House, Union Station.

Movies: Time and location to be announced.

Dinner: 5:30 to 7:00 p.m., Harvey House, Union Station.

Departure: 8:00 p.m.

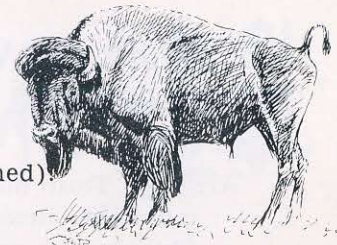
Location of train: Union Station.

13th STOP: CHICAGO -

UNION STATION

Arrival: Wednesday, April 29, 3:00 a.m.

Departure: Friday, May 1, (Time not confirmed)



Wednesday, April 29

Breakfast: 6:00 to 8:30 a.m., Harvey Restaurant at Station.

Parade: 9:45 to 11:15 a.m.

Assembly point: Hubbard and Illinois Streets between State and Clark Streets.

Route of march: Begin on about Kinzie and State Streets, proceed South on West half of State Street to Congress Street, disband between Van Buren and Congress Streets. Cross Congress under police control, disband westbound on Harrison, continue west on Harrison to Clinton and then to Arthington to return to railroad yards.

Exhibit car display: 10:00 a.m. to 10:00 p.m., Union Station.

Private showing for Chicago officials concurrent with parade time.

Indian Street Dances: During Parade.

Luncheon: 12:00 noon to 1:30 p.m., Sheraton-Chicago, 505 North Michigan Avenue. Arrangements being made by Chicago Association of Commerce and Industry.

Movies: Time and location to be announced.

Banquet: 6:30 to 8:00 p.m., Sheraton-Chicago (In honor of Governor Otto Kerner).

Entertainment: Montana Talent (Immediately following banquet).

Thursday, April 30

Breakfast: 6:00 to 8:30 a.m., Harvey Restaurant.

Exhibit car display: 10:00 a.m. to 10:00 p.m., Union Station.

Lunch: 12:00 noon to 1:30 p.m., Harvey House.

Movies: Time and location to be announced.

Dinner: 5:30 to 7:00 p.m., Harvey House, Union Station.

Friday, May 1

Breakfast: 6:00 to 8:30 a.m., Harvey Restaurant.

Depart for Milwaukee immediately following breakfast and return late evening.

Location of train: Horse cars stored at the Taylor Street team track of the C. B. & Q. Railroad. Show cars and personnel cars located on siding at Union Station.

14th STOP: MILWAUKEE -

STATION

Arrival: Train and work crew will arrive on Thursday, April 30 at midnight. Remainder of train personnel will travel by bus from Chicago and arrive in Milwaukee on Friday, May 1 at 9:00 a.m.

Departure: Friday, May 1, 10:00 p.m.

Friday, May 1

Parade: 9:30 to 11:00 a.m.

Assembly point: Milwaukee Road Depot.

Route of march: North on 3rd St. from Milwaukee Road Depot to Wisconsin Ave., East on Wisconsin Ave. to Prospect, North on Prospect to Kilbourn, West on Kilbourn to 7th St., South on 7th St. to Wisconsin, East on Wisconsin to 3rd St., South on 3rd St. to Milwaukee Depot.

Exhibit car display: 10:00 a.m. to 8:00 p.m., Station.
Private showing for Milwaukee officials concurrent with parade time.

Indian Street Dances: During parade.

Luncheon: Time and location to be announced.

Movies: Time and location to be announced.

Banquet: Time and location to be announced.
(In honor of Governor John W. Reynolds.)

Entertainment: Montana Talent (Immediately following banquet.)

Departure: 10:00 p.m.

Location of train: Pullman cars will be left in Chicago. Headend cars, horse parlor cars, exhibit cars, one pullman car (Urbana), power and utility car, and Governor's car will be hooked to a regularly scheduled Milwaukee train and parked in station at Milwaukee.



15th STOP: MOLINE -

20th STREET STATION, C. B. & Q.

Arrival: Saturday, May 2, 6:00 a.m.

Departure: Saturday, May 2, 11:00 p.m.

Saturday, May 2

Breakfast: 7:00 to 8:30 a.m., LeClaire Hotel, 5th Avenue at 19th Street.

Bus transportation: 9:30 a.m. (Parade personnel to be transported by bus from LeClaire Hotel to Rock Island.)

Parade: 9:45 a.m.

Assembly point: C. B. & Q. Station, Rock Island.

Route of march: Proceed down 2nd Avenue, cross Centennial Bridge to Davenport, right to West 2nd Avenue in Davenport, proceed on West 2nd Avenue and turn right on Perry to Prongers.

Lunch: 12:00 noon to 1:15 p.m. (Parade personnel to eat at Prongers and remainder of train personnel to eat at LeClaire Hotel.)

Parade to reassemble: 1:30 p.m.

Route of march: Proceed to Rock Island Arsenal and cross Moline branch of Mississippi River, across 16th Street Bridge to 3rd Avenue and 16th Street (Moline), South on 16th Street across railroad tracks to 4th Avenue, turn right on 4th Avenue and proceed westward to 12th Street, turn left on 12th Street and proceed one block to 5th Avenue, turn left on 5th Avenue and proceed straight East to 20th Street, turn left on 20th Street and proceed for one block to Centennial Train. (Length of entire parade is approximately 5 miles.) Parade to end at 4:00 p.m.

Exhibit car display: 10:00 to 12:00 noon, 20th Street Station.

Indian Street Dances: 4:00 p.m., John Deere parking lot adjacent to 20th Street Burlington Station.

Movies: 10:00 a.m. to 5:00 p.m., LeClaire Theatre (continuous showings).

Dinner: 5:00 p.m., Marandos.

Entertainment: 8:00 to 9:30 p.m., Wharton Field House (Montana Talent).

Departure: 11:00 p.m.

Location of train: Entire train will be parked on trackage next to 20th Street Burlington Station. Exhibit cars to be parked directly in front of Station at Moline. Power Utility Stand-by car to be parked across 19th Street. (Immediately after arrival at Moline, 3 horse parlor cars and vehicle car will be switched to Burlington Station at Rock Island. Cars will be unloaded and rejoined with remainder of train at Moline.)



16th STOP: MINNEAPOLIS –

NORTHERN PACIFIC STATION

Arrival: Sunday, May 3, 7:00 a.m.

Departure: Monday, May 4, 10:00 p.m.



Sunday, May 3

Breakfast: 7:00 to 8:30 a.m., The Pick-Nicollet Hotel (Mocha Room Coffee House), Nicollet at Washington.

Exhibit car display: 10:00 a.m. to 10:00 p.m., Tracks 1 and 2 in the Hennepin Avenue Station. Private showing for Minneapolis officials concurrent with parade time.

Lunch: 12:00 noon to 1:30 p.m., Mocha Room Coffee House.

Movies: During afternoon in Lakeland Room of The Pick-Nicollet.

Dinner: 5:30 p.m. to 7:00 p.m., Mocha Room Coffee House.

Monday, May 4

Breakfast: 6:00 to 8:30 a.m., Mocha Room Coffee House.

Parade: 9:45 to 11:15 a.m.

Assembly point: Minneapolis Auditorium.

Route of march: From Minneapolis Auditorium westward on 13th Street to Nicollet Avenue, down Nicollet Avenue to the Nicollet Avenue Railroad Station.

Exhibit car display: 10:00 a.m. to 9:00 p.m., Tracks 1 and 2 in the Hennepin Avenue Station.

Indian Street Dances: During Parade.

Luncheon: 12:00 noon to 1:30 p.m., Radisson Hotel. Sponsored by the Minneapolis Chamber of Commerce, Minneapolis Aquatennial Association and local businessmen.

Movies: During afternoon in Lakeland Room of the Pick-Nicollet.

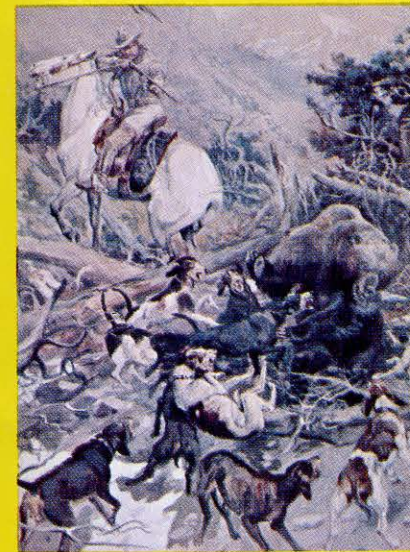
Banquet: 6:30 to 8:00 p.m., The Pick-Nicollet (International Ballroom). In honor of Governor Karl F. Rolvagg.

Entertainment: Montana Talent (Immediately following banquet).

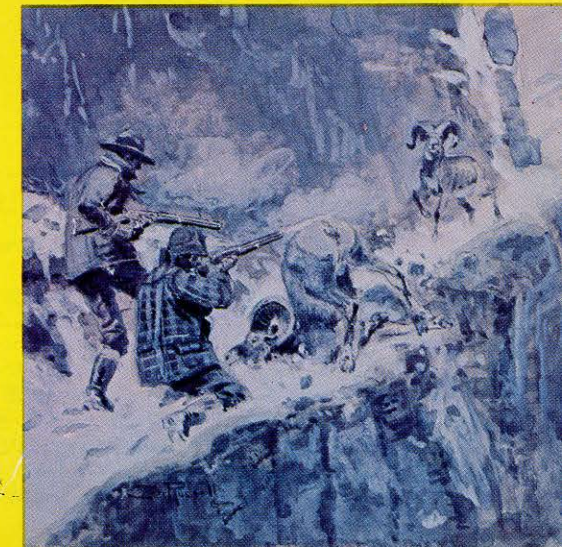
Departure: 10:00 p.m.

Location of train: Exhibit cars and personnel cars on Tracks 1 and 2 in the Hennepin Avenue Station. Horse cars located about 8 blocks away at 701 First Street North.

While the Montana Centennial Train will be bubbling with fun, it will have its serious side too. The art works of two of the most famous western artists, Russell and Remington, will be on display. These have been conservatively appraised at \$60,000.

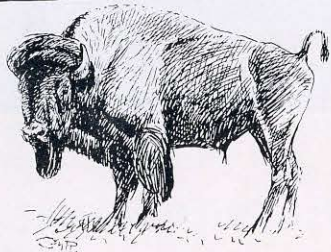


The Foote collection, for insurance purposes is valued at \$140,000 and in another exhibit a single pistol is valued at \$12,000. In fact, much of this is priceless because it cannot be replaced.



MONTANA

Centennial TRAIN



1

2



3



6



7



8

11



12

13



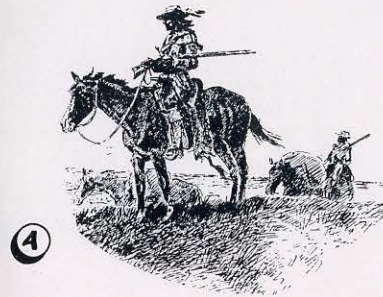
14

HERE'S HOW YOU'LL SEE 'EM

1. Buffalo
2. Mounted Color Bearers
3. Indian Dancers
4. Fur Trader
5. Prospector
6. Conestoga Wagon
7. Virginia City Side Saddlers
8. Stage Coach
9. Chuck Wagon
10. Cowboys & Cowgirls
11. Tallyho Wagon
12. Monte Montana, Jr. & Double N Wranglers
13. Band
14. Cowboys & Cowgirls
15. Packstring
16. Cowboys & Cowgirls
17. Tallyho

The PARADE CONSISTS

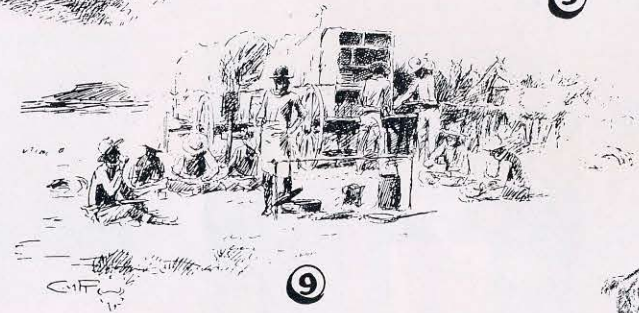
OF



4



5



9



10



15



16

17

CENTENNIAL EXHIBITS

Centennial Train exhibits from Montana's colorful past will include relics related to Custer, Cody, Calamity Jane, Homesteaders, Outlaws and other aspects of Treasure State heritage. While much of what once was relegated to the past, Centennial Train exhibits will include much that still is.

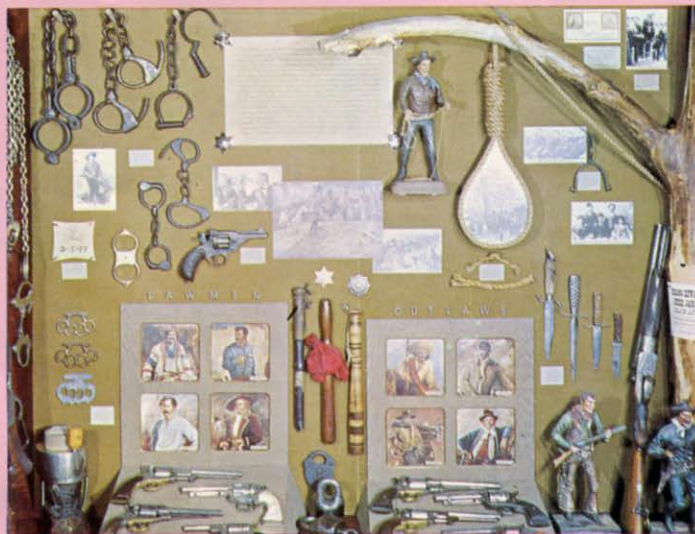


\$1,000,000 Worth of GOLD

Aboard the Train will be a fabulous collection of gold nuggets and dust. A million dollars worth all told. The same metal responsible for Montana being settled, responsible for fortunes, outlaws and vigilantes.

It's possible in Montana to see buffalo roam. Elk, moose, lions, bears and other big game find the Treasure State a fine place to live. Many of these animals will be represented on the Centennial Train.

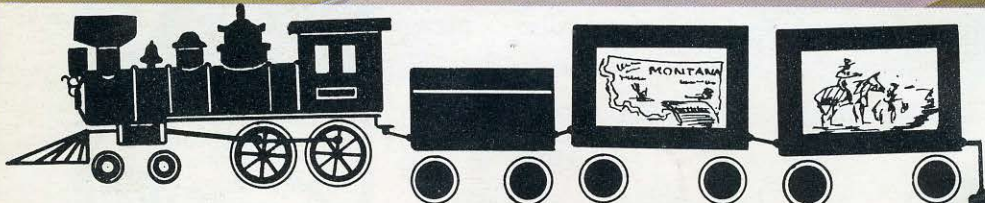




When the miners came to Montana the bad guys came too. The above exhibit is dedicated to the good guys and the the other kind. After many ruthless murders and robberies, vigilance committees were formed to dispense justice quickly at the end of a rope. Sometimes the vigilantes wore the masks.



One of the most fabled women of the west was Calamity Jane. Modern television has delivered an image of this woman not always consistent with fact. The true picture of Calamity can be seen on the Montana Centennial Train.



From the
THE BIG TRAIN
to the
BIG SKY Country

Montana Centennial Train Hdqtrs.
 Box 1964
 Bozeman, Mont.