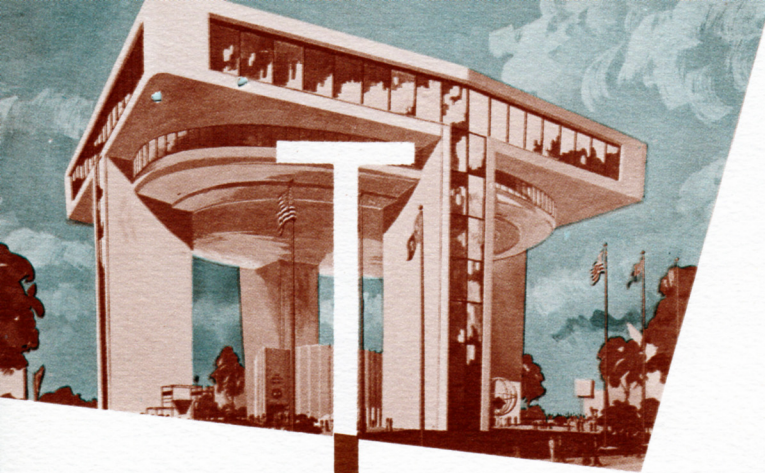


*The Official  
World's Fair Club*







# THE TERRACE CLUB

The New York World's Fair 1964-1965 will have available for members the finest possible dining and other Club facilities. To be called "The Terrace Club", the Official Club of the Fair, it will be located atop the Heliport building, one of the highest in the Fair, to provide a superior view of the most dramatic show on earth. The Club will be administered by a Board of Governors appointed by the World's Fair Corporation and the Port Authority. Situated at the aerial gateway to the Fair, just beneath the heliport landing area, the Club will be the only location of the Fair's official receptions for visiting Heads of State and other dignitaries.





On special occasions the Club facilities can be expanded to accommodate as many as eleven hundred guests. The floor below will contain a luxurious lounge featuring Cocktails Around the World that are to be found only in the most famous international cafes.

The entire two upper floors, including Club facilities, will be glass enclosed and will command a view of the entire panorama of the Fair, the magnificent Manhattan skyline and aircraft arriving and departing from New York International and LaGuardia Airports.

A modern high-speed elevator for Club members and their guests will operate from the ground level to the Heliport lounge and upper floors of the building.

A scheduled helicopter service will be provided at frequent intervals to and from downtown and midtown Manhattan, the metropolitan airports and surrounding suburban points. Convenient parking facilities will be available to members and their guests.

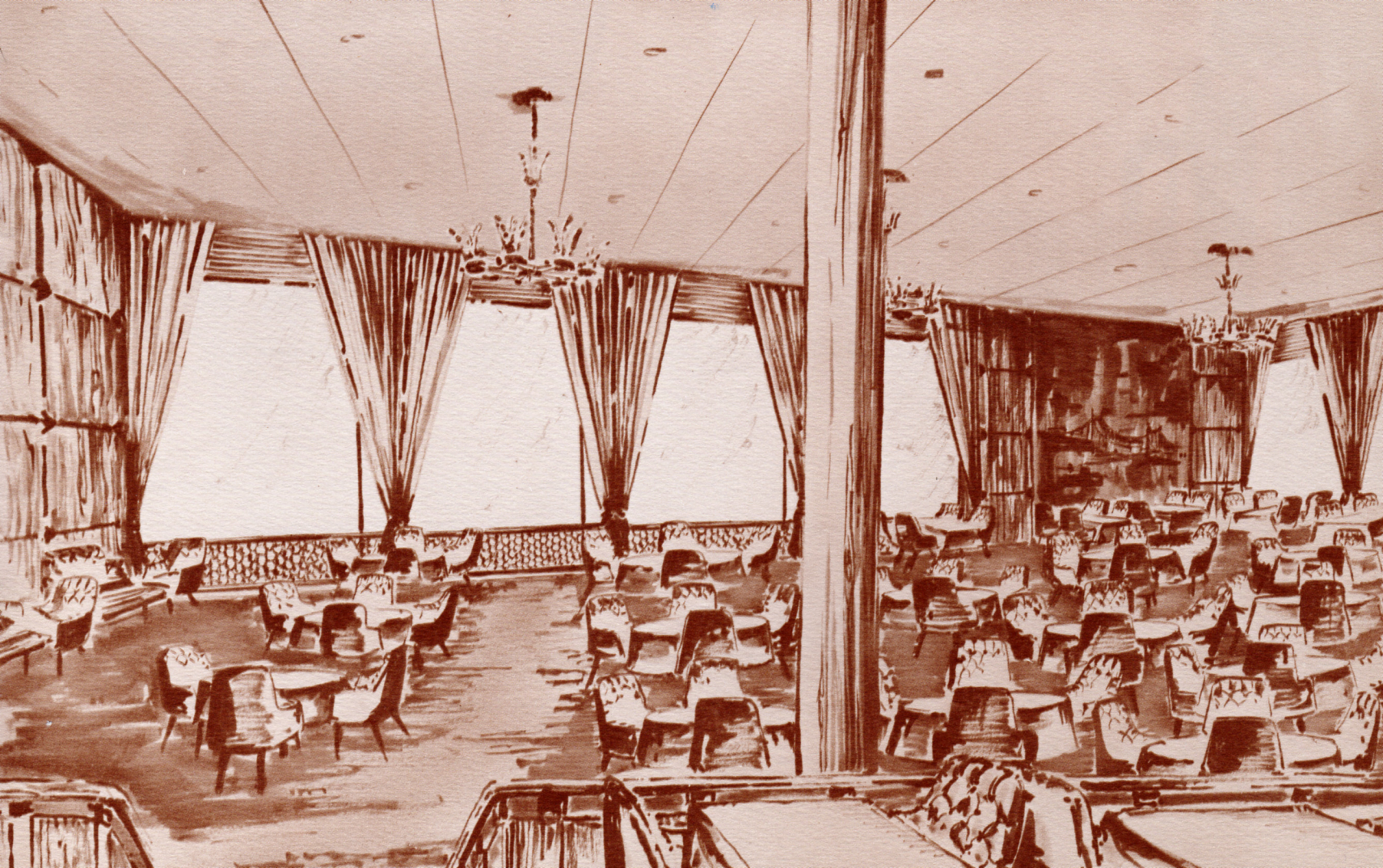


# MEMBERS

# OF THE TERRACE CLUB

- will enjoy the advantages, privileges and facilities of the Official World's Fair Club in a building strategically located to provide easy access to all areas of the Fair grounds.
- will receive a special pass to the Fair, an automobile emblem and shield, convenient parking, and an elevator pass to the Club.
- will have the use of a luxuriously appointed lounge and rooms of various sizes for private business meetings, luncheons and dinners.









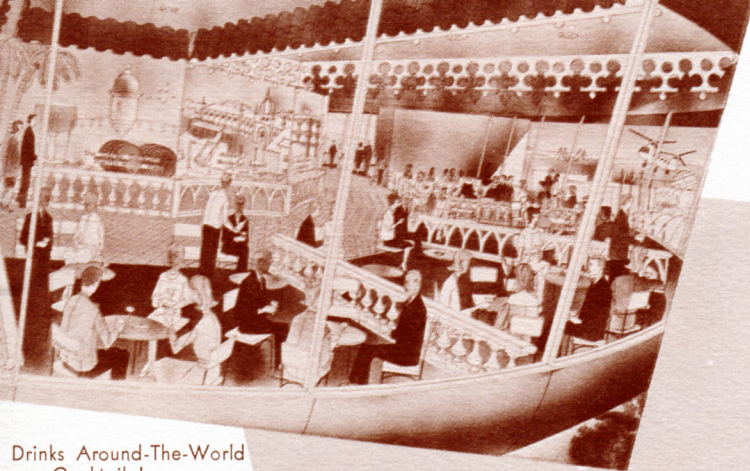
A specially selected and trained staff will be available at all times to serve members and guests.

The menu will vary daily and offer a wide selection of international cuisine and the finest of American and imported wines and liquors.

Special menus can be arranged if ordered two days in advance.

Each member will have guest privileges. Message service will be provided. Television and radio facilities will be available.





Drinks Around-The-World  
Cocktail Lounge

The World's Fair Heliport Building and The Terrace Club are scheduled to open in October 1963, approximately six months before the inauguration of the Fair and to be in continuous operation through both years of the Fair until the fall of 1965. \$1,250 covers membership for this entire period. This includes all Federal and New York City dues taxes.

Associate memberships are available to the wives of members at \$125 for the two years. This also includes all Federal and New York City dues taxes.

All applications for membership must be approved by the Board of Governors.



## BOARD OF GOVERNORS

*Chairman*..... WILLIAM E. ROBINSON  
*Vice Chairman*..... HOWARD S. CULLMAN  
*Treasurer*..... ROBERT D. L. GARDINER  
*Secretary*..... RICHARD C. PATTERSON

RALPH J. BUNCHE

JOHN J. CLANCY

THOMAS J. DEEGAN, JR.

BERNARD F. GIMBEL

JAMES C. KELLOGG, III

MRS. MARY W. LASKER

MATTHIAS E. LUKENS

JOSEPH A. MARTINO

CHARLES POLETTI

BAYARD F. POPE

### *Ex-Officio*

ROBERT MOSES

*President, New York World's Fair 1964-1965 Corporation*

AUSTIN J. TOBIN

*Executive Director, The Port of New York Authority*