

WORLD'S FAIR MERCHANDISE SALE CATALOG

New York

George E. Porcell Enterprises, Inc.

1965

WORLD'S FAIR MERCHANDISE SALE CATALOG

PUBLISHER: George E. Porcell Enterprises, Inc.

EDITOR-IN-CHIEF: Frank J. Murphy

ASSOCIATE EDITOR: Linda Hecht

ASSISTANTS TO THE EDITOR: Anne Berger, Beverly Marcus, James Quinn, Judy Porcell

ART & PHOTOGRAPHY DIRECTION: Peter Greene

PHOTOGRAPHERS: Leonard Trupin, Dean Mengel

COVER DESIGN: Russell North

ADVERTISING & PUBLIC RELATIONS: The Softness Group, Inc.

Copyright, 1965, by GEORGE E. PORCELL ENTERPRISES, INC. All rights reserved.  
This book, or any part thereof, may not be reproduced in any form without the  
written permission of the publishers.

PRINTED IN THE UNITED STATES OF AMERICA

By Hallmark Lithographers

# I N D E X

<u>CATEGORY</u>	<u>CODE LETTERS</u>	<u>PAGE</u>
Special Items	S	4
Audio, Movie & Photographic Equipment	A	8
Buildings & Major Structural Units	B	10
Curios	C	14
Display Fixtures & Counters	D	20
Electrical Equipment	E	25
Heating & Air Conditioning Units	HE	27
Household Furnishings & Ornaments	HO	29
Kitchen Utensils	K	32
Lighting Fixtures	L	33
Office Equipment	OFE	36
Office Furniture	OFF	39
Outdoor Fixtures	OUF	43
Paintings & Objects of Art	PA	45
Plumbing Equipment	PL	48
Restaurant Dining Room Equipment	RD	50
Restaurant Kitchen Equipment	RK	54
Women's Apparel & Accessories	W	64
Grab Bag	G	68
Photographs		71
Information Regarding Purchase of Items		79
Instructions for Using This Catalog		80

SPECIAL ITEMS

ITEM NO. / QUANTITY / DESCRIPTION	PAVILION & INSPECTION TIME	PRICE ORIGINAL / ASKING
<p>* S-1 / 12 HAND CARVED ACACIA WOOD PANELS PORTRAYING THE COURSE OF PHILIPPINE HISTORY. These panels were designed by prominent muralist Carlos Francisco, and the design was executed by the woodcarvers of Paeta Laguna, a large Philippine art colony. It took 30 men over a year to complete this project. Each panel measures: 12'9" L x 6'6" H x 8" thick. They can be broken down and reassembled for shipping purposes into units that have an average width of 18". ( Picture on page 7 )</p>	<p>Philippine Pavilion 10AM-6PM After Fair by Appointment</p>	<p>- /Best Offer</p>
<p>* S-2 / 3 ELK, one two-year-old heifer, one three-year-old cow, one four-year-old bull, captured at Bison Range in Montana by the Montana Fish and Game Commission. These elk are all in excellent health and good physical condition. If you're proud of your front law, why settle for a ceramic deer? ( Picture on page 78 )</p>	<p>Montana Pavilion 9AM-5PM After Fair by Appointment</p>	<p>- /\$500 each</p>
<p>* S-3 / MISSISSIPPI RIVER EXCURSION BOAT, specifications the same as for the S-5 excursion boats except for specially made painted wooden superstructure simulating a small scale Mississippi paddle-wheeler. ( Picture on page 7 )</p>	<p>Maroda Boats 9AM-9PM After Fair 9:30AM-4PM</p>	<p>\$17,800/\$7,500</p>
<p>* S-4 / GENERAL ELECTRIC COMPUTER-OPERATED LIGHTING SYSTEM. Punch tape control with 8 SCR panels, each panel contains 12 SCR (sidicon) units. Each panel has 3 pulse circuit breakers with maximum load on each pole at 13.28 kilowatts. Two substations supply 120-208 volts. Overall dimensions: 8' x 6' W. With slight modification can be used for heavy industrial use such as programming steel mill production. ( Picture on page 78 )</p>	<p>General Electric 10AM-10PM After Fair 9AM-5PM</p>	<p>- /\$35,000</p>



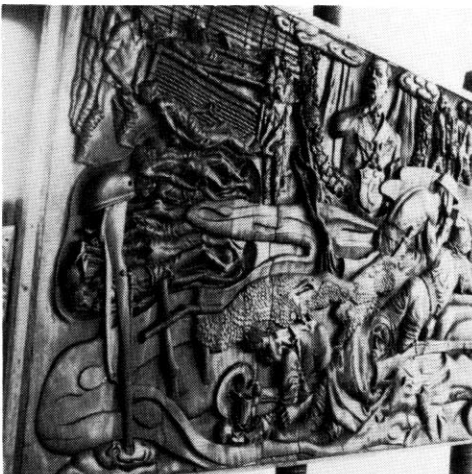
## SPECIAL ITEMS

ITEM NO. / QUANTITY / DESCRIPTION	PAVILION & INSPECTION TIME	PRICE ORIGINAL / ASKING
<p>* S-5 / 10 LARGE (30 PASSENGER) EXCURSION BOATS, fireproof aluminum and fiberglass construction with styrofoam pontoons. Some boats are equipped with 45 hp. Mercruiser inboard motors. Some boats have only 6 months of use in Artesian well lake water. Specifications for all boats:</p> <p>Length- 30' Beam 10'</p> <p>Height- with pontoons: 113½"</p> <p>Displacement- 4 tons</p> <p>Draft - 10"/Speed- 330 rpm or 6 knots</p> <p>Speed with optional 110 hp. mercruiser motor- 14 knots.</p> <p>( Picture on page 72 &amp; 77 )</p>	<p>Maroda Boats</p> <p>9AM-9PM</p> <p>After Fair</p> <p>9:30AM-4PM</p>	<p>\$16,800/\$3500-\$7000</p> <p>optional motor-</p> <p>\$1600 extra</p>
<p>* S-6 / ANTIQUE ORIENTAL HANDLOOM, (18th or 19th century), mounted on heavy duty modern steel frame, does widths of up to 60" and bolts of up to 300 yds. Comes with accessories of shuttle and spinning wheel.</p> <p>( Picture on page 77 )</p>	<p>Pakistan Pavilion</p> <p>12:30PM-1:30PM</p> <p>After Fair by</p> <p>Appointment</p>	<p>- /\$600</p>
<p>S-7 / ANTIQUE SILVER HOSTENSOIRE, 18th century, 27½" high. Exquisite hand-worked example of Spanish craftsmanship. "Radiant Sun" design encrusted with precious stones. First time item like this has been available to the general public in the United States.</p> <p>( Picture on page 78 )</p>	<p>Spanish Pavilion</p> <p>10AM-10PM</p> <p>After Fair by</p> <p>Appointment</p>	<p>- /\$11,590</p>
<p>* S-8 / LARGE UMBRELLA-TYPE OVERHEAD LIGHTING SCREEN, 12' diameter, violet and white patterned fabric on light steel frame, 17 spotlights wire to frame. Frame supported from roof by four 40' lengths of 1½" steel pipe.</p> <p>( Picture on page 72 )</p>	<p>Guinea Pavilion</p> <p>11:30AM-9:00PM</p> <p>After Fair by</p> <p>Appointment</p>	<p>- /Best Offer</p>
<p>S-9 / 87 EIGHT INCH HAND SEWN CLOTH DOLLS, each one gaily costumed to illustrate the evolution of Philippino dress. Costumes run from the Middle Ages to the present.</p>	<p>Philippine Pavilion</p> <p>10AM-6PM</p> <p>After Fair by</p> <p>Appointment</p>	<p>- /Best Offer</p>

## SPECIAL ITEMS

ITEM NO. / QUANTITY / DESCRIPTION	PAVILION & INSPECTION TIME	PRICE ORIGINAL / ASKING
<p>* S-10 / MOTHER OF PEARL SHELL AND HAND HAMMERED BRASS LIGHTING UNIT, shells wired together in a globular screen, diameter 42". ( Picture on page 7 )</p>	<p>Philippine Pavilion 10AM-6PM After Fair by Appointment</p>	<p>- /Best Offer</p>
<p>S-11 / 3 SMALL GLOBE DISPLAY UNITS, made of heavy duty transparent plastic affording 360° visibility, set on stream- lined conical steel base- 24" high. Seam stripped with black plastic; unit opens along vertical equator with four small display lights. Globe 40" diameter.</p>	<p>Berlin Pavilion 10AM-10PM After Fair by Appointment</p>	<p>\$200 /Best Offer</p>
<p>S-12 / 65 EXTRA LARGE SILENT 16mm FILM PROJECTORS, made up of the following components: (a) Xenosol II lamp housing type 23-23 (b) Norelco projection heads - 16mm - silent type 101659 (c) Knitron 230V-10 amp. rectifiers. Continuous loop film feeder suitable for use in creating various theatrical back- drops.</p>	<p>Bell Telephone Pavilion 9AM-5PM After Fair 9AM-5PM</p>	<p>\$4000 /Best Offer each</p>
<p>* S-13 / 3 LARGE GLOBE DISPLAY UNITS, made of heavy duty transparent plastic affording 360° visibility, set on stream- lined conical steel base- 46" high. Seam stripped with black plastic, unit opens along vertical equator. Size of globe: 68" diameter. ( Picture on page 72 )</p>	<p>Berlin Pavilion 10AM-10PM After Fair by Appointment</p>	<p>\$400 /Best Offer</p>
<p>S-14 / 250 "REEVESOUND" FILM PLAYBACK UNITS. Four track, with automatic rewind speed of 36' per minute. Capacity approximately 600' of film.</p>	<p>Bell Telephone Pavilion 9AM-5PM After Fair 9AM-5PM</p>	<p>\$600 /Best Offer each</p>
<p>S-15 / CASTLE- 50' x 30' x 20' stran steel construction Fiberglass stone exterior. Two turrets-steel frame. Can be dismantled and re-erected in sections. ( Picture on page 78 )</p>	<p>Santa Maria Pavilion 9AM-11PM After Fair 8AM-6PM</p>	<p>\$75000 /\$25000</p>

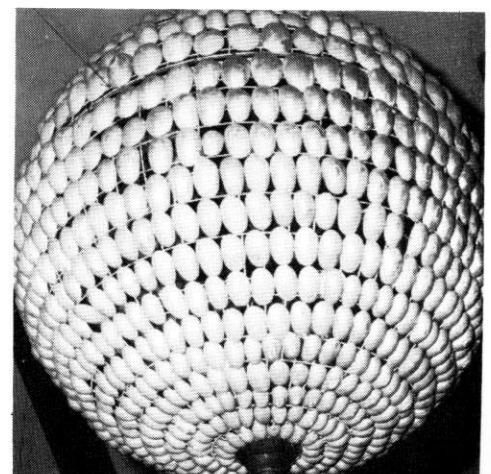
ITEM NO. / QUANTITY / DESCRIPTION	PAVILION & INSPECTION TIME	PRICE ORIGINAL / ASKING
<p>S-16 / 10 FLOATING STYROFOAM DOCKS 8' x 30'. With interlocking connections for 300 running feet of pier or any length that is a multiple of 30'. Equipped with awning, railing, and electrical illumination. ( Picture on page 78 )</p>	<p>Santa Maria Pavilion 9AM-11PM After Fair 8AM-6PM</p>	\$30,000/\$12,500
<p>S-17 / WORLD FAMOUS CAROUSEL - The Phelpman Carousel originally made in 1903 for use at Coney Island, renowned for its hand carved wooden horses (with a camel, a giraffe, and 2 dragon sleds thrown in for good measure). Carved by Marcus Charles Illions. This unit also contains one of the world's largest band organs (453 reed), that incorporates a full brass, woodwind, and toy counter section. The organ runs off a perforated paper roll with an available repertoire of 400 songs. There are seats for 86 people. Electrically operated, it measures 50' in diameter by 28' high and is covered by an all-weather steel roof. The crown bearing was replaced in 1961, and the whole carousel rewired and refurbished in 1964. It is bolted together and can be disassembled into small units for shipping. TO BE SOLD AS UNIT ONLY.</p>	<p>Marechal, Inc. 10AM-10PM After Fair by Appointment</p>	- /\$50,000
<p>IMPORTANT! <u>R E A D</u> "INFORMATION REGARDING PURCHASE OF ITEMS" ON PG. SEVENTY NINE.</p>		



\* S-1



\* S-3



\* S-10

AUDIO, MOVIE & PHOTOGRAPHIC EQUIPMENT

ITEM NO. / QUANTITY / DESCRIPTION	PAVILION & INSPECTION TIME	PRICE ORIGINAL / ASKING
No. A-1 / 1 "UNIVERSITY" OUTDOOR HI-FI SPEAKER	Philippine Pavilion 10AM-6PM After Fair 9AM-5PM	- /Best Offer
No. A-2 / 1 ROLLEIFLEX CAMERA. (DBP/T 2183404/DBGM), Tessar 1:3. 5/f=75mm lens. Ultrablitz Meteor SP flash with Graflex breakaway attachment.	Hall of Free Enterprise 10:00AM-10:00PM After Fair by Appointment	\$285 /Best Offer
No. A-3 / 1 SMALL 16mm FILM PROJECTOR	Pakistan Pavilion 12:30PM-1:30PM After Fair by Appointment	- /Best Offer
* No. A-4 /1 RADIO & PHONOGRAPH STEREO UNIT, 4 speakers, dark mahogany finish. Make: Radiowealth Model: Claire de Lune. Console size: 52" L x 22" W x 26" H. ( Picture on page 9 )	Philippine Pavilion 10AM-6PM After Fair 9AM-5PM	- /Best Offer
No. A-5 / 1 "DUKANE" SIX FT. EXTENSION MICROPHONE, Model # 7A160, with two 12" speakers.	Guinea Pavilion 11:30AM-9:00PM After Fair by Appointment	- /Best Offer
No. A-6 / 1 MICROPHONE DESK TOP, Dukane Model 7A290, Impedance 150 ohms, 60-10,000 cycles	Philippine Pavilion 10AM-6PM After Fair 9AM-5PM	- /Best Offer
No. A-7 / 11 TAPE RECORDERS WITH LOUD SPEAKERS	Pakistan Pavilion 12:30PM-1:30PM After Fair by Appointment	- /Best Offer
No. A-8 / 1 DUKANE MODEL 1B45 AMPLIFIER, 100 watts	Philippine Pavilion 10AM-6PM After Fair 9AM-5PM	- /Best Offer

AUDIO, MOVIE & PHOTOGRAPHIC EQUIPMENT

ITEM NO. / QUANTITY / DESCRIPTION	PAVILION & INSPECTION TIME	PRICE ORIGINAL / ASKING
No. A-9 / 1 MICROPHONE STAND	Philippine Pavilion 10AM-6PM After Fair 9AM-5PM	\$7.00 /Best Offer
No. A-10 / 24 8 INCH SPEAKERS, Make: Dukane, Model 9935B-8	Philippine Pavilion 10AM-6PM After Fair 9AM-5PM	- /Best Offer
No. A-11 / 1 "ELECTRO VOICE" OUTDOOR P.A. SPEAKER	Philippine Pavilion 10AM-6PM After Fair 9AM-5PM	- /Best Offer

IMPORTANT! R E A D "INFORMATION REGARDING PURCHASE OF ITEMS" ON PG. SEVENTY NINE.



\* A-4

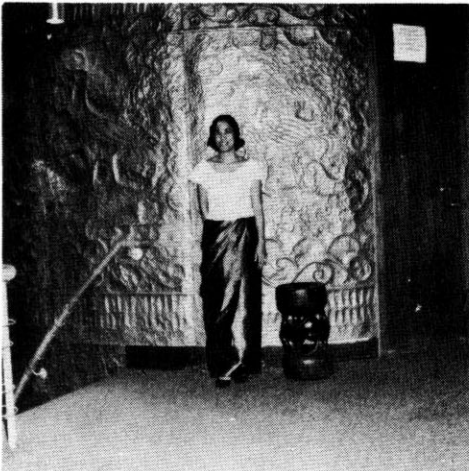
ITEM NO.	QUANTITY/DESCRIPTION	PAVILION & INSPECTION TIME	PRICE ORIGINAL/ASKING
*	<p>No. B-1 / PAGODA STYLE PAVILION; Oriental Restaurant to take out. Pre-fabricated bolt-jointed, 70' high x 60' diameter. Made of sculptured nara-wood beams, supported by tubular steel rope-wound columns. Features scrollworked, hammered brass wall veneer, 4' long x 10' high sections thin enough to be nailed to backing; and large shell window screens set in a dark hardwood frame which serve as wind-breakers. (5' high x 4' wide). ( Picture on page 12 )</p>	<p>Contact: George E. Porcell Enterprises, Inc. Box 12, Kings- bridge Station, Bronx, N.Y.</p>	<p>\$350,000 - /Best Offer</p>
*	<p>No. B-2 / THREE LARGE TRAILER UNITS:</p> <p>(a) 2 solar glass sided exhibition trailers. Overall dimensions, 10'H x 48'L x 10'W. 16 tinted glass panels (8 to a side) with weatherproof protective plywood covering for each. Two side canvass awnings (3'W x 48'L) provided. Steel "I"-beam frames under foundation of each trailer, can be mounted on undercarriage with 4 pneumatic tires, and affords sturdy, safe installation at any location. Interior equipment on each trailer consists of: four 1 ton "Fedders" air conditioning and heating units (two way); electrical outlets of 150 amp capacity, and beautiful flourescent lighting above drop ceiling of expanded plastic. One trailer contains plumbing connections and 15 kw hot water heater, 40 gallon capacity.</p> <p>(b) 1 wood sided office or storage trailer. Overall dimensions: 6'W x 35'L x 8'H. Equipped with one 1 ton "Fedders" air conditioning and heating unit (two way unit), two circulating fans, 200 amp capacity electrical wiring and outlets. Center double doors and doors at both ends. ( Picture on page 12 )</p>	"	<p>\$65,000 for 3 - /Best Offer</p>
	<p>No. B-3 / One PREFABRICATED CONICAL WOODEN ROOF, 60' from base to apex and 120' diameter at base. Thirty radial wood beams (1' x 1½' x 60') bolted into prefab reinforced steel sections at base and into reinforced steel hub at apex.</p>	<p>Guinea Pavilion 11:30AM-9PM After Fair by Appointment</p>	<p>\$50,000 - /Best Offer</p>

# BUILDINGS AND MAJOR STRUCTURAL UNITS

ITEM NO.	QUANTITY/DESCRIPTION	PAVILION & INSPECTION TIME	PRICE ORIGINAL/ASKING
No. B-4 /	One 32' x 40' BUILDING, SKI LODGE STYLE: 12' ceiling, log sided, flat roof, prefab, easily dismantled (4' panels). 6' porch along two sides, walls are raised 2' above roof to give old-fashioned firewall effect, natural finish exterior. The appearance of this building resembles the old country store fronts. Was used as main entrance of pavilion.	Montana Pavilion 9AM-5PM After Fair by Appointment	- / \$2000
No. B-5 /	One 16' x 50' BUILDING, SKI CABIN STYLE, log sided, flat roof, prefab, easily dismantled (4' panels), currently used.	"	- / \$1000
* No. B-6 /	One OCTAGONAL OPEN PAVILION BUILDING, open concession style 18' diameter, natural finish. ( Picture on page 12 )	"	- / \$100
No. B-7 /	One PUBLIC RESTROOM BUILDING, 16' x 56', 6 rooms and full length hall complete with showers. Log sided, flat roof, prefab, easily dismantled, natural finish exterior, 4' panels.	"	- / \$2000
No. B-8 /	One OPEN OCTAGONAL PAVILION BUILDING, band-stand style, 28' diameter, natural finish.	"	- / \$400
No. B-9 /	One LARGE PREFABRICATED STORAGE ROOM. Overall dimensions 21' long x 8' wide x 8' high, constructed for outdoor use, 4' plaster board panels with plywood backing; framework: 1½" x 3½" unfinished fir; roof: 5½" x 1½" unfinished fir beams covered with 4' tarpapered plywood panels. "BERRY" overhead hinge and spring door, steel construction.	Pakistan Pavilion 12:30-1:30PM After Fair by Appointment	- / Best Offer



ITEM NO.	QUANTITY/DESCRIPTION	PAVILION & INSPECTION TIME	PRICE ORIGINAL/ASKING
No. B-10	One BIG OPEN STAND, prefab made. Inside area size 50' x 15', roof 62' x 26'. Could be used for meal operations.	BFE., INC.	- - /Best Offer
No. B-11	One "GLIDDEN" MONOSTRUCTURE CONCESSION STAND COMFORT STATION. Completely equipped for rest room operation with toilet bowls, hand bowls, and sinks, size 20' x 14'.	"	- /Best Offer
No. B-12	CIRCULAR SERVICE STAND AND COUNTER (redwood slat construction). 17½' diameter (55' in circumference) canvas top with steel ribbed frame and center pole. 2' wide circular formica counter. 3 refrigerated display and storage cases plus floor model (two door top opening) freezer and compressor. Ideal for permanent or transient refreshment operation.	The Chunky Corp. 10AM-10PM After Fair by Appointment	- /Best Offer
No. B-13	3 LOG SIDED BLOCKHOUSES, FRONTIER DESIGN, suitable for use as swimming cabanas, playhouses, or gazebos. All are 12'L x 12'W x 8'H, and are constructed of 4' prefab panels. (a) Blockhouse on 12'H x 8'square log sided standard. (b) Blockhouse with finished roof. (c) Just plain old blockhouse.	Montana Pavilion 9AM-5PM After Fair by Appointment	- / \$200 - / \$100 - / \$50
IMPORTANT! <u>R E A D</u> "INFORMATION REGARDING PURCHASE OF ITEMS" ON PG. SEVENTY NINE.			



\* B-1



\* B-6



\* B-2



THE FOLLOWING IS ONLY A PARTIAL LISTING. INFORMATION OR INQUIRIES ABOUT OTHER EQUIPMENT AVAILABLE AT THESE PAVILIONS MAY BE HAD BY CONTACTING GEORGE E. PORCELL ENTERPRISES, INC. P.O. BOX 12, KINGSBRIDGE STATION, BRONX, NEW YORK.

PARKER PEN: this attractive building with steel frame is for sale and can be easily relocated. Also available are air conditioning, heating, and electrical systems; plus small items such as desks and chairs.

HOLLYWOOD: This building contains beautiful props, air conditioning, heating, and electrical equipment.

AVIS: These two exhibits contain outdoor lighting fixtures, beautiful ornamental fencing, and electrical equipment.

BARGREEN: (formerly Pavilion of Fine Arts). Building is made of glass with aluminum frame and is suitable for re-erection. Also for sale are the heating, air conditioning, and electrical equipment.

NEW ENGLAND STATES: Nine prefab buildings, easily re-erected, five large bronze weather vanes, steel and plexiglass umbrellas, 30' long redwood bridge, liberty tree, unusual granite, and heating, air conditioning, and electrical equipment.

MAJOR INDUSTRIAL EXHIBIT: This unusual pavilion contains a redwood garage, large redwood flower boxes, gazebos, aviaries, two small glass buildings 10' x 6' x 10', clocks, clear plexiglass, and a most unusual bleacher arrangement that can lift 500 people into the upstairs theatre. The wall is worked by compressed air.

PRICES ON THE ABOVE ITEMS ARE OPEN TO BIDS.

## C U R I O S

ITEM NO. / QUANTITY / DESCRIPTION	PAVILION & INSPECTION TIME	PRICE ORIGINAL / ASKING
C-1 / STONE COLUMN FROM THE CAPERNAUM SYNAGOGUE with carved engraving, 4' tall x 18" diameter.	American-Israel Pavilion 10AM-10PM After Fair by Appointment	- /Best Offer
C-2 / ANCIENT IDOLS. Clay "gods" and "goddesses" discovered in excavations; up to 10" tall.	"	- /Best Offer
C-3 / BIBLICAL WEAPONS discovered in excavations, assorted axes, arrow and spear heads.	"	- /Best Offer
C-4 / FRAGMENTS OF BIBLICAL STONE COLUMNS, capitals and pedestals recovered from Old Testament town of Afek, average size of fragment: 2' high x 16" diameter.	"	- /Best Offer
C-5 / BIBLICAL GLASSWARE. Glass objects discovered in excavations, assorted vials, flasks, and measures.	"	- /Best Offer
C-6 / Small quantity HANDBLOWN GLASSWARE, unique Bartal design and craftsmanship.	"	- /Best Offer
C-7 / Small quantity HANDMADE CERAMICS, modern Israeli design.	"	- /Best Offer
C-8 / Set of WHOLE CAPIZ SHELL HOUSEHOLD ACCESSORIES, Capiz shell is one of the sources from which Mother of Pearl is made. Shell is polished, laminated, ground, and then faced with transparent plastic sheets set in a brass trim.	Philippine Pavilion 10AM-6PM After Fair by Appointment	- /Best Offer
Items:		
(a) Hamper, 2' H x 18" L x 10" W		
(b) Waste Basket, 18" x 16" x 10"		
(c) Jewelry Box, 5" x 10" x 6"		
C-9 / BIBLICAL POTTERY. Clay objects discovered in various excavations, jars and lamps up to 18" high.	American-Israel Pavilion 10AM-10PM After Fair by Appointment	- /Best Offer

ITEM NO. / QUANTITY / DESCRIPTION	PAVILION & INSPECTION TIME	PRICE ORIGINAL / ASKING
<p>* C-10 / 600 sets CARVED WOOD &amp; COCOANUT RIB PLACE SETTINGS. Made up of: 6 hand-carved carabao (water buffalo head) napkin holders; 6 "tingting" (woven cocoanut midrib mats); and 6 washable, color-matched linen napkins (available in assorted colors).</p> <p>( Picture on page 72 )</p>	<p>Philippine Pavilion 10AM-6PM After Fair by Appointment</p>	<p>\$4.00 /\$2.00 per set per set</p>
<p>* C-11 / 9 ANTIQUE MORO BRASSWARE, rare finely-crafted jars and urns, largest 24" in height.</p> <p>( Picture on page 19 &amp; 72 )</p>	<p>"</p>	<p>- /Best Offer</p>
<p>* C-12 / Small quantity ELEPHANT - FOOT STOOLS, exquisitely manicured genuine Elephant's foot with cheetah-skin seat for those who would like to sit on an Elephant without being offended by the odor of peanuts.</p> <p>( Picture on page 72 )</p>	<p>Sudan Pavilion 10AM-10PM After Fair 10AM-5PM</p>	<p>\$250 /Best Offer</p>
<p>* C-13 / SUDANESE CEREMONIAL, HAND-WOVEN WAR SHIELDS, also CONGA, KETTLE, and TOM-TOM DRUMS intricately hand crafted of antelope and zebra skins.</p> <p>( Picture on page 19 )</p>	<p>"</p>	<p>- /Best Offer</p>
<p>* C-14 / SUDANESE SWORDS. Authentic Sudanese fuzzy-wuzzy knives, available with or without silver inlay: ebony handle with camel hide case and belt. Never before seen in the U.S.</p> <p>( Picture on page 79 )</p>	<p>"</p>	<p>- /Best Offer</p>
<p>C-15 / Historic SCIMITAR with ebony handle, camel hide case and belt. Relic of the fuzzy-wuzzy wars. 3' long.</p>	<p>"</p>	<p>- /Best Offer</p>
<p>C-16 / MODERN SHORT SWORD with case of stamped camel hide.</p>	<p>"</p>	<p>- /Best Offer</p>
<p>* C-17 / NATIVE ANIMAL SKINS:</p> <p>(a) 2 leopard skins with stuffed head and eyes</p> <p>(b) leopard skin 25" x 55"</p> <p>(c) zebra skin 50" x 80"</p> <p>(d) lion-headed skin 50" x 25"</p> <p>All skins treated and finished.</p> <p>( Picture on page 19 )</p>	<p>"</p>	<p>- / \$150 to \$350 acc. to size.</p>

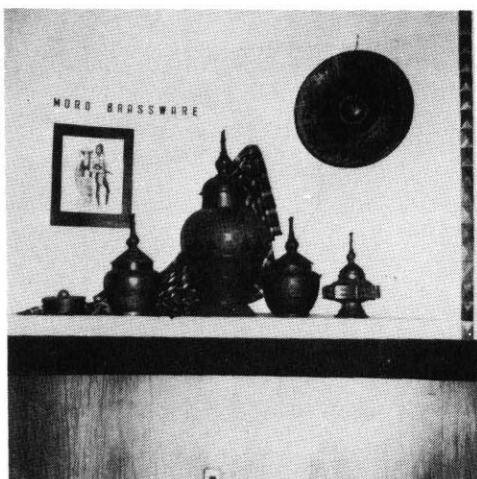
ITEM NO. / QUANTITY / DESCRIPTION	PAVILION & INSPECTION TIME	PRICE ORIGINAL / ASKING
* C-18 / STRETCHED LEATHER STOPPER BOTTLES perfect for den or study, also SWORDS and REED PLATES of similar craftsmanship. ( Picture on page 73 )	Guinea Pavilion 11:30AM-9:00PM After Fair by Appointment	- /Best Offer
* C-19 / "KORA" - 21 STRINGED RHYTHM INSTRUMENT, cowhide drum with hardwood neck and sliding rawhide pitch adjusters produces muted harp-like tones ( Picture on page 73 )	"	- /\$25.00
C-20 / SMALL, 20" ARM DRUMS	"	- / \$5.
* C-21 / COWHIDE TOM-TOM AND KETTLE DRUMS. Drum head of raw antelope and scraped cowhide. Tom-tom held under arm and resonance is adjusted by applying pres- sure to network of cords that run from drum head. ( Picture on page 73 )	"	- /Best Offer
* C-22 / "BALAFON" MARIMBA LIKE INSTRUMENT, 14 note range made of hardwood slats with gourd resonator; 3' x 1½' ( Picture on page 73 )	"	- /Best Offer
* C-23 / PRIMITIVE DESIGN ANIMAL SKIN RUGS, made of diagonally cut squares of cheetah and antelope hideskin, a network of parti-colored parquet. Without matting. Large: 10' x 6½'; Medium: 6½' x 4'. ( Picture on page 73 )	"	- /Lg. \$100 Med. \$80
* C-24 / FINE ELEPHANT IVORY FIGURINES AND CUPS ( Picture on page 19 )	"	- /Best Offer
C-25 / ANTIQUE NATIVE SPEARS from 3' to 5' in length.	"	- /Best Offer
* C-26 / AFRICAN HAND-CARVED CEREMONIAL MASK with native bows and arrows used in hunting and religious ceremonies. ( Picture on page 73 )	"	- /Best Offer
* C-27 / HAND WOVEN NATIVE WICKER CHAIRS ( Picture on page 73 )	"	- /Best Offer

ITEM NO. / QUANTITY / DESCRIPTION	PAVILION & INSPECTION TIME	PRICE ORIGINAL / ASKING
* C-28 / CHARMING ROUGH-HEWN WOODEN BOWLS. ( Picture on page 73 )	Guinea Pavilion 11:30AM-9:00PM After Fair by Appointment	- /Best Offer
* C-29 / Entire unfinished ELEPHANT TUSKS and lots of extremely RARE SKINS. ( Picture on page 73 )	"	- /Best Offer
C-30 / Breathtaking TROPICAL INSECTS handsomely cotton mounted.	"	- /Best Offer
* C-31 / HAND CARVED FIGURINES of red and black ebony from 8" to 24" tall, animals, masks, and statuettes. ( Picture on page 73 & 74 )	"	- /Best Offer
C-32 / Sudanese natural leather ATTACHE FOLDERS, 16" x 12" with zipper and snap side. Available in a variety of skins.	Sudan Pavilion 10AM-10PM After Fair 10AM-5PM	- /Best Offer
C-33 / HARD CARVED IVORY LETTER OPENER in the shape of a crocodile. Available in sizes 6" to 8".	"	- /Best Offer
C-34 / IVORY CROCODILE FIGURES, 12" and 26" long.	"	- /Best Offer
C-35 / Elephant BOOK ENDS on an ivory base, 8" x 5"; figure is 4" x 3".	"	- /Best Offer
* C-36 / IVORY FIGURES: Rhinos 8" L x 3" H Hippos 6" L x 3" H Elephants 4½" L x 4" H and 5" : x 5" H ( Picture on page 74 )	"	- /Best Offer
* C-37 / 8" STATUETTE OF ANTELOPE GRAZING. Intricately carved ivory base: 2½" H x 2" L. ( Picture on page 74 )	"	- /Best Offer

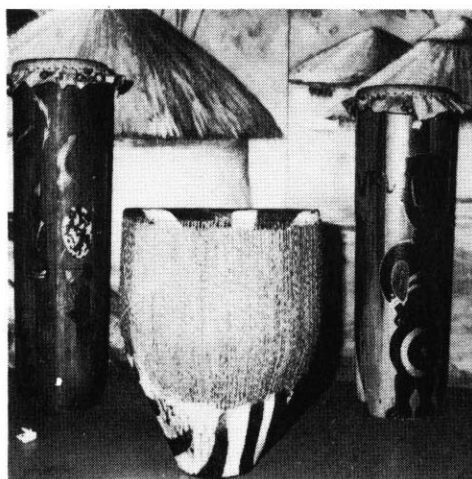
ITEM NO. / QUANTITY / DESCRIPTION	PAVILION & INSPECTION TIME	PRICE ORIGINAL / ASKING
C-38 / STATUE OF GIRAFFE, 12" high in wood.	Sudan Pavilion 10AM-10PM After Fair 10AM-5PM	- /Best Offer
C-39 / ANTELOPE BRIDGE ON AN EBONY BASE depicting four antelopes hailing each other, 18" x 3".	"	- /Best Offer
* C-40 / CIRCULAR REED WALL PLAQUES made by Sudanese convicts. ( Picture on page 19 )	"	- /Best Offer
C-41 / Native OSTRICH FEATHER FANS, approximately 15" diameter.	"	- /\$60.00
C-42 / CIGARETTE BOXES, 7½" L x 4½" W with carved elephant support. Intricate hand carving covering surface depicting lion chasing antelopes.	"	- /Best Offer
C-43 / 12" IVORY VASE, hand carved design of lion and leopard.	"	- /Best Offer
C-44 / 7" IVORY CANDLESTICKS.	"	- /Best Offer
* C-45 / Complete Sudanese IVORY TUSK in bridge form, with rows of carved animals on an ebony base. Two sizes: 12" and 30". ( Picture on page 73 )	"	- /Best Offer
* C-46 / Leatherbound, hand embossed OSTRICH EGGS. ( Picture on page 74 )	"	- /\$60 each
C-47 / NATIVE WOOD CARVINGS AND PLAQUES: <u>Teakwood</u> : Elephant charging with raised tusks 5" x 8" x 10". <u>Mahogany</u> : Round wall plaques inlaid with Sudanese carving in Mother of Pearl, 4" x 6" round. <u>Ebony</u> : Figures of armed Sudanese warriors with spears. 17" x 3". 16" tall figure of early Sudanese Man playing drum between (CONT.)	"	

ITEM NO. / QUANTITY / DESCRIPTION	PAVILION & INSPECTION TIME	PRICE ORIGINAL / ASKING
* C-47 (continued) legs. Head of Sudanese woman, 4" H. HEAR, SEE, SPEAK NO EVIL monkeys, 3' tall. ( Picture on page 74 )	Sudan Pavilion 10AM-10PM After Fair 10AM-5PM	- /Best Offer  - /Best Offer

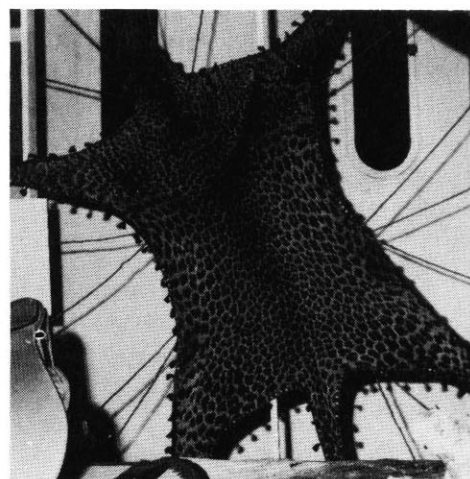
IMPORTANT! R E A D "INFORMATION REGARDING PURCHASE OF ITEMS" ON PG. SEVENTY NINE.



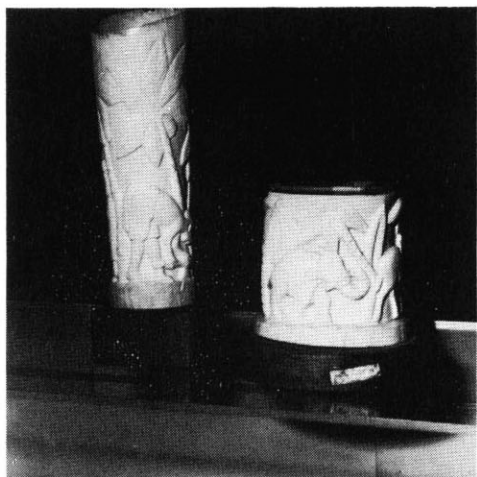
\* C-11



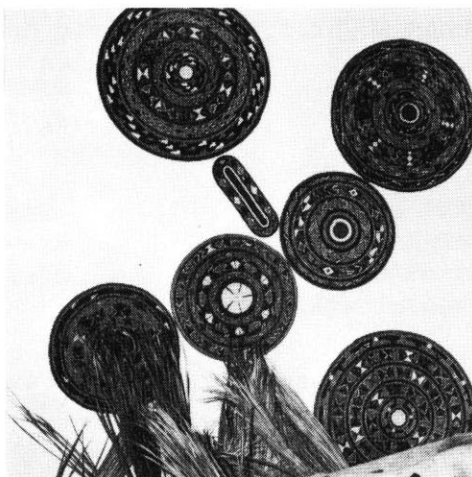
\* C-13



\* C-17



\* C-24



\* C-40



\* C-48



# DISPLAY FIXTURES & COUNTERS

ITEM NO. / QUANTITY / DESCRIPTION	PAVILION & INSPECTION TIME	PRICE ORIGINAL / ASKING
<p>No. D-1 / WALNUT FINISH FORMICA COUNTER AND DISPLAY CASES. The following units fit together in an "L" shape for sales and display area:</p> <ul style="list-style-type: none"> <li>1 Glass front and counter display case, 2 glass shelves, fluorescent light, 59" long, 20" wide, 37½" high.</li> <li>1 Counter with curved end, storage below. 51" long, 20" wide, 37½" high.</li> <li>1 Cabinet with counter space for cash register, 17" wide, 20" deep, 37½" high.</li> <li>1 Display shelf-storage unit, three display shelves (10", 7", 6" deep), overall dimensions 48" long, 24" wide, 48" high.</li> </ul>	<p>Hall of Free Enterprise 10AM-10PM After Fair by Appointment</p>	\$1,300 /Best Offer
<p>No. D-2 / 2 SMALL INFORMATION COUNTERS, White enamel plastic finish, three sided</p> <ul style="list-style-type: none"> <li>(a) one w. gate on left hand side: 5½' L x 3' H x 20" W with 27" gate. Storage space: six 8" H x 14" W compartments &amp; three 4" H folder slots.</li> <li>(b) one w. gate in middle of booth: 40" L x 30" H x 26" W. Storage space: four large compartments, 18" H x 26" W.</li> </ul>	<p>Pakistan Pavilion 12:30PM-1:30PM After Fair by Appointment</p>	- /Best Offer
<p>* No. D-3 / 1 ENCLOSED RECTANGULAR COUNTER, w/4 sliding doors, 5 shelves, size of unit: 55" W x 90" L x 40" H x 13" width of counter ( Picture on page 24 )</p>	<p>Dynamic Maturity Pavilion 9AM-5PM After Fair 9AM-5PM</p>	\$1,200 /Best Offer
<p>* No. D-4 / 3 SIX-SIDED KIOSKS</p>	"	\$4,000 /Best Offer each
<p>* No. D-5 / 1 ROTATING MAP, 9 electric panels reversing to give one side Berlin the other New York. Each panel 11" wide giving a total of 99" in width, and the height is 100". The map is plastic and illuminated. ( Picture on page 24 )</p>	<p>Berlin Pavilion 10AM-10PM After Fair by Appointment</p>	\$2,000 /Best Offer



# DISPLAY FIXTURES & COUNTERS

ITEM NO. / QUANTITY / DESCRIPTION	PAVILION & INSPECTION TIME	PRICE ORIGINAL / ASKING
No. D-6 / 1 CIRCULAR PLASTIC TABLE with pictures of Berlin. 19 round circles for displaying pictures (12" diameter), with 6 strips for description (11½" long by 2" wide).	Berlin Pavilion 10AM-10PM After Fair by	\$300 /Best Offer
* No. D-7 / 1 CIRCULAR PLASTIC TABLE, 40" diameter in blue and white, showing Berlin as a traffic crosspoint in Europe. ( Picture on page 24 )	"	\$100 /Best Offer
No. D-8 / 1 CIRCULAR PLASTIC TABLE, 40" diameter in three dimensional design with 3 different types of lighting to show various areas of interest and location of important cities.	"	\$800 /Best Offer
No. D-9 / 6 LARGE WALL SHOWCASES, sliding glass doors 1/8" thick, overhead fluorescent lighting (2 lamps) w. honey-comb screen, color- (exterior) dark blue, (interior) white. Sliding doors 6'6" H x 2'10" W. Cases come in 4 different lengths. (1) W. 4 sliding doors, overall dimensions 10' L x 7' H x 2' Deep. (1) W. 3 (34" W) doors, overall dimensions 9' L x 7' H x 2' Deep. (3) W. 2 sliding doors, overall dimensions 6' L x 7' H x 2' Deep. (1) X-Large w. 8 doors, overall dimensions 20' L x 7' H x 2' Deep.	Pakistan Pavilion 12:30PM-1:30PM After Fair by Appointment	- /Best Offer
No. D-10 / 2 LARGE DISPLAY CASES, white painted wood, glass front, overhead light. 66" high x 24" wide x 60" long.	Guinea Pavilion 11:30AM-9:00PM After Fair by Appointment	- /Best Offer
No. D-11 / 1 LARGE SHOWCASE COUNTER (IN 4 SECTIONS); the front & top of each section is plate glass built into finished pine and brass frame. Each section has double overhead fluorescent lights and measures: 5'2" L x 2' W x 3'2" H. Total length: 22'8".	Pakistan Pavilion 12:30PM-1:30PM After Fair by Appointment	- /Best Offer

# DISPLAY FIXTURES & COUNTERS

ITEM NO. / QUANTITY / DESCRIPTION	PAVILION & INSPECTION TIME	PRICE ORIGINAL / ASKING
No. D-12 / 1 SMALL SHOWCASE COUNTER, 3 sides glass w. wooden & brass frame, 6' L x 1'8" W x 3'4" H.	Pakistan Pavilion 12:30PM-1:30PM After Fair by Appointment	- /Best Offer
No. D-13 / 9 SMALL DISPLAY CASES, glass front and top. Panels and siding are white painted wood. 36" L x 12" W x 24" H.	Guinea Pavilion 11:30AM-9:00PM After Fair by Appointment	- /Best Offer
* No. D-14 / 6 MAHOGANY SHOWCASE STANDS, base of stand (18" L x 18" W x 26" H) made of laminated vertical strips of light mahogany, cases themselves are made of clear plastic sheets fused along their seams. 4 w. lg. cases - 30" L x 30" W x 30" H. 2 w. sm. cases - 30" L x 30" W x 13" H. ( Picture on page 24 )	Philippine Pavilion 10AM-6PM After Fair by Appointment	- /Best Offer
No. D-15 / 11 SMALL MAHOGANY DISPLAY CASES, made of laminated horizontal segments of light and dark mahogany. 7 cylindrical approx. 20" diam. 2 mushroom shaped 30" hgt. 2 cylinders cut obliquely	"	- /Best Offer
No. D-16 / 1 WOODEN STAND-UP DISPLAY CASE. W. OBLIQUE FACE, lift-up face hinged at back, three 3' sq. glass panels in white enameled wooden frame. Display area: 10' L x 3½' W x 2' H (at back) & 1' H (at front). Lighted by 3 overhead fluorescent lamps.	Pakistan Pavilion 12:30PM-1:30PM After Fair by Appointment	- /Best Offer
No. D-17 / small quantity ASSORTMENT OF SMALL DISPLAY CASES, mushroom-shaped and cylindrical stands; circular and triangular wall cases; all made of composite-board, with clear plastic facing.	American-Israel Pavilion 10AM-10PM After Fair by Appointment	- /Best Offer
No. D-18 / 1 ORIGINAL-DESIGN FOOD AND BEVERAGE DISPLAY, a mural is included in this section for no extra charge.	"	- /Best Offer

IMPORTANT! R E A D "INFORMATION REGARDING PURCHASE OF ITEMS" ON PG. SEVENTY NINE.

DISPLAY FIXTURES & COUNTERS

ITEM NO. / QUANTITY / DESCRIPTION	PAVILION & INSPECTION TIME	PRICE ORIGINAL / ASKING
No. D-19 / 1 FASHION AND APPAREL DISPLAY SECTION, specially designed.	American-Israel Pavilion 10AM-10PM After Fair by Appointment	- /Best Offer
No. D-20 / ONE UNUSUAL DISPLAY, 96" x 96" x 34". "Dynamic Maturity Offers You the Key."	Dynamic Maturity Pavilion 9AM-5PM After Fair 9AM-5PM	\$2,400 /Best Offer
No. D-21 / KEYS TO DYNAMIC MATURITY 72" x 96" x 60".	"	\$3,400 /Best Offer
No. D-22 / 1 KEYSTONES AARP PANEL	"	\$850 /Best Offer
* No. D-23 / 1 MASTERS KEYS DISPLAY, height 102" - width 48". ( Picture on page 24 )	"	\$3,500 /Best Offer
No. D-24 / 1 KEYSTONES NRTA PANEL 96" x 32" x 5".	"	\$850 /Best Offer
No. D-25 / 9 CHAPTER AREA DISPLAY PANELS 45" x 65" x 24"	"	\$2,200 /Best Offer each
* No. D-26 / 1 CHAPTER EXHIBIT ( Picture on page 24 )	"	\$2,500 /Best Offer
No. D-27 / 1 RETIREMENT RESEARCH and WELFARE PANEL 100" x 92" x 18"	"	\$750 /Best Offer
* No. D-28 / 1 PICTURE BOOTH (now used for serving tea) 7' x 70". ( Picture on page 24 )	"	\$1,200 /Best Offer
* No. D-29 / 5 INDIVIDUAL SERVICE DISPLAYS Health Institute of Lifetime Learning Legislation Communications At Home ( Picture on page 24 )	"	\$1,800 /Best Offer each

# DISPLAY FIXTURES & COUNTERS

ITEM NO. / QUANTITY / DESCRIPTION	PAVILION & INSPECTION TIME	PRICE ORIGINAL / ASKING
-----------------------------------	-------------------------------	----------------------------

No. D-30 / 1 SERVICE AREA HORSE SHOE  
COUNTER, 27' L x 15" W x 36" H.

Dynamic Maturity  
Pavilion  
9AM-5PM  
After Fair  
9AM-5PM

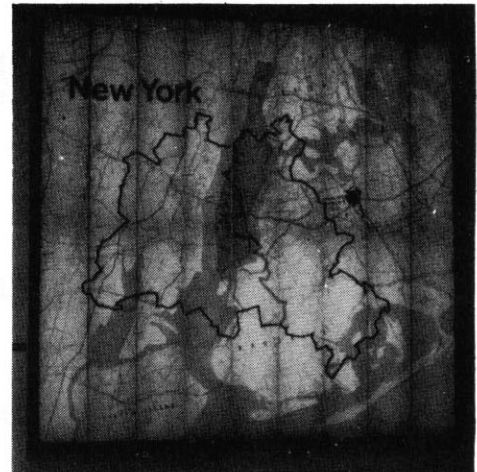
\$3,500 /Best Offer



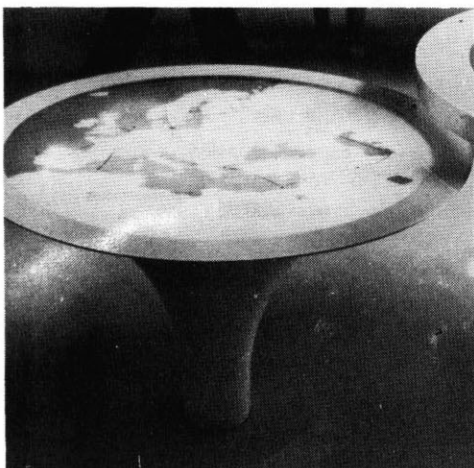
\* D-3



\* D-4



\* D-5



\* D-7



\* D-14



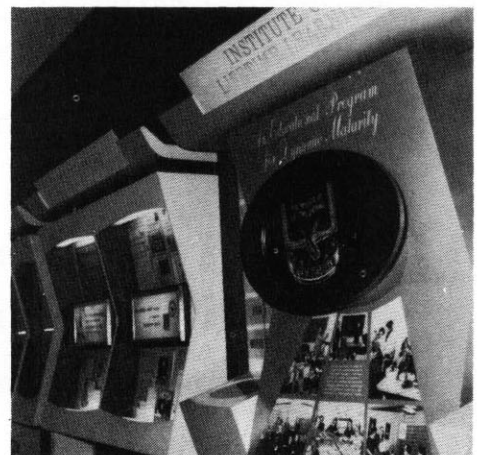
\* D-23



\* D-26



\* D-28 Page 24



\* D-29

# E L E C T R I C A L    E Q U I P M E N T

ITEM NO. / QUANTITY / DESCRIPTION	PAVILION & INSPECTION TIME	PRICE ORIGINAL / ASKING																		
No. E-1 / 1 FIVE KV PRIMARY COIL CIRCUIT BREAKER, "General Electric".	Philippine Pavilion 10AM-6PM After Fair by Appointment	- /Best Offer																		
No. E-2 / 1 HIGH POWER TRANSFORMER manufactured by Marcus Transformer Co., Inc. Conforms to NEMA, ASA, and ALEE specifications. Five energy levels:	Santa Maria Exhibit 9AM-11PM After Fair 8AM-6PM																			
<table> <tr> <th></th><th>VOLTS</th><th>AMPS</th></tr> <tr> <td>A</td><td>4368</td><td>5.94</td></tr> <tr> <td>B</td><td>4264</td><td>6.09</td></tr> <tr> <td>C</td><td>4160</td><td>6.24</td></tr> <tr> <td>D</td><td>4056</td><td>6.40</td></tr> <tr> <td>E</td><td>3952</td><td>6.58</td></tr> </table>		VOLTS	AMPS	A	4368	5.94	B	4264	6.09	C	4160	6.24	D	4056	6.40	E	3952	6.58		
	VOLTS	AMPS																		
A	4368	5.94																		
B	4264	6.09																		
C	4160	6.24																		
D	4056	6.40																		
E	3952	6.58																		
The reduced selling price of this item after December 1st must be checked with Mr. Lawrence Vinburgh at that time.		\$12,500/\$5,000																		
No. E-3 / 1 PAD MOUNTED TRANSFORMER, 112½ KVA, 2400/4160 x 120/208 volts, 3 phase 60 cycles, "General Electric" Cat. # FEA 7563.	Philippine Pavilion 10AM-6PM After Fair by Appointment	- /Best Offer																		
No. E-4 / 1 FIVE KV OUTDOOR SUBSTATION, 400 amp main line high voltage, all accompanying secondary switchgear to be sold (400 amp mains).	Montana Pavilion 9AM-5PM After Fair by Appointment	\$4,200 /\$500																		
No. E-5 / 1 TRANSFORMER, 112-1/2 KVA, 4160V, delta primary 208V, secondary coil, WYE, 3 phase 60 cycles.	"	\$6,500 /\$1,000																		
No. E-6 / 1 "NIAGARA" OIL TRANSFORMER, 150 KVA, input 4,160 volts - output 480Y-277 volts, 3 phases, total weight 2,620 lbs.	BFE, Incorporated 10AM-10PM After Fair 9AM-5PM by Appointment Only	- /Best Offer																		
No. E-7 / 3 "FEDERAL PACIFIC COMP." DRY TRANSFORMERS, type 9 KVA, 3 phases, 60 cycles, H. V. 480 volts, L. V. 208-120 volts.	"	- /Best Offer																		

## E L E C T R I C A L    E Q U I P M E N T

ITEM NO. / QUANTITY / DESCRIPTION	PAVILION & INSPECTION TIME	PRICE ORIGINAL / ASKING
No. E-8 / 1 "FEDERAL PACIFIC COMP." DRY TRANSFORMER, type 15 KVA. 3 phases, 60 cycles. H. V. 480 volts, L. V. 208-120 volts.	BFE, Incorporated 10AM-10PM After Fair 9AM-5PM by Appointment Only	- /Best Offer
No. E-9 / 3 MAIN SWITCHES, 3 poles, 30 amps., 440 volts.	"	- /Best Offer
No. E-10 / 1 FUSIBLE SAFETY SWITCH, single phase, 30 amps., Cat. #NR321.	Philippine Pavilion 10AM-6PM After Fair by Appointment	- /Best Offer
No. E-11 / 1 "GENERAL ELECTRIC" CIRCUIT BREAKER, with 11 switch from 15 amps., 1 from 20 amps.	BFE, Incorporated 10AM-10PM After Fair 9AM-5PM by Appointment Only	- /Best Offer
No. E-12 / 5 "FEDERAL PACIFIC COMP." SWITCH PANELS, 100 amps. 3 phases, 4 wire complete with 12 switch 15 amps.	"	- /Best Offer
No. E-13 / 1 MAIN SWITCH, 3 poles, 100 amps. 480 volts.	"	- /Best Offer

IMPORTANT! R E A D "INFORMATION REGARDING PURCHASE OF ITEMS" ON PG. SEVENTY NINE.

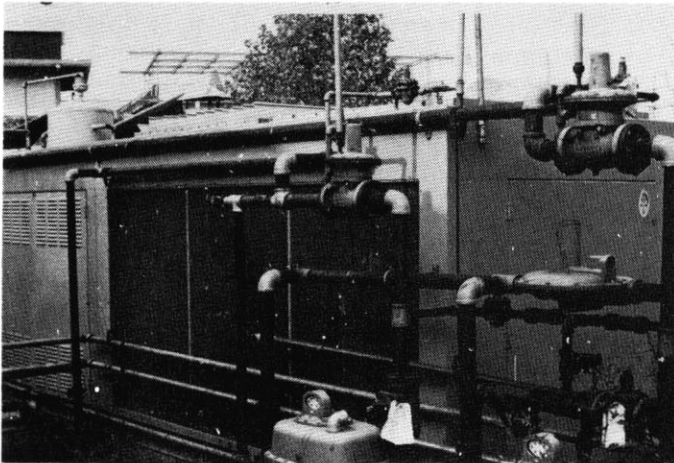


HEATING AND AIR CONDITIONING UNITS

ITEM NO. / QUANTITY / DESCRIPTION	PAVILION & INSPECTION TIME	PRICE ORIGINAL / ASKING
No. HE-1 / 2 TWENTY-FOUR TON AIR CONDITIONING UNITS, Make: Dunham-Busch, Model: G22DMC1, Serial #420. One used since beginning of fair, other unit has had test use only.	Log Flume Ride 9AM-5PM After Fair 9AM-5PM	- /Best Offer
* No. HE-2 / 1 FORTY TON AIR CONDITIONING UNIT, water cooled. ( Picture on page 28 )	Guinea Pavilion 11:30AM-9:00PM After Fair by Appointment	- /Best Offer
No. HE-3 / 1 HOT WATER HEATER, 6 gal. capacity, 1000 watts.	Philippines Pavilion 10AM-6PM After Fair by Appointment	- /Best Offer
No. HE-4 / 1 ELECTRIC HOT WATER HEATER, 30 gallon capacity.	Montana Pavilion 9AM-5PM After Fair by Appointment	- /Best Offer
* No. HE-5 / 1 THREE HUNDRED AND FIFTY-THREE GALLON WATER HEATER, Make A.O. SMITH - standard #5, B.T.U. hr. input 420,000. ( Picture on page 28 )	Guinea Pavilion 11:30AM-9:00PM After Fair by Appointment	- /Best Offer
No. HE-6 / 2 "RHEEM" GAS WATER HEATERS, type G-29/30, 30 gals., 36,000 BTU/HR.	BFE, Incorporated After Fair 9AM-5PM by Appointment Only	\$50.00 /Best Offer
No. HE-7 / 1 "TETER, INC." ELECTRIC WATER HEATER, type 12 gals., Model BS-12-S, 115 volts, 1,000 watts.	"	\$30.00 /Best Offer
No. HE-8 / 1 "BANTAN" ELECTRIC WATER HEATER, type 12 gals., 115 volts.	"	\$30.00 /Best Offer

ITEM NO. / QUANTITY / DESCRIPTION	PAVILION & INSPECTION TIME	PRICE	
		ORIGINAL /	ASKING
No. HE-9 / 1 "RUUD FLOATER" GAS WATER HEATER, Model 50-96, 50 gals.	BFE, Incorporated 10AM-10PM After Fair 9AM-5PM by Appointment Only	-	/Best Offer
No. HE-10 / 1 "WELBILT" AIR CONDITIONER- HEATER, 10,000 BTU.	Philippines Pavilion 10AM-6PM After Fair by Appointment	-	/Best Offer

IMPORTANT! R E A D "INFORMATION REGARDING PURCHASE OF ITEMS" ON PG. SEVENTY NINE.



\* HE-2



\* HE-5



## HOUSEHOLD FURNISHINGS &amp; ORNAMENTS

ITEM NO. / QUANTITY / DESCRIPTION	PAVILION & INSPECTION TIME	PRICE ORIGINAL / ASKING
<p>* No. HO-1 / 1 LARGE MAHOGANY CREDENZA WITH TWIN SHELF TABLES, 4-compartment dark mahogany credenza with facing of streaked light mahogany plaques. Plaques also serve as handles for opening compartments. This unit has two 19" L shelf tables attached at the bottom, on either end of the credenza. Overall dimensions of the unit: 69" L x 22" W x 32" H.</p>	<p>Philippine Pavilion 10AM-6PM After Fair by Appointment</p>	<p>- /Best Offer</p>
<p>* No. HO-2 / 3 BUFFALO HORN CHAIRS, unique dark hardwood chairs with cloth seats in a red, yellow and grey striped pattern, with a polished water-buffalo horn back rest. ( Picture on page 74 )</p>	<p>"</p>	<p>- /Best Offer</p>
<p>No. HO-3 / 1 LIGHT MAHOGANY REVOLVING TABLE WITH MOTHER OF PEARL INLAY, hand-worked conical base and trim. Diameter of table top 42"; diameter of inlay 38"; height 28"</p>	<p>"</p>	<p>- /Best Offer</p>
<p>* No. HO-4 / 2 LARGE HAMMERED-BRASS CIRCULAR COFFEE TABLES, removable top on tripod stand of finished hardwood, exquisite hand engraved Mughal design covers the entire face of the table. Size: 34" diameter x 3' H. ( Picture on page 74 )</p>	<p>Pakistan Restaurant 12:30PM-1:30PM After Fair by Appointment</p>	<p>- /\$70 each</p>
<p>No. HO-5 / 1 COFFEE TABLE WITH DARK WALNUT FINISH, 2" wide hardwood strips laminated together in a butcher block pattern, 4' L x 1'3" W x 1'6" H.</p>	<p>Pakistan Pavilion 12:30PM-1:30PM After Fair by Appointment</p>	<p>- /Best Offer</p>
<p>No. HO-6 / 2 COFFEE TABLES, rustic natural finish, made from 2" x 4" laminated timbers. Tables are 3' W x 6' L x 1½' H.</p>	<p>Montana Pavilion 9AM-5PM After Fair by Appointment</p>	<p>- /\$75 each</p>
<p>No. HO-7 / 2 WALNUT FINISHED STEP TABLES, laminated plastic tops, 24" L x 16" W x 22" H.</p>	<p>Pakistan Pavilion 12:30PM-1:30PM After Fair by Appointment</p>	<p>- /Best Offer</p>

ITEM NO. / QUANTITY / DESCRIPTION	PAVILION & INSPECTION TIME	PRICE ORIGINAL / ASKING
No. HO-8 / 1 FORMICA COFFEE TABLE, iron rod frame, 34" x 20", Color: cream.	Guinea Pavilion 11:30AM-9:00PM After Fair by Appointment	- /Best Offer
* No. HO-9 / 3 RUSTIC NATURAL FINISH TABLES made from 2" x 4" laminated timbers. Tables are 3' W x 6' L x 3' H. ( Picture on page 74 )	Montana Pavilion 9AM-5PM After Fair by Appointment	- /\$125 each
No. HO-10 / 3 LARGE WOODEN PLANTERS WITH ARTIFICIAL TROPICAL PLANTS, planter box: 44" L x 24" W x 18" H. Vines and plants extend to height of nine feet, color of planter box: medium blue.	Guinea Pavilion 11:30AM-9:00PM After Fair by Appointment	- /Best Offer
* No. HO-11 / 1 HANDWORKED ACACIA WOOD LAMP WITH SHELL INLAY, base made of dark acacia wood with unpolished shell inlaid in leaded square panels around the center of the base. Shade is rough linen on parchment. Lamp is 36" H x 6" Thick. ( Picture on page 74 )	Philippine Pavilion 10AM-6PM After Fair by Appointment	- /Best Offer
No. HO-12 / 1 SHELL & BRASS TABLE LAMP, Moro-design brass urn forms the base and leaded squares of opaque shell make up the shade in a startlingly unusual lamp. 34" H x 10" diameter.	"	- /Best Offer
No. HO-13 / 1 SMALL MODERN TABLE LAMP, orange plastic beehive base with walnut finished stem, 2'9" H x 8" diameter.	Pakistan Pavilion 12:30PM-1:30PM After Fair by Appointment	- /Best Offer
* No. HO-14 / 12 TRIBES PANELS: Each 34" high x 42" wide x 1/4" thick. Twelve sculptured plexiglass panels of different colors, depicting the traditional emblems of the 12 tribes. Designs follow the Twelve Tribes issue of Israel stamps. ( Picture on page 75 )	American-Israel Pavilion 10AM-10PM After Fair by Appointment	- /Best Offer

## HOUSEHOLD FURNISHINGS &amp; ORNAMENTS

ITEM NO. / QUANTITY / DESCRIPTION	PAVILION & INSPECTION TIME	PRICE ORIGINAL / ASKING
No. HO-15 / 1 RED & BLACK STRIPED SOFA, thick single foam rubber pad seat with foam rubber bolster cushions, contemporary style, base- 6' L x 1' H x 2½' Deep.	Pakistan Pavilion 12:30PM-1:30PM After Fair by Appointment	- /Best Offer
No. HO-16 / 2 ORIENTAL RUGS, Pakistani floral design on red background, 12' L x 9' W.	Pakistan Restaurant 12:30PM-1:30PM After Fair by Appointment	- /Best Offer
No. HO-17 / 7 ARTIFICIAL TROPICAL PLANTS, different types and sizes (up to six feet) in large and small piebald mahogany planters. Planters: 2 - large urn on square pedestal base 3 - small urn on square pedestal base 3 - small octagonal with brass strip binding.	Phillipine Pavilion 10AM-6PM After Fair by Appointment	- /Best Offer
No. HO-18 / 5 PLASTIC LAMINATE WALNUT WALL PANELS, 4' W x 8' H.	Pakistan Restaurant 12:30PM-1:30PM After Fair by Appointment	- /Best Offer
* No. HO-19 / 1 SMALL "ISLAND" REFRIGERATOR, 25" H x 20" W x 20" Deep; dark bronze enamel finish. ( Picture on page 75 )	Berlin Pavilion 10AM-10PM After Fair by Appointment	- /Best Offer
No. HO-20 / 1 KITCHEN COUNTER, wooden with formica top 70" long by 25" wide with a 4" border on top of the counter. It has three utensil drawers, two 17¼" long and one 24" long. Underneath this is two storage bins, one 35" and 24" wide.	"	- /Best Offer
No. HO-21 / 5 LOUVERED WOODEN PARTITION SCREENS with 4 hinged panels, each 84" H x 18" W.	Guinea Pavilion 11:30AM-9:00PM After Fair by Appointment	- /Best Offer

IMPORTANT! R E A D "INFORMATION REGARDING PURCHASE OF ITEMS" ON PG. SEVENTY NINE.

# KITCHEN UTENSILS

ITEM NO. / QUANTITY / DESCRIPTION	PAVILION & INSPECTION TIME	PRICE ORIGINAL / ASKING
No. K-1 / 50 dozen STAINLESS STEEL FLATWARE FORKS, Shasta pattern by Oneida.	NID of Thailand Pavilion 9AM-5PM After Fair 9AM-5PM	\$6.50 /Best Offer doz.
No. K-2 / 50 dozen STAINLESS STEEL FLATWARE TEASPOONS, Shasta pattern by Oneida.	"	\$3.85 /Best Offer doz.
No. K-3 / 24 dozen STAINLESS STEEL FLATWARE TEASPOONS, Shasta pattern by Oneida.	"	\$4.95 /Best Offer doz.
No. K-4 / 5 dozen STAINLESS STEEL FLATWARE ONE PIECE KNIVES, Shasta pattern by Oneida.	"	\$7.70 /Best Offer doz.
No. K-5 / 6 dozen STAINLESS STEEL DEMI- TASSE SPOONS, Monterey pattern.	"	\$2.90 /Best Offer doz.
No. K-6 / 100 IRON BAR-B-QUE RODS, 36" long.	Pakistan Restaurant 12:30PM-1:30PM After Fair by Appointment	- /Best Offer
No. K-7 / MISCELLANEOUS SMALL ITEMS, cups, dishes, plates, sugar bowls, place mats, silverware, ashtrays, etc.	Guinea Pavilion 11:30AM-9:00PM After Fair by Appointment	- /Best Offer
No. K-8 / 2 #2975 GARBAGE CANS, plastic, 6 gallon with covers.	NID of Thailand Pavilion 9AM-5PM After Fair 9AM-5PM	\$4.95 /Best Offer each

IMPORTANT! R E A D "INFORMATION REGARDING PURCHASE OF ITEMS" ON PG. SEVENTY NINE.

# L I G H T I N G   F I X T U R E S

ITEM NO. / QUANTITY / DESCRIPTION	PAVILION & INSPECTION TIME	PRICE ORIGINAL / ASKING
<p>No. L-1 / 2 LEADED SHELL HANGING LAMPS, unpolished opaque shell is set in lead framework to make up exciting overhead fixture.</p> <p>(a) Rectangular block shape - 12" H x 5" W</p> <p>(b) Teardrop shape - 16" H x 14" maximum diameter.</p>	<p>Philippine Pavilion 10AM-6PM After Fair by Appointment</p>	<p>- /Best Offer</p>
<p>* No. L-2 / 1 FLUORESCENT CEILING FIXTURE WITH GRID, 5' sq. contains 8 fluorescent lamps, covered with brass colored wooden grid and frosted plastic plate.</p> <p>( Picture on page 35 )</p>	<p>Pakistan Pavilion 12:30PM-1:30PM After Fair by Appointment</p>	<p>- /Best Offer</p>
<p>No. L-3 / 1 "KIM" 2-14 LV COLORSCOPE, up-lighting unit, 15" diameter with 2 lights 3" in diameter. Copper and bronze water proof construction</p>	<p>Philippine Pavilion 10AM-6PM After Fair by Appointment</p>	<p>- /Best Offer</p>
<p>No. L-4 / 2 "STONCO" #69901 42 L, high grade floodlights for high efficiency quartz iodine lamps. Lamps 500 and 150W. Automatic beam selector for narrow to wide beam. 9" L x 8" W x 10" H.</p>	<p>"</p>	<p>- /Best Offer</p>
<p>No. L-5 / 28 SWIVEL TYPE FLOODLIGHTS, 10" L x 6" diameter mounted on swivel, heavy duty base. Good general purpose lights, approximately 1000W.</p>	<p>"</p>	<p>- /Best Offer</p>
<p>No. L-6 - MANY FLOOD LAMPS, ETC.</p>	<p>BFE, Incorporated 10AM-6PM After Fair 9AM-5PM by Appointment Only</p>	<p>- /Best Offer</p>
<p>No. L-7 / 3 EXIT LIGHTS, red letters on a white background. Letters are 6" high and is a double faced sign. Sign 8" H x 10" L on a ceiling mount.</p>	<p>Philippine Pavilion 10AM-6PM After Fair by Appointment</p>	<p>- /Best Offer</p>

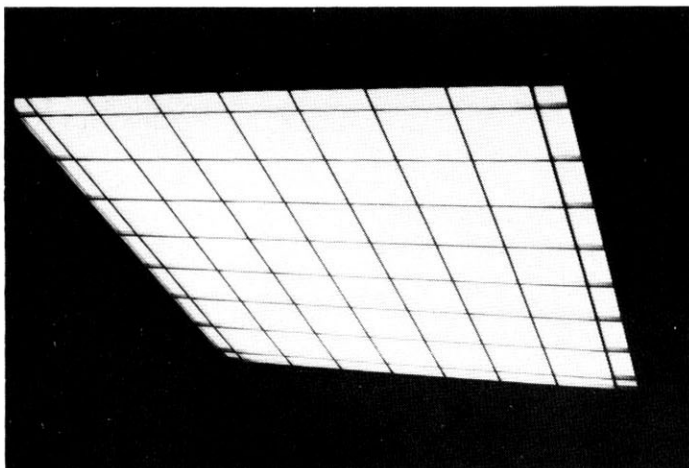
# L I G H T I N G   F I X T U R E S

ITEM NO. / QUANTITY / DESCRIPTION	PAVILION & INSPECTION TIME	PRICE ORIGINAL / ASKING
No. L-8 / 2 FLAG POLE LIGHTS, cylinder up-lights (10" diameter x 3' long) with 2 ten inch stems of brushed aluminum.	Philippine Pavilion 10AM-6PM After Fair by Appointment	- /Best Offer
No. L-9 / 12 "PRESCOLITE" B442, HEAVY DUTY SWIVEL LIGHTS for ceiling or wall use in satin finish. Mounts on 3½" or 4" outlet box, length is approximately 12", 150W.	"	- /Best Offer
No. L-10 / 30 "KURT VERSEN" MODEL 220-22 #F2, SQUARE OPAL DRUM LIGHT with brushed aluminum trim 9" sq. x 5½" deep.	"	- /Best Offer
No. L-11 / 28 "LIGHTOLIER" #136D07, SMALL DOUBLE LAMP 8" long of polished aluminum and both are movable.		- /Best Offer
No. L-12 / 2 "GOTHAM" FH1274, OPAL DRUM LIGHT 10" diameter x 4½" deep, satin chrome pan finish.	"	- /Best Offer
* No. L-13 / 12 "HABITAT" #5012, BLOWN OPAL BUBBLE 15" diameter with 3½' long chain with brushed aluminum mountings. ( Picture on page 35 )	"	- /Best Offer
No. L-14 / 3 "PRESCOLITE" WB2-2, 3" diameter x 4½" W x 14" L, extends 4½" from wall and is a tapering cylindrical wall lamp with satin chrome finished mountings	"	- /Best Offer
No. L-15 / 15 "PRESCOLITE" #7830 YELLOW DRUM LIGHTS, two 60W, 11" diameter x 6" deep. Featuring hand blown glass with Derlin louvers.	"	- /Best Offer
No. L-16 / MANY FLUORESCENT FIXTURES, from 8' and 4'.	BFE, Incorporated 10AM-10PM After Fair 9AM-5PM by Appointment Only	- /Best Offer

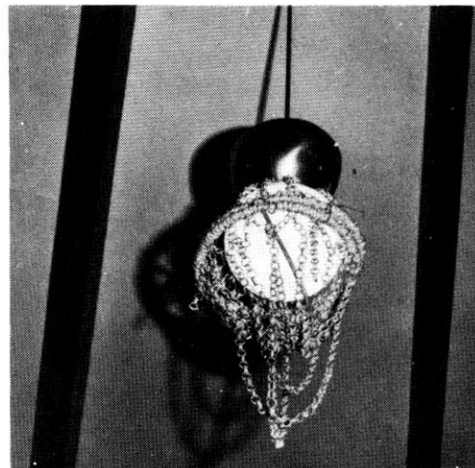
# LIGHTING FIXTURES

ITEM NO. / QUANTITY / DESCRIPTION	PAVILION & INSPECTION TIME	PRICE	
		ORIGINAL	ASKING
No. L-17 / ASSORTED LIGHTING FIXTURES, with conduits and wires.	Montana Pavilion 9AM-5PM After Fair by Appointment	-	/Best Offer
No. L-18 / 1 DOUBLE LAMP EMERGENCY LIGHTING UNIT.	Guinea Pavilion 11:30AM-9:00PM After Fair by Appointment	-	/Best Offer
No. L-19 / 2 McPHILBEN #93-35A NIGHT LIGHTS, 40W, diffusing glass, louvered guard.	Philippine Pavilion 10AM-6PM After Fair by Appointment	-	/Best Offer

IMPORTANT! R E A D "INFORMATION REGARDING PURCHASE OF ITEMS" ON PG. SEVENTY NINE.



\* L-2



\* L-13

ITEM NO. / QUANTITY / DESCRIPTION	PAVILION & INSPECTION TIME	PRICE ORIGINAL / ASKING
No. OFE-1 / 1 HOOVER VACUUM, upright. Model #913, Commercial #EE41302.	Hall of Free Enterprise 10AM-10PM After Fair by Appointment	\$115 /Best Offer
No. OFE-2 / 1 "HILD" WAXER-BUFFER-RUG SHAMPOO MACHINE with attachments, Model G, 60 cycles, 3/4 h. p.	"	\$310 /Best Offer
No. OFE-3 / 1 VACUUM CLEANER, Make: Hoover	Pakistan Restaurant 12:30-1:30PM After Fair by Appointment	- /Best Offer
No. OFE-4 / 1 SMALL RUG SHAMPOO MACHINE	"	- /Best Offer
No. OFE-5 / 1 MANUAL COMPUTER, adds - multiplies - subtracts, Make: Marchant, Model: "900", 12 column register, Color: beige.	"	\$235 /Best Offer
* No. OFE-6 / 1 "SCM" MANUAL COMPUTER, 12 column register; adds, multiplies, and subtracts, Color: slate blue. ( Picture on page 75 )	Guinea Pavilion 11:30AM-9:00PM After Fair by Appointment	- /Best Offer
* No. OFE-7 / 1 WATER COOLER, Make: General Electric, 14" wide x 41" high. ( Picture on page 75 )	Berlin Pavilion 10AM-10PM After Fair by Appointment	- /Best Offer
No. OFE-8 / 1 1964 TYPEWRITER, Make: Smith-Corona, Model: Pacemaker, Color: Light Grey.	American-Israel Pavilion 10AM-10PM After Fair by Appointment	- /Best Offer
* No. OFE-9 / 1 REMINGTON TYPEWRITER, 1964, Model: Standard. ( Picture on page 75 )	Guinea Pavilion 11:30AM-9:00PM After Fair by Appointment	- /Best Offer



# OFFICE EQUIPMENT

ITEM NO. / QUANTITY / DESCRIPTION	PAVILION & INSPECTION TIME	PRICE ORIGINAL / ASKING
No. OFE-10 / 1 VAC-A-BULB LAMP CHANGER, with extensions up to 15 feet.	Hall of Free Enterprise 10AM-10PM After Fair by Appointment	\$32.00 /Best Offer
No. OFE-11 / 2 "H-O-N" 24" FILE CABINETS, 18" wide x 54" high. 5 letter-size drawers. Color: light green	Guinea Pavilion 11:30AM-9:00PM After Fair by Appointment	- /Best Offer
No. OFE-12 / 1 "COLE" FILE CABINET, 16" deep x 30" wide x 36" high. 18 card-size drawers. Color: med. grey	"	- /Best Offer
No. OFE-13 / 1·4-DRAWER COMBINATION-LOCK FILE CABINET, steel construction, letter-size drawers, 4'4" H x 2'4" Deep x 15" W, Color: med. grey.	Pakistan Restaurant 12:30PM-1:30PM After Fair by Appointment	- /Best Offer
No. OFE-14 / 1 "HARRISON" 4-DRAWER LETTER FILE, Color: medium beige, steel construction, 52" H x 15" W x 27" Deep.	Pakistan Pavilion 12:30PM-1:30PM After Fair by Appointment	- /Best Offer
No. OFE-15 / 1 COMPACT 16" LETTER FILE, 2 locking drawers, steel construction, Color: canary yellow, 30" H x 18" W.	"	- /Best Offer
No. OFE-16 / 5 FILING CABINETS, all wood 16" wide by 25" long, inside are two shelves, Colors: 3 are green and 2 are blue.	Berlin Pavilion 10AM-10PM After Fair by Appointment	- /Best Offer
No. OFE-17 / 1·4-DRAWER LETTER-SIZE FILE CABINET, Make: Cole, steel construction, Color: metallic grey, 46" H x 16" W x 25" deep.	American-Israel Pavilion 10AM-10PM After Fair by Appointment	- /Best Offer
No. OFE-18 / 1·2-DRAWER FOLDER FILE, simulated walnut top, 17" W x 24" H x 20" deep.	"	- /Best Offer

# OFFICE EQUIPMENT

ITEM NO. / QUANTITY / DESCRIPTION	PAVILION & INSPECTION TIME	PRICE ORIGINAL / ASKING
* No. OFE-19 / 1 "STANDARD" COMBINATION-LOCK STEEL OFFICE SAFE, 18" x 20" x 24". Classification C., Color: med. grey ( Picture on page 75 )	Guinea Pavilion 11:30AM-9:00PM After Fair by Appointment	- /Best Offer
No. OFE-20 / 1 COMBINATION LOCK HEAVY DUTY STEEL SAFE, Make: Empire, 41" H x 25" W x 26" deep, Color: impenetrable grey	American-Israel Pavilion 10AM-10PM After Fair by Appointment	- /Best Offer
No. OFE-21 / 1 BIG SAFE, size 26" W x 28" Deep x 42" H.	BFE, Incorporated	- /Best Offer
No. OFE-22 / 6 SAND URNS, satin aluminum finish	Hall of Free Enterprise 10AM-10PM After Fair by Appointment	\$18 ea./Best Offer
No. OFE-23 / 1-6' MAGNESIUM STEP LADDER	"	\$20.00 /Best Offer
No. OFE-24 / 1-4' x 15' SAFETY RIB RUBBER MATTING, Color: beige, 1/4 thick	"	\$105. /Best Offer
No. OFE-25 / 1-4' x 18' SAFETY RIB RUBBER MATTING, Color: beige, 1/4 thick	"	\$105. /Best Offer
No. OFE-26 / 1 "ELKHART" HAND FIRE EXTINGUISHER, tested to 500 lbs., extinguishing agent: soda & acid.	Philippine Pavilion 10AM-6PM After Fair 9AM-5PM	- /Best Offer

IMPORTANT! R E A D "INFORMATION REGARDING PURCHASE OF ITEMS" ON PG. SEVENTY NINE.

# OFFICE FURNITURE

ITEM NO. / QUANTITY / DESCRIPTION	PAVILION & INSPECTION TIME	PRICE ORIGINAL / ASKING	
No. OFF-1 / 2 JR. EXECUTIVE DESKS WITH SIMULATED WALNUT TOPS, steel frame, color: light beige, 52" L x 24" W x 25" H.	American-Israel Pavilion 10AM-10PM After Fair by Appointment	-	/Best Offer
No. OFF-2 / 1 LIGHT OAK SECRETARIAL DESK, coated plastic finish, 1/4" plate glass topping, 52" x 30" x 30".	Pakistan Pavilion 12:30AM-1:30PM After Fair by Appointment	-	/Best Offer
No. OFF-3 / 7 BEIGE LINOLEUM-TOP JR. EXECUTIVE DESKS, enameled gold steel frame, with three 6" high drawers, 4 1/2' x 2' x 2'.	"	-	/Best Offer
No. OFF-4 / 1 BEIGE CONFERENCE DESK, linoleum top, gold enameled steel frame, 7 drawers with locking center drawer. 6' x 3' x 2 1/2'.	"	-	/Best Offer
No. OFF-5 / 4 "H-O-N" SECRETARIAL DESKS 60" L x 24" W x 30" H. Steel with formica top, typing shelf on right hand side, color: light green.	Guinea Pavilion 11:30AM-9:00PM After Fair by Appointment	-	/Best Offer
No. OFF-6 / 1 SINGLE PEDESTAL DESK, all wood with center, utility and file drawer. 48" x 24".	Berlin Pavilion 10AM-10PM After Fair by Appointment	-	/Best Offer
No. OFF-7 / 1 JR. EXECUTIVE DESK, simulated walnut plastic laminate top, black enameled steel frame, 5 drawers (with locking file drawer), 54" x 24" x 30".	Pakistan Restaurant 12:30PM-1:30PM After Fair by Appointment	\$60	/Best Offer
No. OFF-8 / 1 ROUND WALNUT COFFEE TABLE for reception room or home use, 3' diameter, 15" H.	Hall of Free Enterprise 10AM-10PM After Fair by Appointment	\$45	/Best Offer
No. OFF-9 / 1 WALNUT CORNER TABLE, suitable for reception room or home use, 2'5" square.	"	\$35	/Best Offer

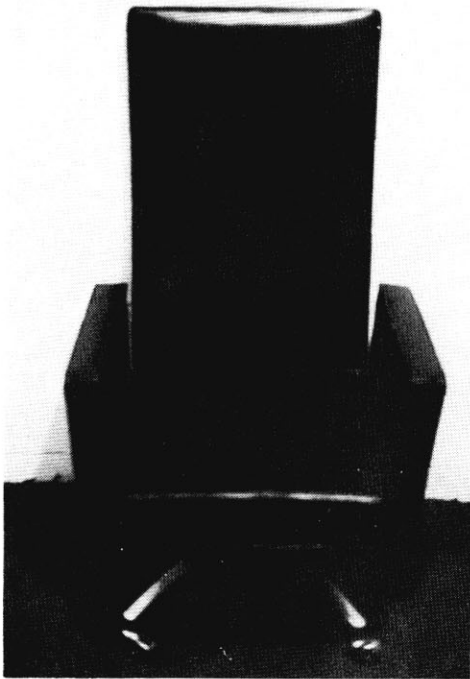
OFFICE FURNITURE

ITEM NO. / QUANTITY / DESCRIPTION	PAVILION & INSPECTION TIME	PRICE ORIGINAL / ASKING
No. OFF-10 / 1 MODERN EXECUTIVE SWIVEL CHAIR, black leatherette with hardwood armrests.	Pakistan Restaurant 12:30PM-1:30PM After Fair by Appointment	- /Best Offer
* No. OFF-11 / 2 HIGH BACK EXECUTIVE SWIVEL CHAIRS, upholstered black leatherette with steel frame.	Guinea Pavilion 11:30AM-9:00PM After Fair by Appointment	- /Best Offer
No. OFF-12 / 1 "H-O-N" SECRETARIAL CREDENZA, 48" x 20" x 32". Black painted steel with brown formica top.	"	- /Best Offer
* No. OFF-13 / 35 GRAY PLASTIC STACK CHAIRS, with sturdy tube-metal legs. Chairs may be used individually or hooked together to form rows. Light-weight, easily stored.	Hall of Free Enterprise 10AM-10PM After Fair by Appointment	\$25.00 /Best Offer each
No. OFF-14 / 12 FORM-FITTING FIBERGLASS CHAIRS, armless, contemporary design. Color: mottled white, frame: gold enameled steel.	Pakistan Pavilion 12:30PM-1:30PM After Fair by Appointment	- /Best Offer
No. OFF-15 / 3 CHROME PLATED CONTEMPORARY ARM CHAIRS, upholstered seat and back covered with gray vinyl.	"	- /Best Offer
No. OFF-16 / 1 GREEN LEATHERETTE SECRETARIAL SWIVEL CHAIR, with heavy duty steel frame.	"	- /Best Offer
No. OFF-17 / 2 DESERT TAN SIDE CHAIRS, steel frame (color: metallic gold), upholstered in vinyl.	American-Israel Pavilion 10AM-10PM After Fair by Appointment	- /Best Offer
No. OFF-18 / 1 SECRETARIAL CHAIR, steel frame with green vinyl covering.	Guinea Pavilion 10AM-9PM After Fair by Appointment	- /Best Offer

O F F I C E F U R N I T U R E

ITEM NO. / QUANTITY / DESCRIPTION	PAVILION & INSPECTION TIME	PRICE ORIGINAL / ASKING
No. OFF-19 / 2 SECRETARIAL SWIVEL CHAIRS, steel frame with green vinyl covering.	Guinea Pavilion 10AM-9PM After Fair by Appointment	- /Best Offer
No. OFF-20 / 2 LOUNGE CHAIRS, upholstered black vinyl with metal frame.	"	- /Best Offer
No. OFF-21 / 1 DESERT TAN EXECUTIVE SWIVEL CHAIR, steel frame with leatherette covering.	American-Israel Pavilion 10AM-10PM After Fair by Appointment	- /Best Offer
No. OFF-22 / 1 CHROME PLATED EXECUTIVE SWIVEL CHAIR, contemporary design, upholstered seat and back covered with gray vinyl.	Pakistan Pavilion 12:30PM-1:30PM After Fair by Appointment	- /Best Offer
No. OFF-23 / 18 LARGE CYLINDRICAL METAL ASHTRAYS, color: dark brown, 20" H x 10" diameter.	"	- /Best Offer
No. OFF-24 / 4 BRASS ALLOY COAT TREES 5¼' high.	"	- /Best Offer
No. OFF-25 / 1 SMALL FRAMELESS MIRROR 2' L x 1½' H.	"	- /Best Offer
No. OFF-26 / 3 BRUSHED ALUMINUM ELECTRIC WALL CLOCKS, 24" diameter face, Make: Elgin.	"	- /Best Offer
No. OFF-27 / 1 Pr. SILK ACETATE-RAYON DRAPES, rich shades of orange and gold form horizontal stripes.	Hall of Free Enterprise 10AM-10PM After Fair by Appointment	\$150 /Best Offer

ITEM NO. / QUANTITY / DESCRIPTION	PAVILION & INSPECTION TIME	PRICE ORIGINAL / ASKING
No. OFF-28 / 1 Pr. GOLD GLASS BOUCLE CURTAINS, pinch pleated curtains and draperies with center opening, traverse rods made for window 12' wide, 95" long.	Hall of Free Enterprise 10AM-10PM After Fair by Appointment	\$120 /Best Offer
No. OFF-30 / 2 GRAY STEEL LOCKER UNITS with six lockers in each. Individual lockers measure 1' wide, 1½' deep, 3' high. Overall dimensions of each unit: 3' x 3' x 6' x 1½' deep. Master padlock and keys for each locker.	"	\$78.00 /Best Offer each



\* OFE-11



\* OFE-13

IMPORTANT! R E A D "INFORMATION REGARDING PURCHASE OF ITEMS" ON PG. SEVENTY NINE.

# OUTDOOR FIXTURES

ITEM NO. / QUANTITY / DESCRIPTION	PAVILION & INSPECTION TIME	PRICE ORIGINAL / ASKING
<p>* No. OUF-1 / 1 MOVABLE JACK FENCE, surface-mounted, self-supporting, pre-cut in 10' sections, assembled with bolts, 5" rails; would make very decorative yard fence. Can be divided into 100' units that include gates and two lighted signboards. ( Picture on page 75 )</p>	<p>Montana Pavilion 9AM-5PM After Fair by Appointment</p>	<p>- /\$300 for 400 feet - /\$100 for 100 feet</p>
<p>No. OUF-2 / 300' HEAVY DUTY BOARDWALK, 8' W x 4' L prefab paneling as sub floor, superstructure and cross members are roughcut 2" x 12" planks. Several thousand feet of salvageable planking and decking in this structure.</p>	<p>"</p>	<p>- /\$100</p>
<p>No. OUF-3 / 4 PYRAMIDAL-SHAPED CANVAS CANOPIES, cut in triangular pattern to imitate far eastern bazaar, color: green &amp; white, each canopy is 144 sq. ft.</p>	<p>Pakistan Restaurant 12:30PM-1:30PM After Fair by Appointment</p>	<p>- /\$2,700</p>
<p>No. OUF-4 / 4 "ARABIAN NIGHTS" CANOPIES, intricate design on multi-colored background, used as ornamental undercoating for canvas awning, ties into pyramidal frame with eyelets every 10", each canopy is 144 sq. ft.</p>	<p>"</p>	<p>- /\$ 90 each \$340 for all</p>
<p>No. OUF-5 / 1 CANVAS ROOF (10' W x 47' L), with steel frame support. Ideal covering for exposed areas or sequestered nooks.</p>	<p>Chunky Corp. Pavilion 10AM-10PM After Fair by Appointment</p>	<p>- /Best Offer</p>
<p>No. OUF-6 / 31 MODERNISTIC ACACIA-WOOD ROPE STANCHIONS, movable, made of laminated vertical strips of acacia-wood, 30" H.</p>	<p>Philippine Pavilion 10AM-6PM After Fair by Appointment</p>	<p>- /Best Offer</p>
<p>No. OUF-7 / 1 BRUSHED ALUMINUM FLAG POLE, approximately 50' high.</p>	<p>Pakistan Pavilion 12:30PM-1:30PM After Fair by Appointment</p>	<p>- /Best Offer</p>

# OUTDOOR FIXTURES

ITEM NO. / QUANTITY / DESCRIPTION	PAVILION & INSPECTION TIME	PRICE ORIGINAL / ASKING
No. OUF-8 / 1 METAL FLAGPOLE, brushed aluminum, 45' H x 16" diameter, Make: American Flagpole Equipment Co.	Guinea Pavilion 11:30AM-9:00PM After Fair by Appointment	- /Best Offer
No. OUF-9 / Large quantity "PEREY" TURNSTILES, "LAWRENCE" stanchions and rope.	BFE, Incorporated 10AM-10PM After Fair 9AM-5PM by Appointment Only	- /Best Offer
No. OUF-10 / 4 "PEREY" COIN OPERATED TURNSTILES, with register.	Guinea Pavilion 11:30AM-9:00PM After Fair by Appointment	- /Best Offer
No. OUF-11 / 11 "PEREY" TURNSTILES, non-coin type with built-in register - two-way operation.	Bell Telephone Pavilion 9AM-5PM After Fair 9AM-5PM	\$350 /Best Offer each
No. OUF-12 / Approximately 200' GALVANIZED 1" THICK STEEL CHAIN with 3' STANCHIONS. There are approximately 34 stanchions with the chain.	Pakistan Pavilion 12:30PM-1:30PM After Fair by Appointment	- /Best Offer
No. OUF-13 / 1 MAHOGANY FINISHED INFORMATION BOOTH, sheet plywood construction, open horse-shoe shaped booth covered by roof, 40" H (to top of counter) x 18½' outer perimeter x 12' across.	Philippine Pavilion 10AM-6PM After Fair by Appointment	- /Best Offer
No. OUF-14 / 2 ORNAMENTAL WOODEN BRIDGES, 3' span, 4' high at apex. Color: Dark brown.	Guinea Pavilion 11:30AM-9:00PM After Fair by Appointment	- /Best Offer
No. OUF-15 / 48 OUTDOOR TABLES W/UMBRELLAS AND SPRING CUSHION CHAIRS	Greer Marechal Bar Building 30 W. 44th St.	- /Best Offer



# PAINTINGS & OBJECTS OF ART

ITEM NO. / QUANTITY / DESCRIPTION	PAVILION & INSPECTION TIME	PRICE ORIGINAL / ASKING
* No. PA-1 / 2 ANTIQUE-SILVER STATUES, 1 of St. Thomas, 1 of St. Domingo. Both 22" high, 18th century. ( Picture on page 75 )	Spanish Pavilion 10AM-10PM After Fair by Appointment	- \$5,795. / each.
No. PA-2 / 1 MADONNA AND CHILD, 14th CENTURY SCULPTED WOODEN STATUE, 43" high.	"	- /\$2,200
* No. PA-3 / 1 CONTEMPORARY STATUE IN LIGHT MAHOGANY, human figure simplified to the point of abstraction, 34" tall. ( Picture on page 75 )	Philippine Pavilion 10AM-6PM After Fair by Appointment	- /Best Offer
* No. PA-4 / 10 ORIGINAL CONTEMPORARY OIL PAINTINGS, by leading Pakistani artists, PORTRAITS, FIGURES, LANDSCAPES, & ABSTRACTIONS. ( Picture on page 75 & 76 )	Pakistan Pavilion 12:30 PM-1:30PM After Fair by Appointment	- \$100. to / \$500.
No. PA-5 / 3 MODERN PAINTINGS BY OUTSTANDING PHILIPPINO ARTISTS , two abstractions, one harvest scene, all done in oils, all medium sized, suitable for hanging in the home.	Philippine Pavilion 10AM-6PM After Fair by Appointment	- /Best Offer
No. PA-6 / 1 LARGE BRONZE MENORAH, of a unique "Flaming Bush" design.	American-Israel Pavilion 10AM-10PM After Fair by Appointment	- /Best Offer
* No. PA-7 / 1 ANTIQUE BRASS PEACOCK ON SCULPTED BRASS COLUMN, exquisite Moro craftsmanship displayed at its best in this 5' high piece. (There is also an identical sculpted column available without the peacock - 42" H.) ( Picture on page 76 )	Philippine Pavilion 10AM-6PM After Fair by Appointment	- /Best Offer
* No. PA-8 / 1 SIXTEENTH CENTURY PAINTED WOOD SCULPTURE OF THE VIRGIN, 47" high. ( Picture on page 76 )	Spanish Pavilion 10AM-10PM After Fair by Appointment	- /\$11,590

ITEM NO. / QUANTITY / DESCRIPTION	PAVILION & INSPECTION TIME	PRICE ORIGINAL / ASKING
No. PA-9 / 1 FOURTEENTH CENTURY WOODEN STATUE OF A SAINT, 32" high.	Spanish Pavilion 10AM-10PM After Fair by Appointment	- /\$2,318
* No. PA-10 / 1 WOODEN SCULPTURE OF ST. JAMES (18th century), 35" high. (Picture on page 76 )	"	- /\$2,318
* No. PA-11 / 1 EIGHTEENTH CENTURY BAROQUE PILLAR, w. grapevine design in relief, 32" high. ( Picture on page 76 )	"	- /\$167.00
* No. PA-12 / 1 EIGHTEENTH CENTURY GOLDEN SOLOMONIC (SPIRAL) PILLAR, 24" high. ( Picture on page 76 )	"	- /\$167.00
* No. PA-13 / 2 EIGHTEENTH CENTURY GOLDEN SOLOMONIC (SPIRAL) PILLARS, 43" high. ( Picture on page 76 )	"	- /\$187 each
* No. PA-14 / 2 EIGHTEENTH CENTURY GOLDEN SOLOMONIC (SPIRAL) PILLARS, 39" high. ( Picture on page 76 )	"	- /\$235 each
* No. PA-15 / 2 EIGHTEENTH CENTURY GOLDEN SOLOMONIC (SPIRAL) PILLARS, 49" high. ( Picture on page 76 )	"	- /\$335 each
* No. PA-16 / 2 SEVENTEENTH CENTURY BIG SOLOMONIC (SPIRAL) PILLARS, 71" high. ( Picture on page 76 )	"	- /\$600 each
* No. PA-17 / 2 SIXTEENTH CENTURY SOLOMONIC (SPIRAL) PILLARS, CORINTHIAN CAPITAL, 55" high. ( Picture on page 76 )	"	- /\$300 each
* No. PA-18 / 1 SEVENTEENTH CENTURY WHITE AND BLUE IONIC PILLAR, 71" high. ( Picture on page 76 )	"	- /\$500
* No. PA-19 / 2 SIXTEENTH CENTURY BLATERESQUE PILLARS, 47" high. ( Picture on page 76 )	"	- /\$400 each
* No. PA-20 / 1 SIXTEENTH CENTURY POLYCHROMATIC PILLAR, 52" high. ( Picture on page 76 )	"	- /\$335

ITEM NO. / QUANTITY / DESCRIPTION	PAVILION & INSPECTION TIME	PRICE ORIGINAL / ASKING
* No. PA-21 / 1 SEVENTEENTH CENTURY GOLDEN AND RED PILLAR, 49" high. ( Picture on page 76 )	Spanish Pavilion 10AM-10PM After Fair by Appointment	- /\$200
* No. PA-22 / 1 EIGHTEENTH CENTURY GOLDEN PILLAR, 49" high. ( Picture on page 76 )	"	- /\$400
* No. PA-23 / 1 SEVENTEENTH CENTURY BAROQUE PILLAR, 53" high. ( Picture on page 76 )	"	- /\$335
* No. PA-24 / 1 EIGHTEENTH CENTURY GOLDEN BAROQUE PILLAR, 42" high. ( Picture on page 76 )	"	- /\$184
* No. PA-25 / 2 SMALL SIXTEENTH CENTURY PILLARS, Corinthian style, 20" high. ( Picture on page 76 )	"	- /\$184 each
* No. PA-26 / 1 Twenty-one Foot Long by Six Feet High by One Foot Thick FREE-FORM WOODEN WINDSCREEN, made up of hundreds of oddly shaped pieces of vari-colored hard- woods. Disassembles into four sections, each 64" L. ( Picture on page 76 )	Philippine Pavilion 10AM-6PM After Fair by Appointment	- /Best Offer
* No. PA-27 / 1 group FAMILY OF THE FUTURE, group of 5 statues done in contemporary monument style from an extremely rough textured black stone. The group takes up an area 5' L x 3' W and its tallest member is 5' high. ( Picture on page 76 )	"	- /Best Offer

IMPORTANT! R E A D "INFORMATION REGARDING PURCHASE OF ITEMS" ON PG. SEVENTY NINE.

# P L U M B I N G   E Q U I P M E N T

ITEM NO. / QUANTITY / DESCRIPTION	PAVILION & INSPECTION TIME	PRICE	
		ORIGINAL	ASKING
No. PL-1 / 1 DRINKING FOUNTAIN, "General Electric" Model PF11.	Philippines Pavilion 10AM-6PM After Fair by Appointment	-	/Best Offer
No. PL-2 / 1 DRINKING FOUNTAIN.	Montana Pavilion 9AM-5PM After Fair by Appointment	-	/Best Offer
No. PL-3 / 1 HP FOUNTAIN PUMP, 115/230V 1 phase, "Pacific Pump Company," Type LRU.	Philippines Pavilion 10AM-6PM After Fair by Appointment	-	/Best Offer
No. PL-4 / 1 TWO-HP FOUNTAIN PUMP, 115/230V 1 phase, "Pacific Pump Company," Type L.	"	-	/Best Offer
No. PL-5 / 1 WATER METER.	Montana Pavilion 9AM-5PM After Fair by Appointment	-	/Best Offer
No. PL-6 / 4 METAL SHOWER STALLS.	"	-	/Best Offer
No. PL-7 / 3 METAL TOILET PARTITIONS WITH DOORS.	"	-	/Best Offer
No. PL-8 / 4 LAVATORY SINKS.	"	-	/Best Offer
No. PL-9 / 3 TOILET BOWLS.	"	-	/Best Offer
No. PL-10 / Small Quan. MISCELLANEOUS PIPE, ETC.	"	-	/Best Offer
No. PL-11 / 1 FIVE HUNDRED & SEVENTY-SIX GALLON WATER STORAGE TANK, steel, Make: Old Dominion Iron and Steel Corp.	Guinea Pavilion 11:30AM-9:00PM After Fair by Appointment	-	/Best Offer

# P L U M B I N G   E Q U I P M E N T

ITEM NO. / QUANTITY / DESCRIPTION	PAVILION & INSPECTION TIME	PRICE ORIGINAL / ASKING
No. PL-12 / 1 ONE/TWELVE hp AC MOTOR, Make: Bell & Gosset.	Guinea Pavilion 11:30AM-9:00PM After Fair by Appointment	- /Best Offer
No. PL-13 / 1 "WORTHINGTON" MONOBLOC PUMP, 5 hp. type P.	"	- /Best Offer

IMPORTANT! R E A D "INFORMATION REGARDING PURCHASE OF ITEMS" ON PG. SEVENTY NINE.

## RESTAURANT DINING ROOM EQUIPMENT

ITEM NO. / QUANTITY / DESCRIPTION	PAVILION & INSPECTION TIME	PRICE ORIGINAL / ASKING
<p>* No. RD-1 / 20 WALNUT (SIMULATED) DINING TABLES, with single metal column support. Three different sizes: 3' x 3' 3' x 2' 2' x 3½'</p> <p>( Picture on page 53 )</p>	<p>Pakistan Restaurant 12:30PM-1:30PM After Fair by Appointment</p>	<p>- /Best Offer</p>
<p>No. RD-2 / 25 FABRICATED GLASSWELD GOLD TABLES, 32" x 32", special bases, for outdoor and indoor use. All reinforced in stainless steel trim.</p>	<p>NID of Thailand Pavilion 9AM-5PM After Fair 9AM-5PM</p>	<p>\$24.22 /Best Offer each</p>
<p>* No. RD-3 / 4 FABRICATED GLASSWELD GOLD TABLES, 32" x 42", special bases, for outdoor and indoor use. All reinforced in stainless steel trim.</p> <p>( Picture on page 53 )</p>	<p>"</p>	<p>\$28.15 /Best Offer each</p>
<p>* No. RD-4 / 67 LARGE TUFTED LEATHERETTE DINING ROOM CHAIRS, dark mahogany finish, contemporary style, color: half of them are crimson, half are mauve.</p> <p>( Picture on page 53 )</p>	<p>Pakistan Restaurant 12:30PM-1:30PM After Fair by Appointment</p>	<p>\$42 /Best Offer each</p>
<p>* No. RD-5 / 18 FABRICATED GLASSWELD GOLD TABLES, 24" x 32", special bases, for outdoor and indoor use. All reinforced in stainless steel trim.</p> <p>( Picture on page 53 )</p>	<p>NID of Thailand Pavilion 9AM-5PM After Fair 9AM-5PM</p>	<p>\$22.22 /Best Offer each</p>
<p>* No. RD-6 / 384 sq. ft. ORIENTAL GRILL SCREEN WITH MUGHAL ARCH OVERLAY, color- white &amp; gold, construction- coated wood and plastic composite (heavy duty).</p> <p>( Picture on page 53 )</p>	<p>Pakistan Restaurant 12:30PM-1:30PM After Fair by Appointment</p>	<p>- /Best Offer</p>
<p>No. RD-7 / 9 VERTICAL PARTITIONING SCREENS, single-sheet plastic, Chinese light green bamboo pattern, 10' H x 3'6" W.</p>	<p>Guinea Pavilion 11:30AM-9:00PM After Fair by Appointment</p>	<p>- /Best Offer</p>
<p>No. RD-8 / 5 VERTICAL PARTITIONING SCREENS, single-sheet plastic, muted blue and brown striped pattern. 12' H x 3'6" W.</p>	<p>"</p>	<p>- /Best Offer</p>

## RESTAURANT DINING ROOM EQUIPMENT

ITEM NO. / QUANTITY / DESCRIPTION	PAVILION INSPECTION TIME	PRICE ORIGINAL / ASKING
No. RD-9 / 175-200 CUSHIONS FOR FOLDING CHAIRS.	NID of Thailand Pavilion 9AM-5PM After Fair 9AM-5PM	85¢ each/Best Offer
No. RD-10 / 12 BAR STOOLS, 6 Bayberry Green and 6 Bittersweet Red.	"	- /Best Offer
No. RD-11 / 3 SERVING STANDS, white pine with color matched formica top, removable silverware tray. 28" L x 18" W x 36" H.	Guinea Pavilion 11:30AM-9:00PM After Fair by Appointment	- /Best Offer
No. RD-12 / 2 TWO FOOT LONG COCKTAIL STATIONS.	NID of Thailand Pavilion 9AM-5PM After Fair 9AM-5PM	- /Best Offer
* No. RD-13 / 175-200 FOLDING CHAIRS. ( Picture on page 53 )	"	\$8.91 each /Best Offer
No. RD-14 / 1 LARGE PLANTER DIVIDER, dark oak plastic laminate finish, 5' L x 1' W x 3' H.	Pakistan Restaurant 12:30PM-1:30PM After Fair by Appointment	- /Best Offer
No. RD-15 / 4 LOUNGE CHAIRS, wicker back, iron rod frame, cloth cushions in blue and green floral print.	Guinea Pavilion 11:30AM-9:00PM After Fair by Appointment	- /Best Offer
No. RD-16 / 1 COIN COUNTER AND PACKAGER, Make: Brandt. Steel construction, Color - metallic grey.	American-Israel Pavilion 10AM-10PM After Fair by Appointment	- /Best Offer
No. RD-17 / 1 "NCR" CASH REGISTER, Model #1944 (53-1B)	Guinea Pavilion 11:30AM-9:00PM After Fair by Appointment	- /Best Offer

# RESTAURANT DINING ROOM EQUIPMENT

ITEM NO. / QUANTITY / DESCRIPTION	PAVILION & INSPECTION TIME	PRICE ORIGINAL / ASKING
No. RD-18 / 1 SMALL BAR & COUNTER, durable plastic laminate finish (dark oak paneling with ivory white counter). Ice cube sink and underlying work counter. Overall dimensions: 7'L x 1½' W x 4' H.	Pakistan Restaurant 12:30PM-1:30PM After Fair by Appointment	- /Best Offer
* No. RD-19 / 1 BLACK AND ORANGE BAR, 18' long, with flap on the right side with a 6' left return. Bar top is formica, with black Hollywood rail and two Radius corners. Front has upholstered panels in orange on a black formica background. Brass Rosette in center of upholstered panel. Body has square corners with black linoleum footstep and a Brass nosing. Back bar has a 3-door refrigerator, with galvanized lining, blower and compressor, with lock cabinets on each side. Upper section has wood spindle door cabinets on each side and plain mirrors in center and 3' step display all in black formica. ( Picture on page 53 )	NID of Thailand Pavilion 9AM-5PM After Fair 9AM-5PM	- /Best Offer
No. RD-20 / Large quantity DOORS, WINDOWS, COUNTERS.	BFE, Incorporated 10AM-10PM After Fair 9AM-5PM by Appointment Only	- /Best Offer
No. RD-21 / Large quantity TABLES, CHAIRS, UMBRELLAS, BAR STOOLS (wood and steel).	"	- /Best Offer
No. RD-22 / Large quantity EXTRA-HEAVY JUTE CARPETING, Color- straw yellow	Pakistan Restaurant 12:30PM-1:30PM After Fair by Appointment	- /Best Offer
No. RD-23 / 24 MOVABLE STANCHIONS in black	NID of Thailand Pavilion 9AM-5PM After Fair 9AM-5PM	\$9.00 /Best Offer each



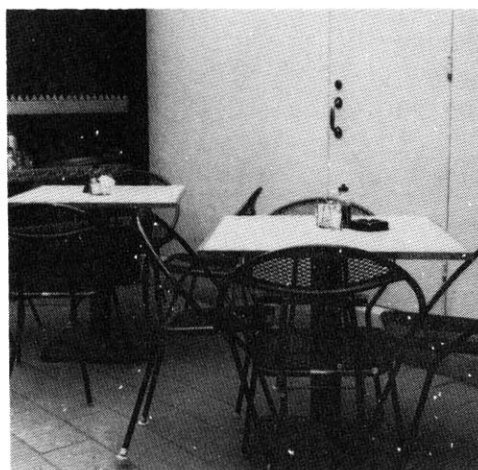
# RESTAURANT DINING ROOM EQUIPMENT

ITEM NO. / QUANTITY / DESCRIPTION	PAVILION & INSPECTION TIME	PRICE ORIGINAL / ASKING
No. RD-24 / Large quantity IVORY-WHITE PLASTIC LAMINATE RESTAURANT TABLES, black iron rod frame. These tables come in 3 sizes: a) 2' sq. b) 3' sq. c) 2' in diam.	Guinea Pavilion 11:30AM-9:00PM After Fair by Appointment	- /Best Offer
No. RD-25 / Large quantity WICKER BACK DINING ROOM CHAIRS, blue & green canvass covered seats in a tropical floral pattern; iron rod frame. Height: 30".	"	- /Best Offer

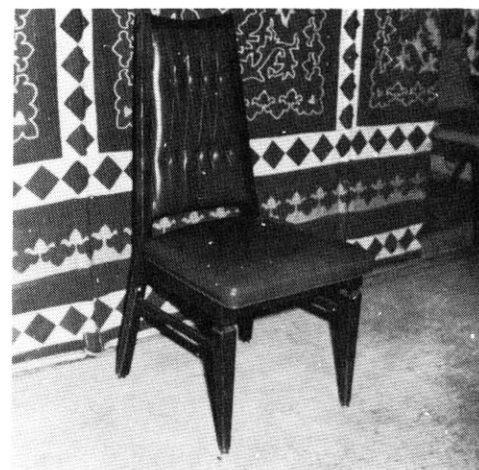
IMPORTANT! R E A D "INFORMATION REGARDING PURCHASE OF ITEMS" ON PG. SEVENTY NINE.



\* RD-1



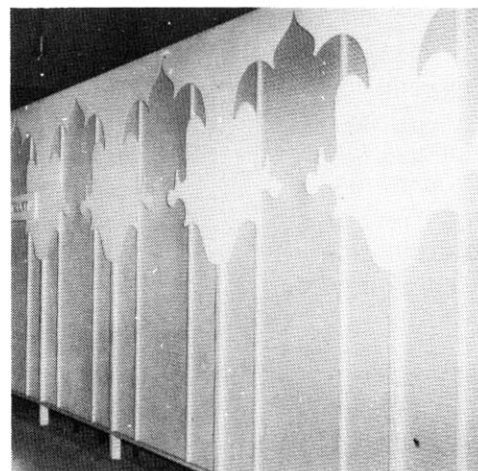
\* RD-3



\* RD-4



\* RD-5 & RD-13



\* RD-6



\* RD-19

## RESTAURANT KITCHEN EQUIPMENT

ITEM NO. / QUANTITY / DESCRIPTION	PAVILION & INSPECTION TIME	PRICE ORIGINAL / ASKING
No. RK-1 / 1 CHINESE SMOKE PORK HOUSE, 30" wide x 24" deep x 66" high, constructed of galvanized iron.	NID of Thailand Pavilion 9AM-5PM After Fair 9AM-5PM	\$335 /Best Offer
No. RK-2 / 1 CHINESE RANGE, 2 holes 56" x 40".	"	\$465 /Best Offer
No. RK-3 / 1 SMALL CLAY OVEN, large clay urn in brick & slate housing, depth of oven 32", diameter 24".	Pakistan Restaurant 12:30PM-1:30PM After Fair by Appointment	- /\$300
No. RK-4 / 1 "BENDIX-WESTINGHOUSE" REFRIGERATOR, walk-in, size 120" x 102" x 120", type LRA-40, 1 HP 230 V.	BFE, Incorporated 10AM-10PM After Fair 9AM-5PM by Appointment Only	\$600 /Best Offer
No. RK-5 / 2 "HOWARD" REFRIGERATORS, type W-L-30, sliding doors with enamel exterior.	"	\$200 /Best Offer each
No. RK-6 / 1 "GLENCO" REFRIGERATOR, type ALA-15-S, stainless steel, one-door, size 70" x 25" x 34".	"	\$200 /Best Offer
No. RK-7 / 1 "GLENCO" REFRIGERATOR, type AL-40-S stainless steel, two doors, size 70" x 50" x 34".	"	\$240 /Best Offer
No. RK-8 / 2 "EVANS" REFRIGERATORS, top loading stainless steel formica counter, 4 AMP.	"	\$150 /Best Offer each
No. RK-9 / 1 TRAUlsen REFRIGERATOR, 7'3" x x 34" x 6'3", six half doors.	NID of Thailand Pavilion 9AM-5PM After Fair 9AM-5PM	\$2,280 /Best Offer

## RESTAURANT KITCHEN EQUIPMENT

ITEM NO. / QUANTITY / DESCRIPTION	PAVILION & INSPECTION TIME	PRICE ORIGINAL / ASKING
No. RK-10 / 1 LARGE 6 COMPARTMENT REFRIGERATOR, heavy duty stainless steel, removable racks, overall dimensions: 6' H x 6'6" W x 2'8" Deep.	Pakistan Restaurant 12:30PM-1:30PM After Fair by Appointment	- /Best Offer
* No. RK-11 / 1 "KOCH" 3 DOOR REFRIGERATOR, 71 cubic feet, Model #K-71T. ( Picture on page 63 )	Guinea Pavilion 11:30AM-9:00PM After Fair by Appointment	- /Best Offer
No. RK-12 / 1 LARGE "RAETONE" REFRIGERATOR, 3 compartments (two 5' x 20", one 4.5' x 20"), stainless steel construction, overall dimensions: 6' H x 6' W x 2' Deep.	"	- /Best Offer
No. RK-13 / 1 SMALL "RAETONE" FREEZER, single door stainless steel construction, 6' H x 20" W x 2' Deep.	"	- /Best Offer
No. RK-14 / 1 FOUR-BIN STEAMTABLE, Make: "Wasserstrom", Model: Food-o-matic #FGOS4, 6' L x 2' W x 3' H, with stainless steel undershelf.	Pakistan Restaurant 12:30PM-1:30PM After Fair by Appointment	- /Best Offer
No. RK-15 / 1 COOK'S TABLE, 6'6" x 31" - #14 gauge stainless steel top, #18 gauge galvanized body - slide doors, two (2) sided - gas heat - 6" stainless steel legs.	NID of Thailand Pavilion 9AM-5PM After Fair 9AM-5PM	\$926 /Best Offer
No. RK-16 / 1 "WASSERSTROM" COOK'S TABLE, stainless steel with water pan and 4 adapter panels, gas burners, 2 under-shelves, and water inlet faucet. 9' long x 2'2" wide x 34" high, Model #T108.	Guinea Pavilion 11:30AM-9:00PM After Fair by Appointment	- /Best Offer
No. RK-17 / 1 BAIN MARIE, 3' x 2' x 10" deep - #16 gauge stainless steel with #16 stainless steel false bottom, gas heat.	NID of Thailand Pavilion 9AM-5PM After Fair 9AM-5PM	\$475 /Best Offer

## RESTAURANT KITCHEN EQUIPMENT

ITEM NO. / QUANTITY / DESCRIPTION	PAVILION & INSPECTION TIME	PRICE ORIGINAL / ASKING
No. RK-18 / 1 GARLAND SALAMANDER BROILER #16-50.	NID of Thailand Pavilion 9AM-5PM After Fair 9AM-5PM	\$200 /Best Offer
No. RK-19 / 1 "GARLAND" GRIDDLE AND BROILER Model #25-40.	Guinea Pavilion 11:30AM-9:00PM After Fair by Appointment	- /Best Offer
No. RK-20 / 1 "STAR MASTER" DEEP FAT FRYER, Model #101, 4900 watts, 208 volts, AC only, 18" L x 16" W x 10" deep.	"	- /Best Offer
No. RK-21 / 1 "GARLAND" DEEP FAT FRYER, with double plate shelf #50-14 and double shelf.	NID of Thailand Pavilion 9AM-5PM After Fair 9AM-5PM	\$320 /Best Offer
* No. RK-22 / 1 "TOLEDO" DISHWASHING MACHINE, automatic time control, 4 racks, Model #TDA-27. ( Picture on page 63 )	Guinea Pavilion 11:30AM-9:00PM After Fair by Appointment	- /Best Offer
No. RK-23 / 1 "INSINGER" COMMANDER DISHWASHER, #16 automatic with gas safety pilot and low water cut-off.	NID of Thailand Pavilion 9AM-5PM After Fair 9AM-5PM	\$1,460 /Best Offer
No. RK-24 / 1 STAINLESS STEEL SOILED DISH TABLE, 8' 6" x 2', #14 gauge. Galvanized iron legs, stainless steel feet, 20" x 20" x 8" pre-wash sink. Constructed of #16 gauge stainless steel and provided with T & S faucet and hose. Legs 1 1/4" iron pipe with stainless steel feet.	"	\$794 /Best Offer
No. RK-25 / 1 "SOILED-DISH" TABLE, stainless steel with refuse hopper, rinse sink and spray unit.	Guinea Pavilion 11:30AM-9:00PM After Fair by Appointment	- /Best Offer

# RESTAURANT KITCHEN EQUIPMENT

ITEM NO. / QUANTITY / DESCRIPTION	PAVILION & INSPECTION TIME	PRICE ORIGINAL / ASKING
No. RK-26 / 1 STAINLESS STEEL CLEAN DISH TABLE, 4' 6" long x 2' wide, #14 gauge, set in #18 gauge galvanized iron body with sliding doors on ball bearing shelves on one side and set on stainless steel legs.	NID of Thailand Pavilion 9AM-5PM After Fair 9AM-5PM	\$497 /Best Offer
No. RK-27 / 1 "PRIZER" TABLE RANGE, four 10" burners, overall dimensions, 20" L x 24" W x 10" H.	Guinea Pavilion 11:30AM-9:00PM After Fair by Appointment	- /Best Offer
* No. RK-28 / 1 "GARLAND" GAS RANGE, 34" top only, #94-50. 1 "GARLAND" RANGE BASE, 34" x 42" constructed of #16 gauge galvanized iron with #16 galvanized iron shelves 5" apart. ( Picture on page 63 )	NID of Thailand Pavilion 9AM-5PM After Fair 9AM-5PM	\$515 /Best Offer for base & gas range
No. RK-29 / 1 RANGE HOOD, for "Garland" 6 burner range.	Pakistan Restaurant 12:30PM-1:30PM After Fair by Appointment	- /Best Offer
No. RK-30 / 1 STAINLESS STEEL RANGE HOOD, with 3 removable 1000CFM grease filters, vapor proof light, 6' x 3'6" x 2'.	Guinea Pavilion 11:30AM-9:00PM After Fair by Appointment	- /Best Offer
No. RK-31 / 1 GALVANIZED IRON HOOD, 9'4" x 4'6" x 12" with two (2) lights and filters galvanized.	NID of Thailand Pavilion 9AM-5PM After Fair 9AM-5PM	\$581 /Best Offer
No. RK-32 / 1 Three inch SECTIONAL TOP WORK TABLE, 7' long x 2' wide, mounted on 1½" galvanized pipe legs with stainless steel feet and provided with a #16 gauge galvanized iron undershelf and one (1) drawer.	"	\$334 /Best Offer
No. RK-33 / 2 WORK BENCHES, 4'6", with seamless bowls. 1-2 compartments and 1-3 compartments.	"	- /Best Offer

# RESTAURANT KITCHEN EQUIPMENT

ITEM NO. / QUANTITY / DESCRIPTION	PAVILION & INSPECTION TIME	PRICE ORIGINAL / ASKING
No. RK-34 / 1 "WASSERSTROM" STAINLESS STEEL WORK TABLE, 48" L x 30" W x 34" H. Model #T48.	Guinea Pavilion 11:30AM-9:00PM After Fair by Appointment	- /Best Offer
No. RK-35 / 1 GALVANIZED WORK TABLE WITH SINK, has utensil drawer and undershelf, sink 4' deep, table- 6' L x 2'6" W x 3' H.	Pakistan Restaurant 12:30PM-1:30PM After Fair by Appointment	- /Best Offer
No. RK-36 / 1 "WASSERSTROM" SINK AND DRAINBOARD, #14 gauge stainless steel, Model #ST124.	Guinea Pavilion 11:30AM-9:00PM After Fair by Appointment	- /Best Offer
No. RK-37 / 1 "ENTERPRISE" PERCOLATOR, 4 gallon capacity, 120 volts, 14" H x 12" diameter.	"	- /Best Offer
No. RK-38 / 1 "GRUENBERG" PERCOLATOR, capacity 5 gallons, type - CUN, serial #825, 110 volts, 1500 watts, 33" H x 10" diameter.	"	- /Best Offer
No. RK-39 / Large quantity SHELVES, RACKS, SHOWCASES.	BFE, Incorporated 10AM-10PM After Fair 9AM-5PM by Appointment Only	- /Best Offer
No. RK-40 / Large quantity SINKS, with one, two, three compartments.	"	- /Best Offer
No. RK-41 / 1 TWO (2) COMPARTMENT POT SINK, 4' L x 2' W x 16" deep with 2' wide drainboard, constructed of #14 gauge stainless steel with coved corners both vertical and horizontal and mounted on 1½" galvanized iron pipe legs with stainless steel feet. Sink has lever handle waste and is provided with chromaplated faucets. Waster has connected overflow.	NID of Thailand Pavilion 9AM-5PM After Fair 9AM-5PM	\$734 /Best Offer

## RESTAURANT KITCHEN EQUIPMENT

ITEM NO. / QUANTITY / DESCRIPTION	PAVILION & INSPECTION TIME	PRICE ORIGINAL / ASKING
No. RK-42 / 1 SHELF TO SET OVER WORK TABLE SINK AND DRAINBOARD, 17' L x 12" W, constructed of #16 gauge galvanized iron.	NID of Thailand Pavilion 9AM-5PM After Fair 9AM-5PM	\$104 /Best Offer
No. RK-43 / 1 SHELF OVER SOILED DISH TABLE, 6'6" L x 12" W, constructed of #16 gauge galvanized iron.	"	\$52 /Best Offer
No. RK-44 / 1 STAINLESS STEEL SERVICE SHELF, 6'6" x 14" - #14.	"	\$158 /Best Offer
No. RK-45 / 1 "WASSERSTROM" STAINLESS STEEL WAITER'S TABLE, 2 undershelves, 48" L x 30" W x 34" H. Model #T48.	Guinea Pavilion 11:30PM-9:00PM After Fair by Appointment	- /Best Offer
No. RK-46 / 1 "WASSERSTROM" WORKBOARD AND COCKTAIL STATION, Model IMP (workboard) & #108-24 (cocktail station).	"	- /Best Offer
No. RK-47 / 1 "WASSERSTROM" WATER STATION, push-back faucet, Model #CTS.	"	- /Best Offer
No. RK-48 / 1 "WASSERSTROM" SERVING TABLE stainless steel, 16" x 20" x 10" sink bowl, lever waste, and swivel faucet, Model #T132.	"	- /Best Offer
No. RK-49 / 1 SCOTSMAN ICE CUBE MAKER, Model S. N. 210, air cooled.	NID of Thailand Pavilion 9AM-5PM After Fair 9AM-5PM	\$1,079 /Best Offer
No. RK-50 / 1 SMALL ICE MACHINE, makes hundreds of crystal clear, square little ice cubes; overall dimensions of machine: 44" L x 26" W x 46" H.	Guinea Pavilion 11:30AM-9:00PM After Fair by Appointment	- /Best Offer

## RESTAURANT KITCHEN EQUIPMENT

ITEM NO. / QUANTITY / DESCRIPTION	PAVILION & INSPECTION TIME	PRICE ORIGINAL / ASKING
No. RK-51 / 1 "NATIONAL REFRIGERATOR" BEER COOLER, type RW, with enamel exterior.	BFE, Incorporated 10AM-10PM After Fair 9AM-5PM by Appointment Only	\$150 /Best Offer
No. RK-52 / 1 DIRECT DRAW DRAFT BEER COOLER, Model D.D.K.-2S. Manufactured by "Ideal." Self-contained.	NID of Thailand Pavilion 9AM-5PM After Fair 9AM-5PM	- /Best Offer
No. RK-53 / 1 SMALL FOOD WARMER, 20" L x 16" W x 16" deep, stainless steel construction, Make: Hot Food Boxes, Inc., Model H3, 150 watts.	Pakistan Restaurant 12:30PM-1:30PM After Fair by Appointment	- /Best Offer
No. RK-54 / Large quantity "HOBART" MIXER MACHINES, from 60 quarts to 20 quarts.	BFE, Incorporated 10AM-10PM After Fair 9AM-5PM by Appointment Only	- /Best Offer
No. RK-55 / Large quantity "QUALHEIM" FOOD CUTTERS.	"	- /Best Offer
No. RK-56 / Large quantity "HOBART" VEGETABLE CUTTERS.	"	- /Best Offer
No. RK-57 / 3 "FURNAS" MAGNETIC STARTERS, three phases, 220/440 volts, 60 CY. 21 amps.	"	- /Best Offer
No. RK-58 / 4 VENTILATION FANS, type RP-163, 1/3 hp 115V, ILG Bu. DB 7-102B.	Philippine Pavilion 10AM-6PM After Fair by Appointment	- /Best Offer

IMPORTANT! R E A D "INFORMATION REGARDING PURCHASE OF ITEMS" ON PG. SEVENTY NINE.



## RESTAURANT KITCHEN EQUIPMENT

ITEM NO. / QUANTITY / DESCRIPTION	PAVILION & INSPECTION TIME	PRICE ORIGINAL / ASKING
No. RK-59 / 2 "FRIGID" EXHAUST FANS, size 30", motor 1/3, 110 volts.	BFE, Incorporated 10AM-10PM After Fair 9AM-5PM by Appointment Only	- /Best Offer
No. RK-60 / 1 EXHAUST FAN AND VENT DUCT.	Pakistan Restaurant 12:30PM-1:30PM After Fair by Appointment	- /Best Offer
No. RK-61 / 1 EXHAUST FAN, size 48", motor 3/4, 220 volts.	BFE, Incorporated 10AM-10PM After Fair 9AM-5PM by Appointment Only	- /Best Offer
No. RK-62 / 1 URN STAND WITH STAINLESS STEEL TOP, 2'6" x 2', 18 gauge galvanized iron body, bottom and middle shelf, 6" stainless steel legs.	NID of Thailand Pavilion 9AM-5PM After Fair 9AM-5PM	\$422 /Best Offer
No. RK-63 / 1 "WASSERSTROM" HIGH STORAGE CABINET, sliding doors, Model #SC48, 4' L x 2'4" W x 6'6" H.	Guinea Pavilion 11:30AM-9:00PM After Fair by Appointment	- /Best Offer
No. RK-64 / 1 "CORY" COFFEE MAKER, Model #CH3.	"	- /Best Offer
No. RK-65 / 1 JUICE DISPENSER	"	- /Best Offer
No. RK-66 / 1 "SILEX" TWIN HOT PLATE	"	- /Best Offer
No. RK-67 / 3 MAESTRO PIZZA OVENS	Greer Marechal Bar Building 30 W. 44th St.	- /Best Offer
No. RK-68 / 1 WALK-IN REFRIGERATOR with compressor and blower.	"	- /Best Offer

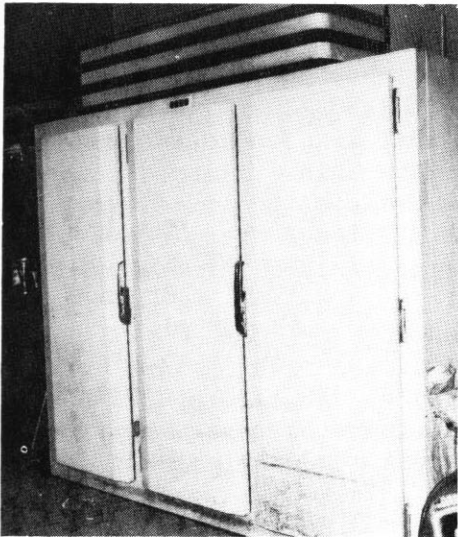
# RESTAURANT KITCHEN EQUIPMENT

ITEM NO.	QUANTITY/DESCRIPTION	PAVILLION & INSPECTION TIME	PRICE ORIGINAL/ASKING
No. RK-69 / 2	MAESTRO RETARDERS	Greer Marechal Bar Building 30 W. 44th St.	- /Best Offer
No. RK-70 / 1	Scotchman ICE MAKER	"	- /Best Offer
No. RK-71 / 2	Stainless Steel WORK TABLES	"	- /Best Offer
No. RK-72 / 2	GLASS DISPLAY CASES	"	- /Best Offer
No. RK-73 / 1	STA COLD REFRIGERATOR VICTORY	"	- /Best Offer
No. RK-74 / 1	GLASS, 3 DOOR, 40 C.F.	"	- /Best Offer
No. RK-75 / 4	SHELVING STORAGE RACKS	"	- /Best Offer
No. RK-76 / 1	POPCORN MACHINE	"	- /Best Offer
No. RK-77 / 1	STAINLESS STEEL WORK TABLE, 3½'	"	- /Best Offer
No. RK-78 / 1	STAINLESS STEEL TABLE 4'	"	- /Best Offer
No. RK-79 / 2	GLASS REFRIGERATORS, 2 DOOR	"	- /Best Offer
No. RK-80 / 1	CECILWARE BROILER	"	- /Best Offer
No. RK-81 / 1	GLOBE SLICER	"	- /Best Offer
No. RK-82 / 1	ROLAGRILL	"	- /Best Offer
No. RK-83 / 5	STAINLESS STEEL TOP WORK TABLES	"	- /Best Offer
No. RK-84 / 1	GRILL	"	- /Best Offer
No. RK-85 / 2	TOASTMASTER FRYERS (24" and 36")	"	- /Best Offer
No. RK-86 / 2	HOODS	"	- /Best Offer
No. RK-87 / 1	LARGE PAN STAINLESS STEEL STEAM TABLE AND 4 insert holes with stainless steel pans and inserts	"	- /Best Offer
No. RK-88 / 1	TWO-DOOR FREEZER	"	- /Best Offer

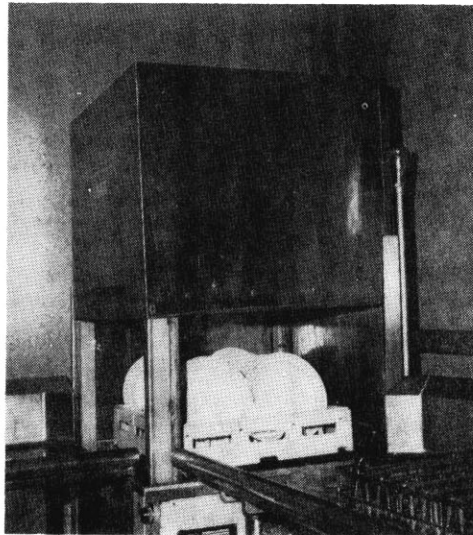
# RESTAURANT KITCHEN EQUIPMENT

ITEM NO.	QUANTITY/DESCRIPTION	PAVILLION & INSPECTION TIME	PRICE ORIGINAL/ASKING
No. RK-89 /	1 SHELVING FOR POTS	Greer Marechal Bar Building 40 W. 44th St.	- /Best Offer
No. RK-90 /	1 2-DOOR GLENCO REF- RIGERATOR	"	- /Best Offer
No. RK-91 /	1 FOUR BURNER GAS STOVE	"	- /Best Offer
No. RK-92 /	2 STAINLESS STEEL SINKS	"	- /Best Offer
No. RK-93 /	1 set SHELVING	"	- /Best Offer
No. RK-94 /	POTS, PANS AND MISC. KITCHEN EQUIPMENT	"	- /Best Offer

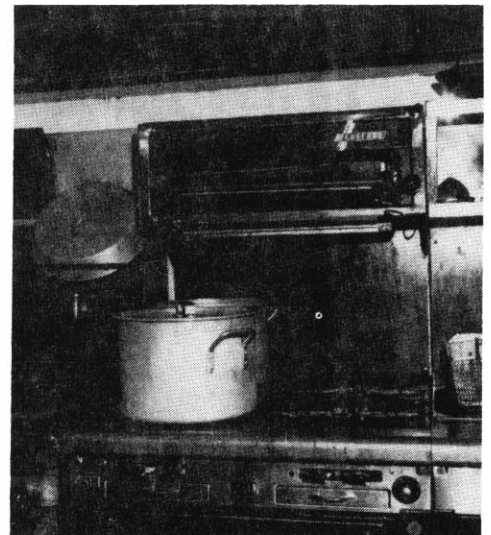
IMPORTANT! R E A D "INFORMATION REGARDING PURCHASE OF ITEMS" ON PG. SEVENTY NINE.



\* RK-11



\* RK-22



\* RK-28

# WOMEN'S APPAREL & ACCESSORIES

ITEM NO. / QUANTITY / DESCRIPTION	PAVILION & INSPECTION TIME	PRICE ORIGINAL / ASKING
No. W-1 / small quantity HANDWOVEN TEXTILES AND APPAREL ITEMS by WIZO and MASKIT.	American-Israel Pavilion 10AM-10PM After Fair by Appointment	- /Best Offer
* No. W-2 / 24 SILK SARIS, loose flowing Far Eastern & far out gown with match- ing shawl. Extra heavy silk brocade in delicate Pakistani design. ( Picture on page 67 )	Pakistan Pavilion 12:30-1:30PM After Fair by Appointment	- /\$15-45 in lots \$20-60 each.
* No. W-3 / 1 set RIBBED CAPIZ SHELL NECKLACE & BRACELET, shell highly polished and set in intricate Philippino design, silver mountings. ( Picture on page 67 )	Philippine Pavilion 10AM-6PM After Fair 9AM-5PM	- /Best Offer
* No. W-4 / 1 TAN WOMENS' COAT, single breasted with belt. 100% wool with fur collar. Approx. size 12-14. Firm: H. Mandel. ( Picture on page 67 )	Berlin Pavilion 10AM-10PM After Fair by Appointment	\$67 /Best Offer
No. W-5 / 1000 yards HANDLOOMED COTTONS, SILKS, BROCADES, AND SYNTHETICS. Specialty is gauze thin fabrics with rich silver and gold brocade. Not often available in this country.	Pakistan Pavilion 12:30-1:30PM After Fair by Appointment	- /Cottons 50¢ per yd.,Syn. \$1.50 " " ,Brocade \$3 per yd.
No. W-6 / SILK BEIGE DRESS, empire style with sequin sleeves and button front, approx. size 10-12, Label: H. Schwitchenberg.	Berlin Pavilion 10AM-10PM After Fair by Appointment	\$95 /Best Offer
No. W-7 / MINK trimmed black broadtail coat by Rosen of Tel-Aviv.	American-Israel Pavilion 10AM-10PM After Fair by Appointment	- /Best Offer

WOMEN'S APPAREL & ACCESSORIES

ITEM NO. / QUANTITY / DESCRIPTION	PAVILION & INSPECTION TIME	PRICE ORIGINAL / ASKING
No. W-8 / TAN 2 PIECE SUIT, single breasted 4 button jacket with fur collar. Suit 100% wool, approx. size 12-14. Firm: H. Mandel	Berlin Pavilion 10AM-10PM After Fair by Appointment	\$67 /Best Offer
No. W-9 / POLISHED COWERIE SHELL NECKLACE. Tiny slightly tinted shells strung like pearls to make a unique necklace.	Philippine Pavilion 10AM-6PM After Fair 9AM-5PM	- /Best Offer
No. W-10 / large quantity French-Tunisian PERFUMES in $\frac{1}{2}$ , 1, and 6 oz. stopper bottles gilded with native scroll work. Available in 4 scents; Jasmine, Sandalwood, Rose and Arabian Night.	Sudan Pavilion 10AM-10PM After Fair 10AM-5PM	- /\$8 per oz.
No. W-11 / large quantity EARRINGS IN FOLK DESIGN. Scarab earrings of natural ivory and blue ceramic. Also wooden and ivory earrings in various shapes and designs. Available in screw back and for pierced ears.	"	- /Best Offer
No. W-12 / large quantity HAND CRAFTED NECKLACES. Sterling silver plated in exquisite scarab design with disappearing clasp.	"	- /Best Offer
No. W-13 / small quantity PENDANTS with turquoise scarab design on a 24" Sterling silver chain.	"	- /Best Offer
* No. W-14 / large quantity ARABIC "CARAVAN" BRACELETS. Slip on bracelets of $2\frac{1}{2}$ " Sterling silver squares overlaid with native ceramic work. Same available with scarab design in a gold setting. ( Picture on page 67 )	"	- /Best Offer

WOMEN ' S APPAREL & ACCESSORIES

ITEM NO. / QUANTITY / DESCRIPTION	PAVILION & INSPECTION TIME	PRICE ORIGINAL / ASKING
* No. W-15 / large quantity STERLING 8" CLASP BRACELETS, overlaid with native ceramic work. Also with scarab design on six sterling ovals. ( Picture on page 67 & 77 )	Sudan Pavilion 10AM-10PM After Fair 9AM-5PM	- /Best Offer
No. W-16 / small quantity IVORY CLASP BRACELETS, carved with jungle animals.	"	- /Best Offer
No. W-17 / large quantity EXQUISITE NATIVE RINGS of compressed amber stones on a Sterling silver base. Also contemporary ivory and wooden wedding bands.	"	- /Best Offer
No. W-18 / small quantity NATIVE HANDBAGS AND CARRY-ALLS, available in two styles: woven leather and beaded bags; also 18" snakeskin bags for traveling.	"	- /Best Offer
No. W-19 / Many yards of home- spun GUINEAN CLOTH. Tropical colors in unusual African pattern.	Guinea Pavilion 11:30AM-9PM After Fair by Appointment	- /Best Offer
No. W-20 / small quantity Hand crafted African walking SANDALS in many styles and colors.	"	- /Best Offer
* No. W-21 / large quantity ANIMAL HIDE AND REPTILE SKIN BAGS. (a) Handbags 11" x 6" flap open, with wallet snap pouch and zippered center. (b) Bags available in nat. cheetah, antelope, leopard, and zebra hides; and also in cobra and python-skin finish. All handbags are antelope- skin lined, with cobra trim on the fur items. ( Picture on page 67 )	Sudan Pavilion 10AM-10PM After Fair 10AM-5PM	

# WOMEN'S APPAREL & ACCESSORIES

ITEM NO. / QUANTITY / DESCRIPTION	PAVILION & INSPECTION TIME	PRICE ORIGINAL / ASKING
-----------------------------------	----------------------------	-------------------------

No. W-21 / large quantity ANIMAL HIDE AND REPTILE SKIN BAGS.

(c) Same bags also in size 10" x 11".

(d) Natural crocodile bags 14" x 20".

(e) Pouch-type carry-alls 4" x 7" and 8" x 12". Made from scraped and tanned antelope hide and available in natural, red & green finish.

Sudan Pavilion  
10AM-10PM  
After Fair  
10AM-5PM.

- /Best Offer

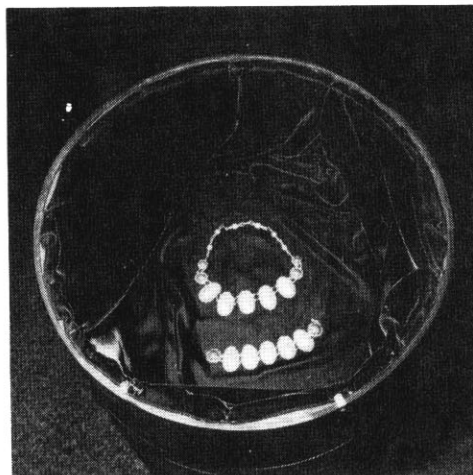
No. W-22 / large quantity WALLETS:  
4" x 4" with billfold and change purse. Available in a large variety of skins, including lizard, natural antelope, and many more

- /Best Offer

IMPORTANT! R E A D "INFORMATION REGARDING PURCHASE OF ITEMS" ON PG. SEVENTY NINE.



\* W-2



\* W-3



\* W-4



\* W-14 & W-15



\* W-21 Page 67



\* W-21



ITEM NO. / QUANTITY / DESCRIPTION	PAVILION & INSPECTION TIME	PRICE ORIGINAL / ASKING
G-1 / 2 CORRALS, precut 5" logs, cyclone fence lines, assembled with bolts, 3 gates.	Montana Pavilion 9AM-5PM After Fair by Appointment	- /\$75 each
* G-2 / 1 LARGE OUTDOOR BENCH, 5 SEATS HEWN FROM SINGLE 12' L x 2' W x 8" THICK HARD-WOOD PLANK; with modernistic brass supports. Perfect for tree surgeon's waiting room. ( Picture on page 77 )	Philippine Pavilion 10AM-6PM After Fair by Appointment	- /Best Offer
G-3 / 10 PHILIPPINE COTTON HANGINGS, native colors in a striped pattern. Length 15' x 22' width, with wire and wood mountings.	"	- /Best Offer
* G-4 / 8 EXOTIC ASSORTMENTS OF ARTIFICIAL PLANTS, variety of sizes and shapes ranging from 3' to 6' in height. ( Picture on page 77 )	Pakistan Pavilion 12:30PM-1:30PM After Fair by Appointment	- /Best Offer
* G-5 / 13 ORNATE BRASS LAMPS, middle eastern grill work, 12" H x 10" (distance extending from Wall). ( Picture on page 77 )	"	- /Best Offer
G-6 / 1 SMALL ORNAMENTAL IRONWORK GATE, Israeli design.	American-Israel Pavilion 10AM-10PM After Fair by Appointment	- /Best Offer
G-7 / 1 GIANT CLAM SHELL with metal rod stand, 2' L x 1½' W, on 20" H black steel rod stand. Can be used as convention-hall ashtray.	Philippine Pavilion 10AM-6PM After Fair by Appointment	- /Best Offer
G-8 / 1 OVERHEAD LIGHTING FIXTURE, brass colored wooden grid with frosted plastic plate face. 4' x 4'.	Guinea Pavilion 11:30AM-9:00PM After Fair by Appointment	- /Best Offer

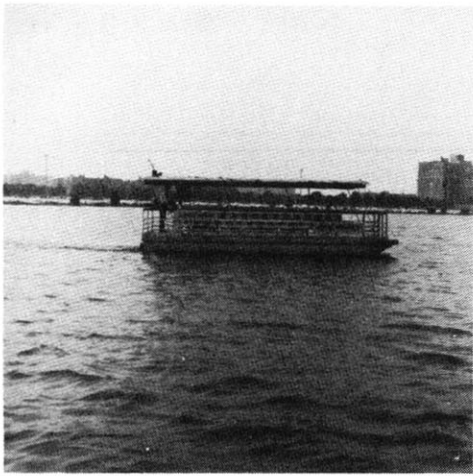


ITEM NO. / QUANTITY / DESCRIPTION	PAVILION & INSPECTION TIME	PRICE ORIGINAL / ASKING
G-9 / 1 TEN INCH SHELL INLAY DISH, whole capiz shell, polished, laminated and ground, then given a protective plastic finish.	Philippine Pavilion 10AM-6PM After Fair by Appointment	- /Best Offer
G-10 / 1 SMALL CONCH SHELL, 8" long, delicately hued Pacific conch.	"	- /Best Offer
G-11 / Small quantity GUINEAN MOSAICS. Native scenes depicted on 2'sq. panels in unusual African art form.	Guinea Pavilion 11:30AM-9:00PM After Fair by Appointment	- /Best Offer
G-12 / ROCKS OF THE HOLY LAND. Approximately 300 rocks of various sizes (from several tons to 200 lbs.) and hues, quarried in various parts of Israel.	American-Israel Pavilion 10AM-10PM After Fair by Appointment	- /Best Offer
G-13 / 1 HUGE PHOTO MURAL OF HAIFA, as seen from atop Mt. Carmel. Seven 30' H x 10' W panels.	"	- /Best Offer
G-14 / 1 LARGE SIMULATED BRONZE PLAQUE, "THE HOPE", done in relief, depicting figures representing the past, present, and future of Israel, artist: Zvi Geyra.	"	- /Best Offer
G-15 / 1 NATIONAL INDUSTRIAL VACUUM with attachments, Model BP-2, 25-60 cycles, 9.9 amp.		- /\$425
G-16 / 1 PORCELAIN CANDLEABRUM, in Rococo design, made by the State Manufacturer of Berlin, founded in 1761. It is of blue and white design and holds five candles, 20" high, top 10" wide.	Berlin Pavilion 10AM-10PM After Fair by Appointment	\$400 /Best Offer
G-17 / 17 RED CEDAR TREES, beautiful ornamental evergreens in heights that vary from 10' to 20'.	Pakistan Pavilion 12:30PM-1:30PM After Fair by Appointment	- /Best Offer

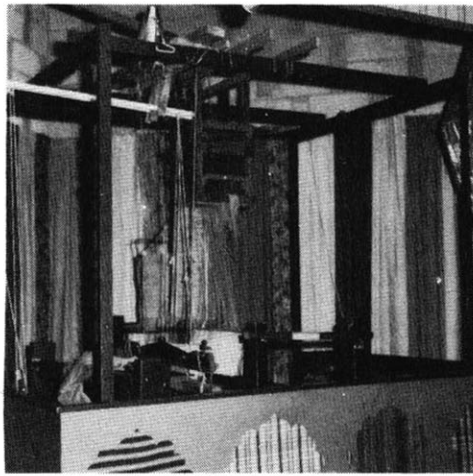
ITEM NO. / QUANTITY / DESCRIPTION	PAVILION & INSPECTION TIME	PRICE ORIGINAL / ASKING
G-18 / Small quantity SHEEPSKINS, covered with genuine 100% wool. Attention: wolves in search of a fall wardrobe!	American-Israeli Pavilion 10AM-10PM After Fair by Appointment	- /Best Offer
* G-19 / 2 "ARABIAN NIGHTS" PADDED CLOTH PARTITIONS, intricate design on multi-colored background, 6 wooden supports sewed into the material with canvas-reinforced loops to allow for suspension. 7' H x 18' L.	Pakistan Pavilion 12:30PM-1:30PM After Fair by Appointment	- /\$ 90 each \$160 for both
G-20 / 1 ORIGINAL ISRAELI MURAL ON PLASTERBOARD, "THE GLASS BLOWER", contemporary Israeli style, predominate colors: light blue & white, 14' H x 5' W.	American-Israeli Pavilion 10AM-10PM After Fair by Appointment	- /Best Offer
G-21 / Small quantity BEDOUIN UTENSILS AND STRAW BASKETS, used by the nomads of the Negev desert.	"	- /Best Offer
* G-22 / 24 APPROXIMATELY 12" HIGH CARVED ACACIA WOOD EMBLEMS OF THE PHILIPPINE PROVINCES. ( Picture on page 77 )	Philippine Pavilion 10AM-6PM After Fair by Appointment	- /Best Offer
G-23 / 4 COPPER PLAQUES OF BERLIN, all 24" diameter. First two are the German bear and the German eagle. The third is a saying by WILHEIM VON HUMBOLT 1767-1835, "Can it be that man is destined to deny his very self in pursuit of some goal or another?" The last by WILLY BRANDT "The spirit of freedom, combined with the urge for human contact, is a political reality that no salesman can ignore."	Berlin Pavilion 10AM-10PM After Fair by Appointment	\$37.50 /Best Offer each
G-24 / 5 BRONZE PLAQUES representing: World, Europe, Germany, and Berlin; symbolizing the ties between Berlin and Western Germany. They are 39" H x 39" W and show (CONT.)	"	

ITEM NO. / QUANTITY / DESCRIPTION	PAVILION & INSPECTION TIME	PRICE ORIGINAL / ASKING
G-24 (continued) geographical location. The last plaque in the series is a saying by President Kennedy, "All free men wherever they may live are citizens of Berlin."		\$87.50 /Best Offer each
G-25 / 4 PANELS OF SCENES FROM ISRAEL, approximately 1' sq., color blow-ups of photographs.	American-Israel Pavilion 10AM-10PM After Fair by Appointment	- /Best Offer
G-26 / Small quantity PHOTOS of various sizes depicting Israel's industries.	"	- /Best Offer
G-27 / 1 CERAMIC BOY AND A DOG, 8" H x 6" L. Done by students from the Hermann Ehlers School.	Berlin Pavilion 10AM-10PM After Fair by Appointment	- /Best Offer
G-28 / 1 LADY BUG FIGURE, made from copper with blue and green design. 6" L x 3" H. Done by students from the Hermann Ehlers School.	"	- /Best Offer
G-29 / 1 MOSQUITO made from wood and iron 12" L x 6" H. Done by students from the Hermann Ehlers School.	"	- /Best Offer
G-30 / 1 MAN ON HORSE made from iron 6" L x 8" H. Done by students from the Hermann Ehlers School.	"	- /Best Offer
G-31 / 2 BRASS AND IRON FIGURES, of the human anatomy 3" tall. Designed by students from the Academy of Fine Arts, Berlin.	"	- /Best Offer
G-32 / 1 SWING TYPE DESIGN shaped from iron and aluminum. 10" L. Designed by students from the Academy of Fine Arts, Berlin.	"	- /Best Offer

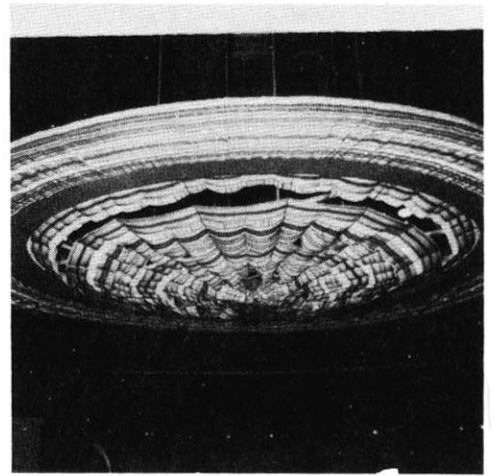
IMPORTANT! R E A D "INFORMATION REGARDING PURCHASE OF ITEMS" ON PG. SEVENTY NINE.



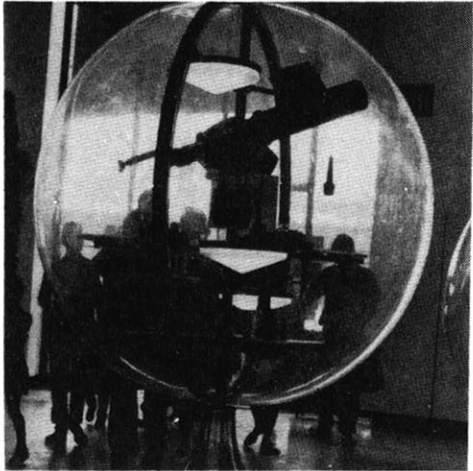
\* S-5



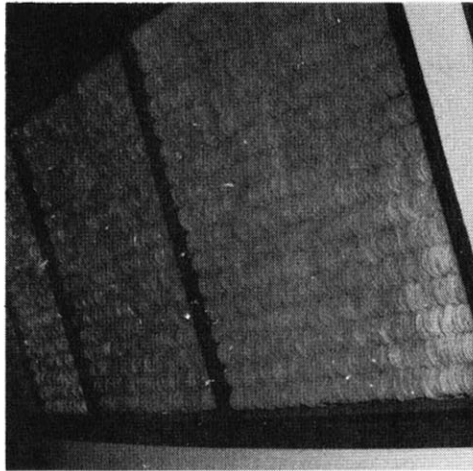
\* S-6



\* S-8



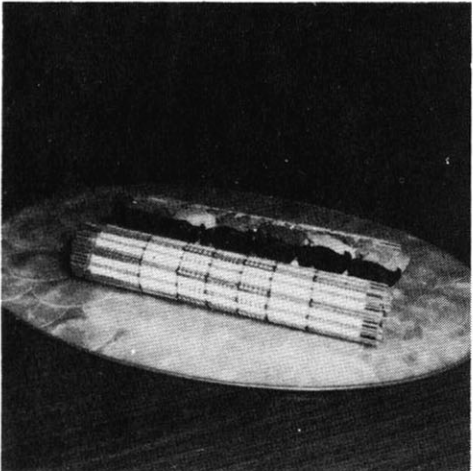
\* S-13



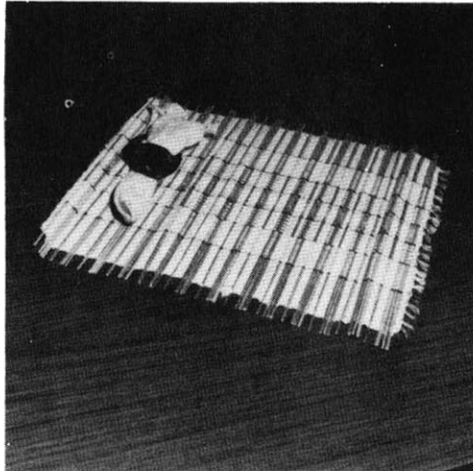
\* B-1



\* B-2



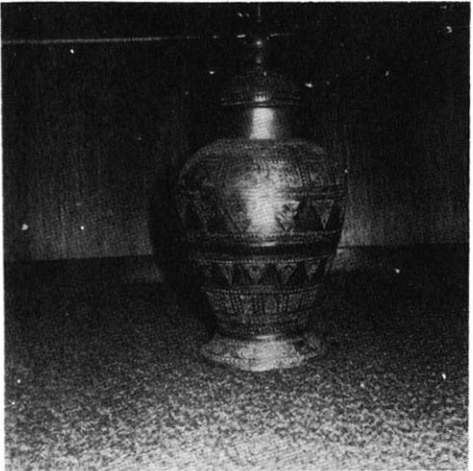
\* C-10



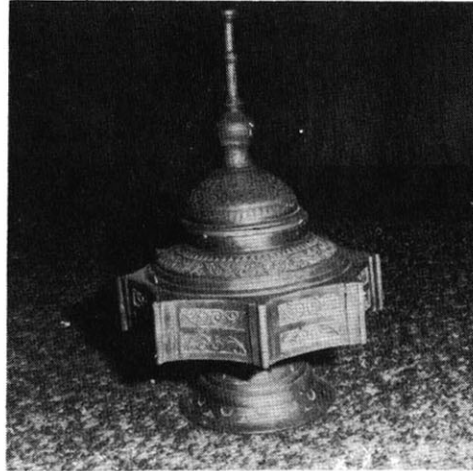
\* C-10



\* C-11



\* C-11

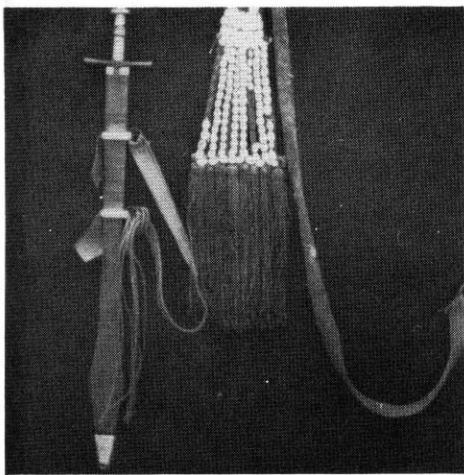


\* C-11 Page 72

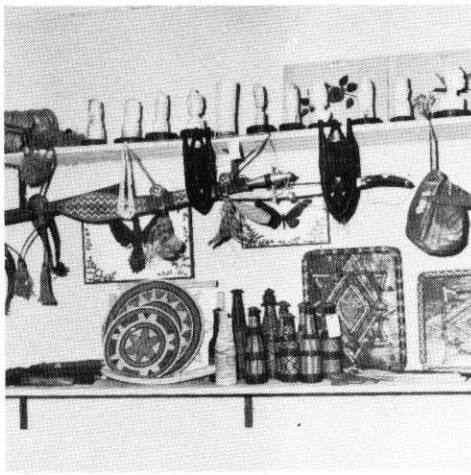


\* C-12

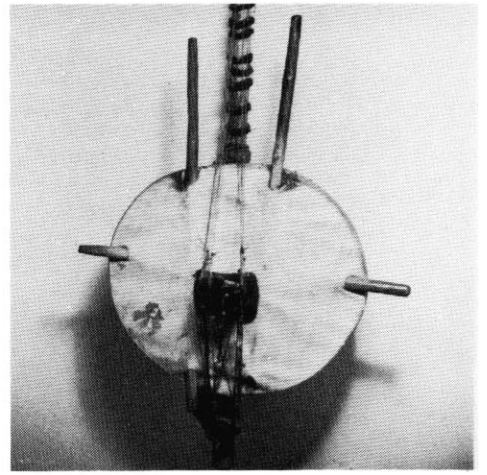




\* C-14



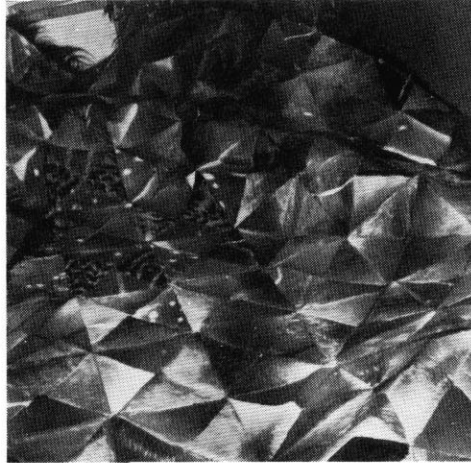
\* C-18 & C-26



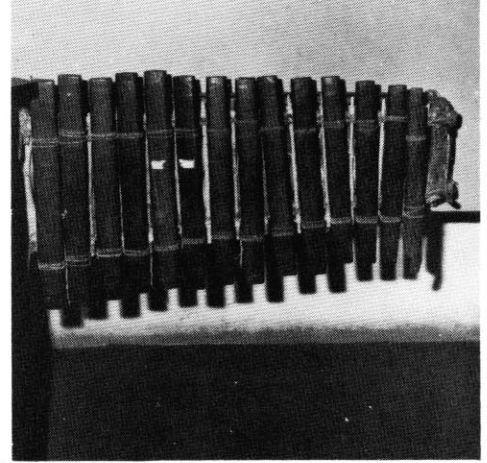
\* C-19



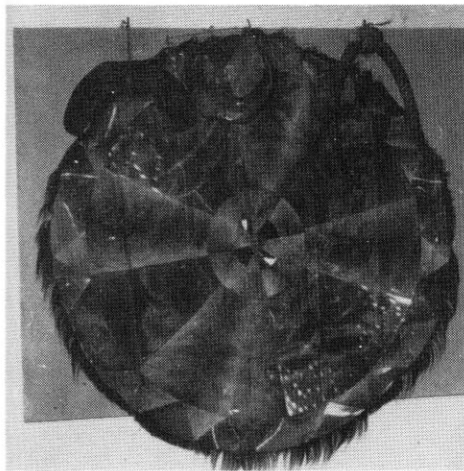
\* C-21 & C-27



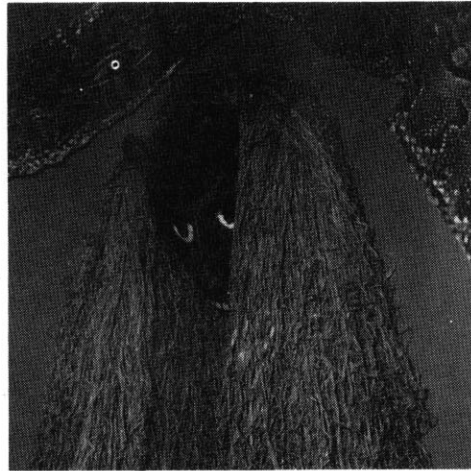
\* C-23



\* C-22



\* C-23



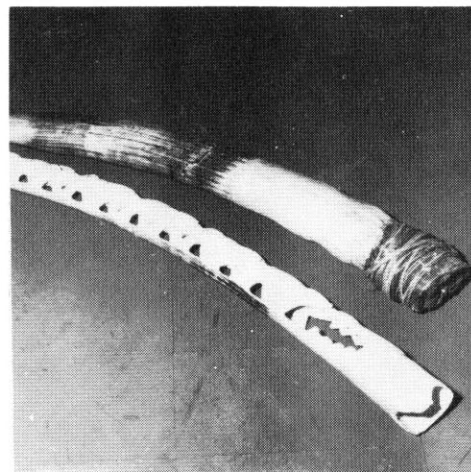
\* C-26



\* C-26



\* C-28



\* C-15 Page 73 & C-29



\* C-31



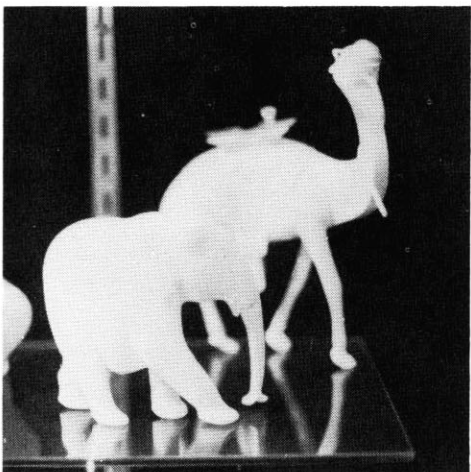
\* C-31



\* C-31



\* C-31



\* C-36



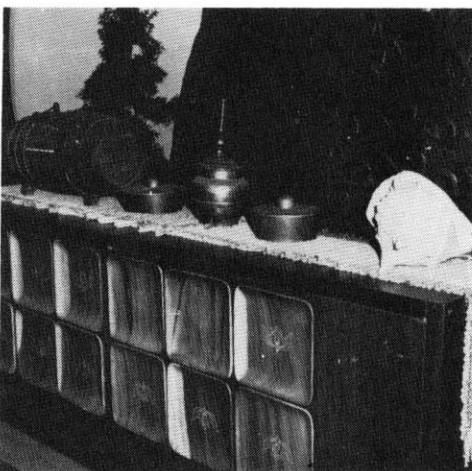
\* C-37



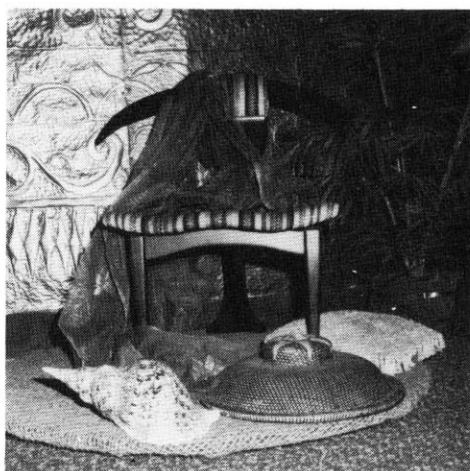
\* C-46



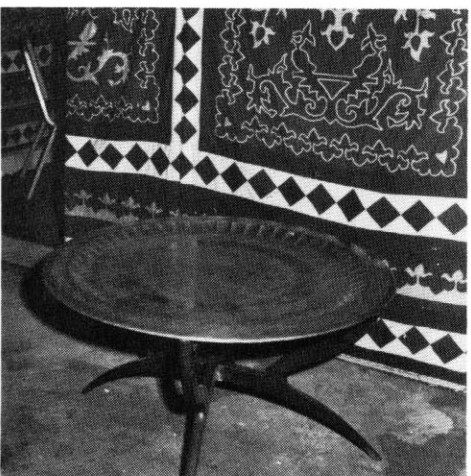
\* C-47



\* HO-1



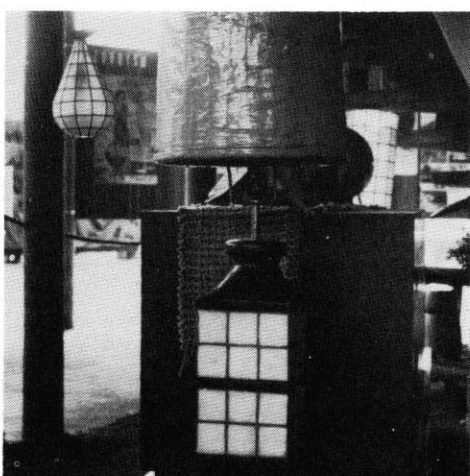
\* HO-2



\* HO-4



\* HO-9 Page 74

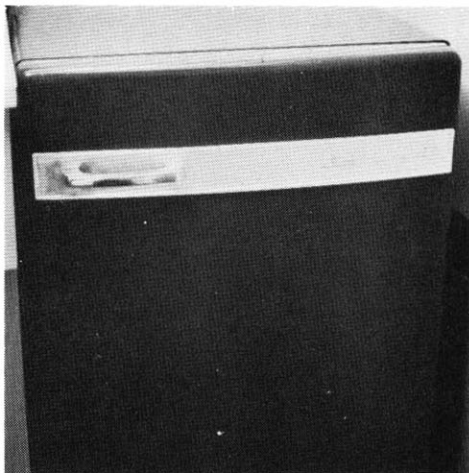


\* HO-11

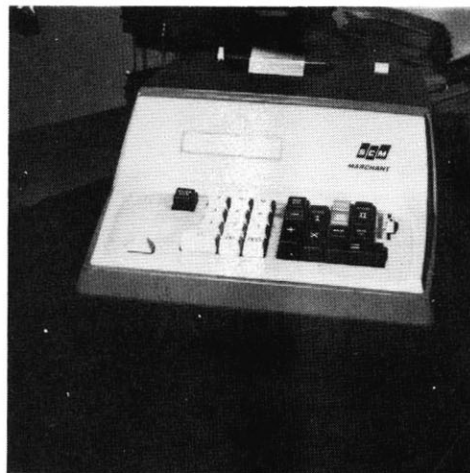




\* HO-14



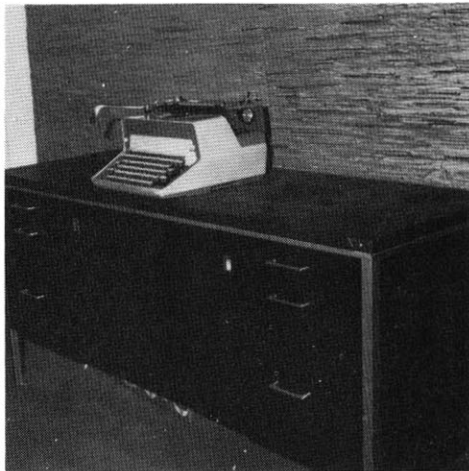
\* HO-19



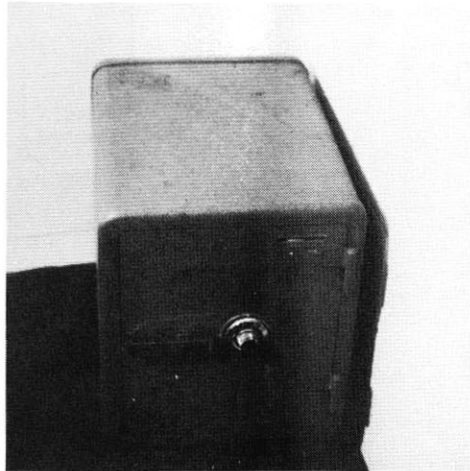
\* OFE-6



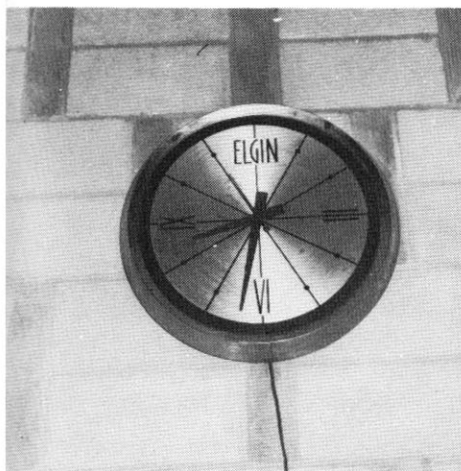
\* OFE-7



\* OFE-9



\* OFE-19



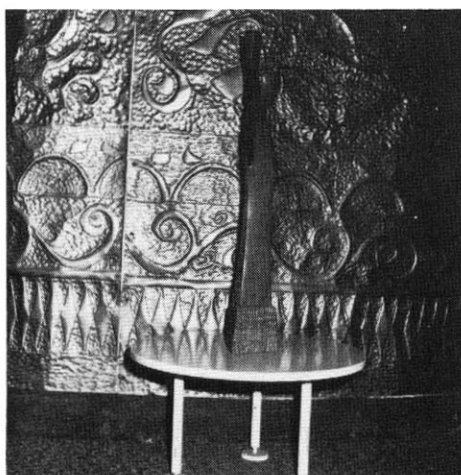
\* OFE-26



\* OUF-1



\* PA-1



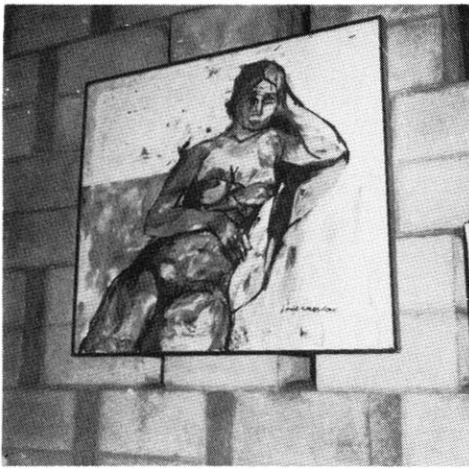
\* PA-3



\* PA-4 Page 75



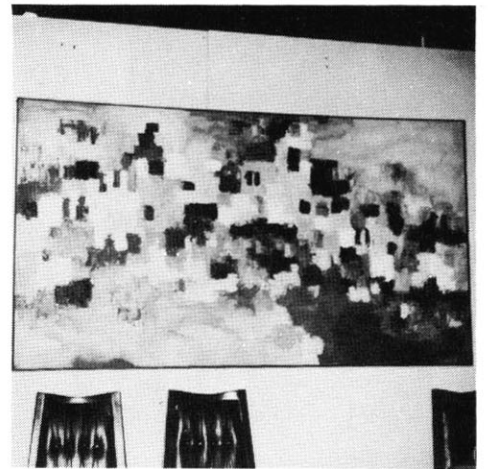
\* PA-4



\* PA-4



\* PA-4



\* PA-4



\* PA-7



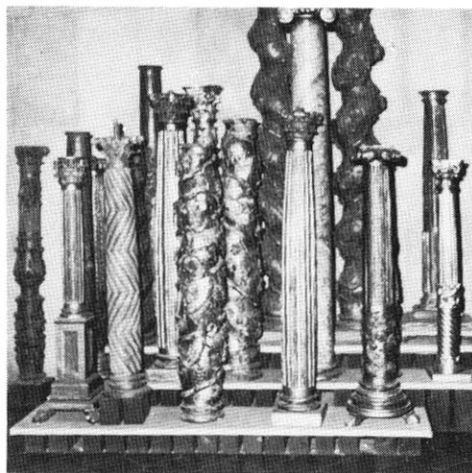
\* PA-7



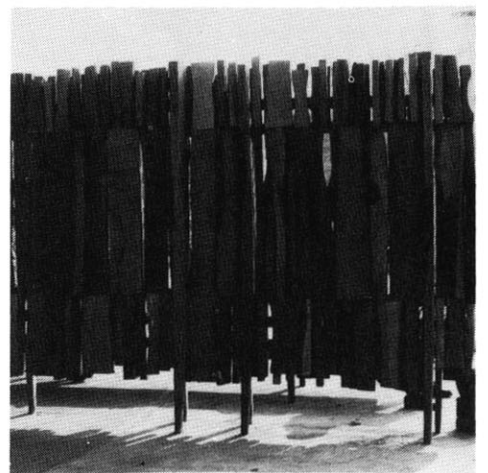
\* PA-8



\* PA-10



\* PA-11 to PA-25



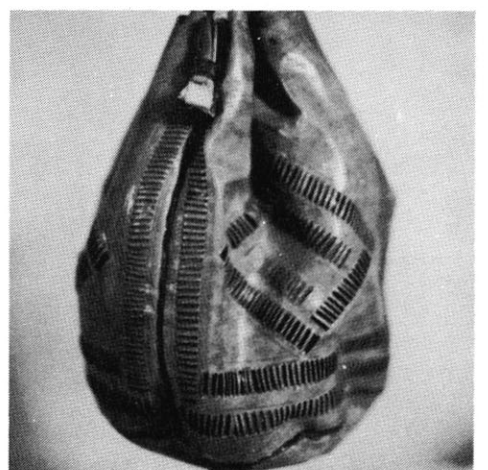
\* PA-26



\* PA-27

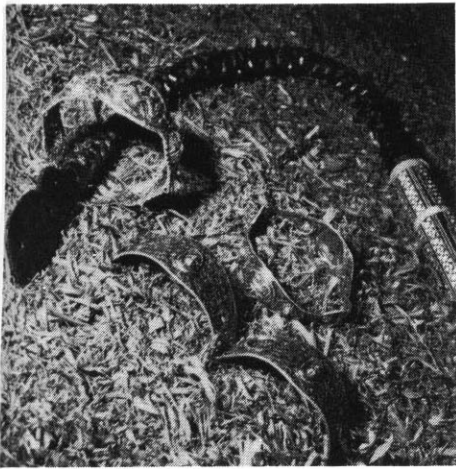


\* W-5

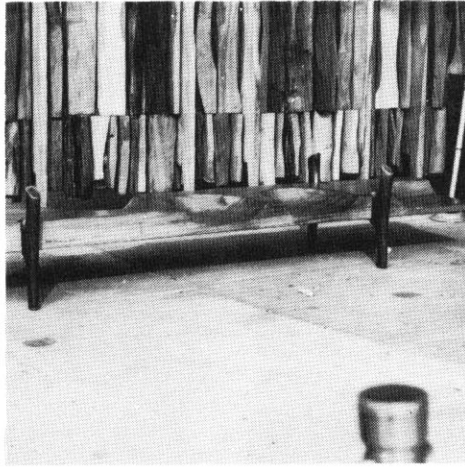


\* W-8

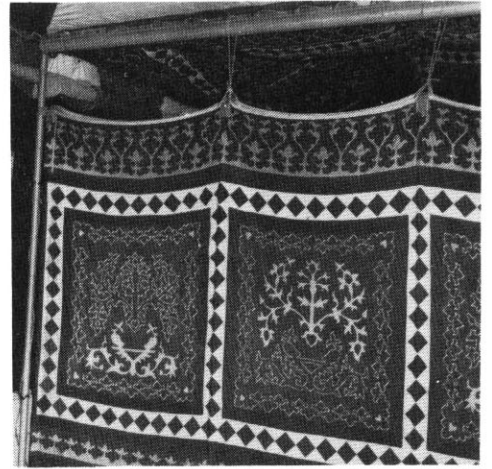




\* W-15



\* G-2



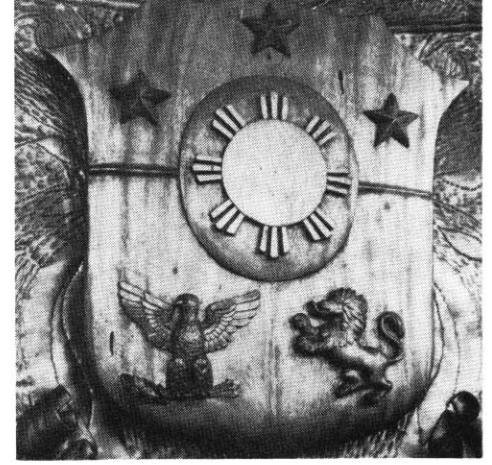
\* G-3



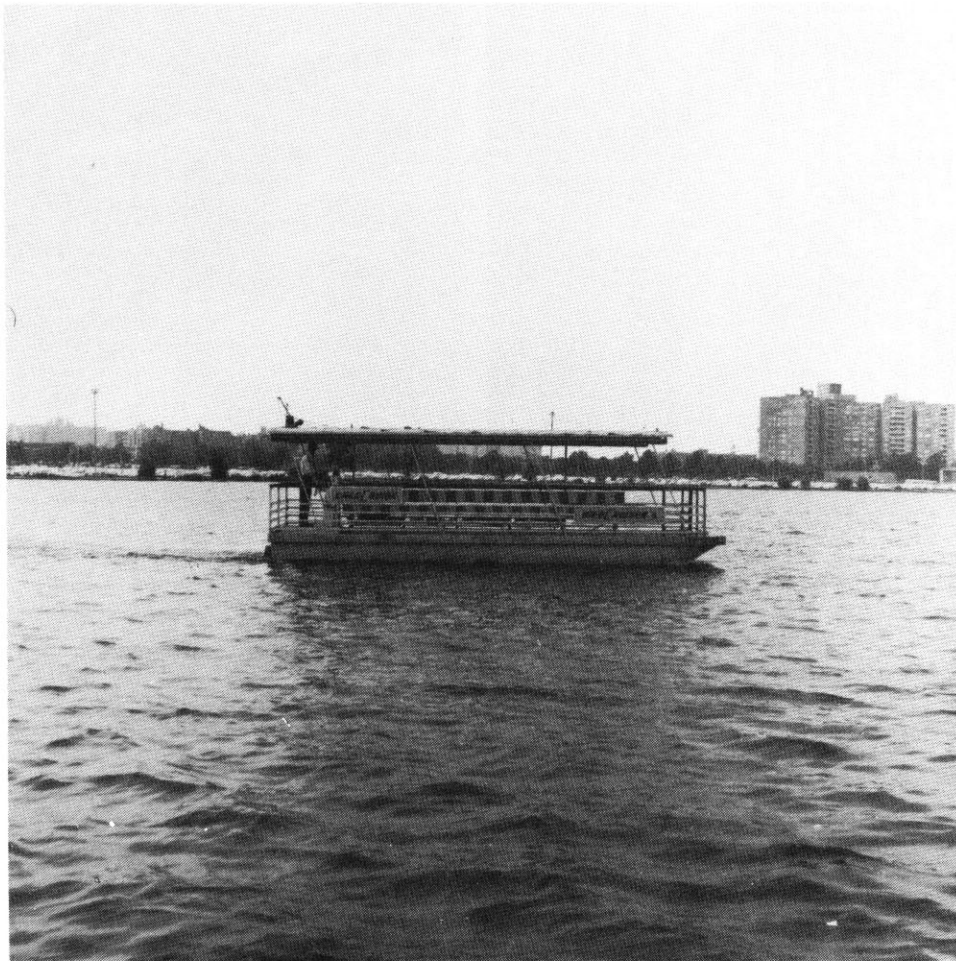
\* G-4



\* G-5



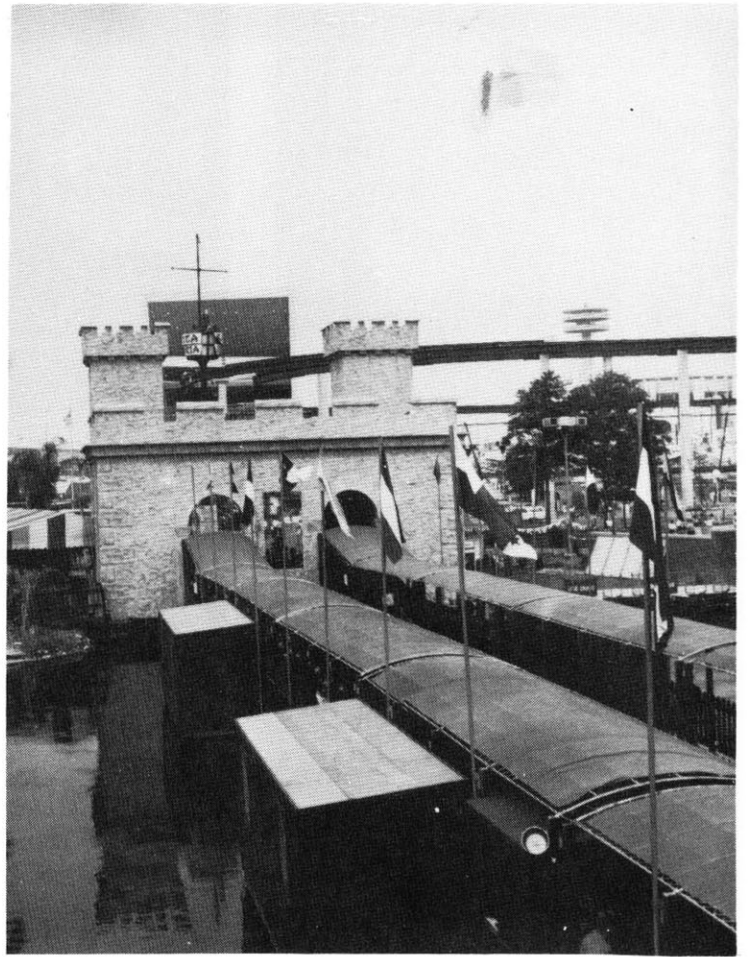
\* G-22



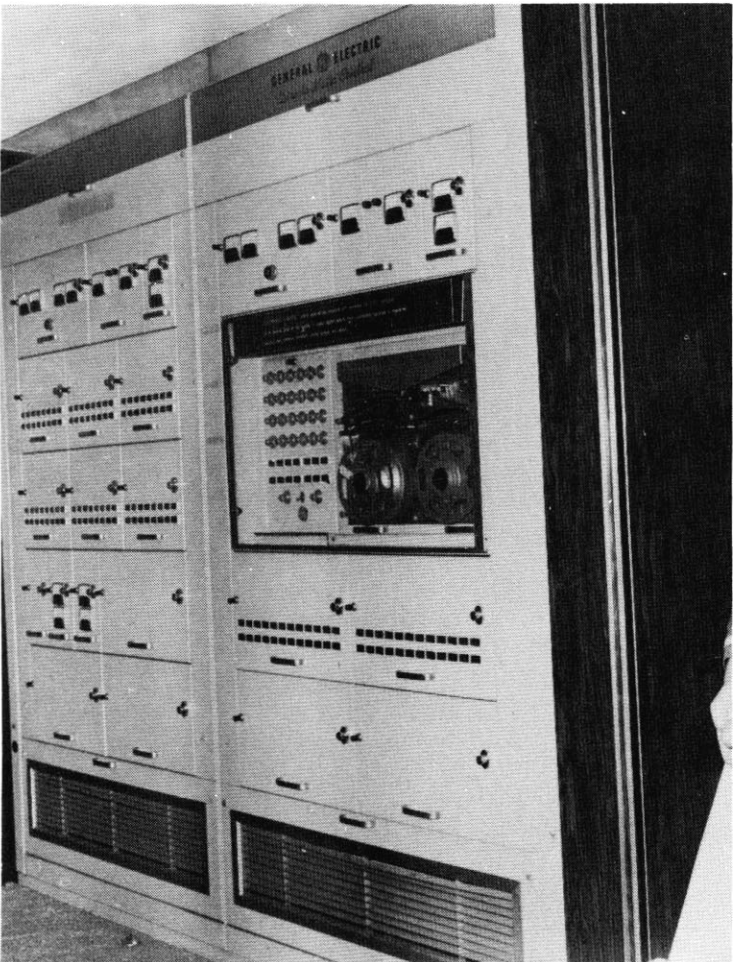
\* S-5



\* S-7



\* S-15



\* S-4





PLEASE READ FOLLOWING INFORMATION REGARDING PURCHASE OF ITEMS LISTED IN THIS CATALOG

1. All of the property listed herein is being offered for sale by the named Pavilions or their representatives (the SELLERS) and not by the publishers of this catalog, George E. Porcell Enterprises, Inc. All descriptions and information about such property have been supplied by, and are the responsibility of, the SELLERS, and NOT of George E. Porcell Enterprises, Inc. While all reasonable efforts have been made to insure the accuracy of such descriptions and information, no representations thereto or in connection therewith are made herein by the publisher or the SELLERS.
2. All of the property listed herein is subject to prior sale by the SELLERS at any price, any time, and upon any terms and conditions which the SELLERS may impose. No representations or warranties are made as to the price, cost, condition, fitness for use, or availability of such property.
3. All persons interested in the property are urged to inspect the same. Notwithstanding such inspection or the omission thereof, all property listed herein is offered on an "AS IS" and "WHERE IS" basis, and subject to the terms and conditions of the SELLER as to payment and removal.
4. The publisher of this catalog accepts no responsibility for and makes no representations or warranties as to the property listed herein, its availability, conditions or utility or the SELLER'S title thereto and right to make such sale. All sales and negotiations therefore are made directly with the SELLERS and are subject to whatever conditions may be imposed by the SELLERS.

Copyright, GEORGE E. PORCELL ENTERPRISES, INC., 1965

## FINDING OUT WHERE AND HOW TO BUY WHAT

IMPORTANT: The legal responsibilities of the publishers and the actual sellers of the merchandise listed herein are defined on PAGE SEVENTY-NINE in the section entitled "INFORMATION REGARDING PURCHASE OF ITEMS."

### A FEW EXPLANATORY NOTES ON OUR LISTING FORMAT

The items listed for sale are grouped, into general categories, and also within the categories themselves, according to similarity of function rather than alphabetical order. The two exceptions to the criteria of general similarity are the SPECIAL ITEMS and GRAB BAG categories. The former consists of items that belong together because their uniqueness, enormous size, or extraordinary original cost make them especially interesting. The latter category is made up of odds and ends, large and small, that will not submit gracefully to any other heading. Each item has been assigned a coded ITEM NO., to facilitate cross referencing the text with the photographs that appear in their own separate section of the catalog. These numbers were NOT intended for use in ordering individual articles through the mail.

To the right of the ITEM NO., under the heading QUANTITY, is a rough inventory of the number of items for sale. These quantities are necessary approximations because everything listed herein is subject to prior sale by the pavilions or their agents.

The DESCRIPTION is designed to give the reader a general idea of the nature and quality of the merchandise, with the understanding that the pavilions have agreed, from time to time, to permit all prospective purchasers to examine the merchandise and to forthrightly and truthfully advise all such prospective purchasers of its condition and fitness for use.

Unless otherwise instructed in the column under PAVILION & INSPECTION TIME, the prospective purchaser is advised to contact the manager of the pavilion from which he desires to make a purchase. In general, these managers will be available at their respective pavilions all week long, from 10 A.M. to 10 P.M., until the World's Fair closes. After that, most business will be conducted at the Fair on a Monday through Friday, 9 A.M. to 5 P.M. basis. Pavilion managers can be reached by mail or telephone. For information regarding pavilion telephone numbers, call: area code 212, 888-1212.

The ASTERISKS that the reader will find interspersed throughout the text, next to the ITEM NO., denote that a photograph of that object appears on the page indicated at the end of the DESCRIPTION.

The publisher and editor wish the reader success in finding and purchasing his heart's desire, whether it be a carousel, an elk, or an elephant-foot stool.