

NEW YORK WORLD'S FAIR 1964-1965

FLUSHING MEADOW PARK

EMERGENCY TELEPHONE

LEGEND

- 2-70

AT SERPENTINE LOCATIONS
- ◻ 0111

LOCATIONS OTHER THAN SERPENTINE
- 2-83

EMERGENCY TELEPHONE WITH POLICE CIRCUIT
- ◐ 0184

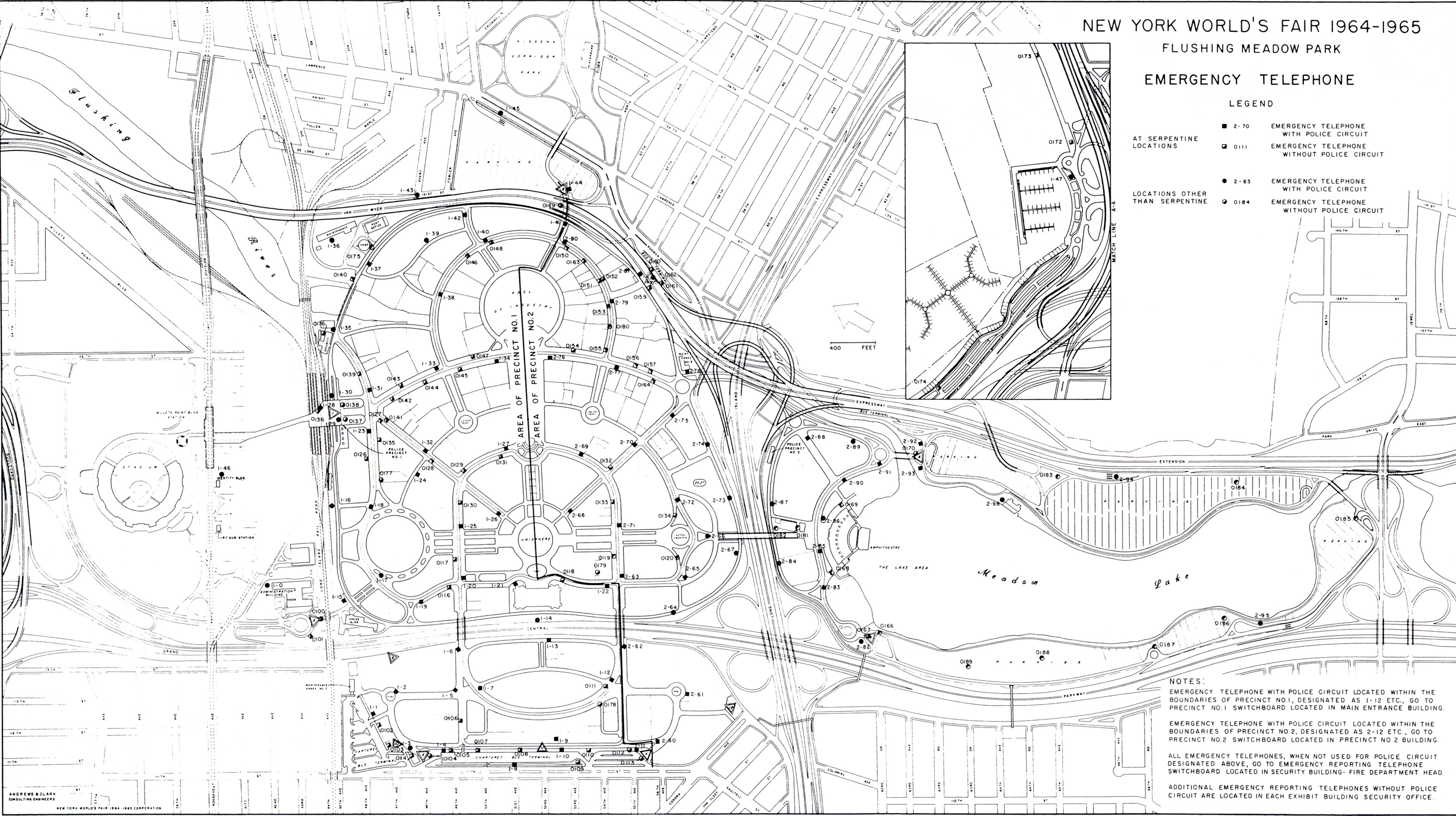
EMERGENCY TELEPHONE WITHOUT POLICE CIRCUIT
- 2-70

EMERGENCY TELEPHONE WITH POLICE CIRCUIT
- ◻ 0111

EMERGENCY TELEPHONE WITHOUT POLICE CIRCUIT
- 2-83

EMERGENCY TELEPHONE WITH POLICE CIRCUIT
- ◐ 0184

EMERGENCY TELEPHONE WITHOUT POLICE CIRCUIT



NOTES:

EMERGENCY TELEPHONE WITH POLICE CIRCUIT LOCATED WITHIN THE BOUNDARIES OF PRECINCT NO.1, DESIGNATED AS 1-12 ETC., GO TO PRECINCT NO.1 SWITCHBOARD LOCATED IN MAIN ENTRANCE BUILDING.

EMERGENCY TELEPHONE WITH POLICE CIRCUIT LOCATED WITHIN THE BOUNDARIES OF PRECINCT NO.2, DESIGNATED AS 2-12 ETC., GO TO PRECINCT NO.2 SWITCHBOARD LOCATED IN PRECINCT NO.2 BUILDING.

ALL EMERGENCY TELEPHONES, WHEN NOT USED FOR POLICE CIRCUIT DESIGNATED ABOVE, GO TO EMERGENCY REPORTING TELEPHONE SWITCHBOARD LOCATED IN SECURITY BUILDING- FIRE DEPARTMENT HEAD.

ADDITIONAL EMERGENCY REPORTING TELEPHONES WITHOUT POLICE CIRCUIT ARE LOCATED IN EACH EXHIBIT BUILDING SECURITY OFFICE.