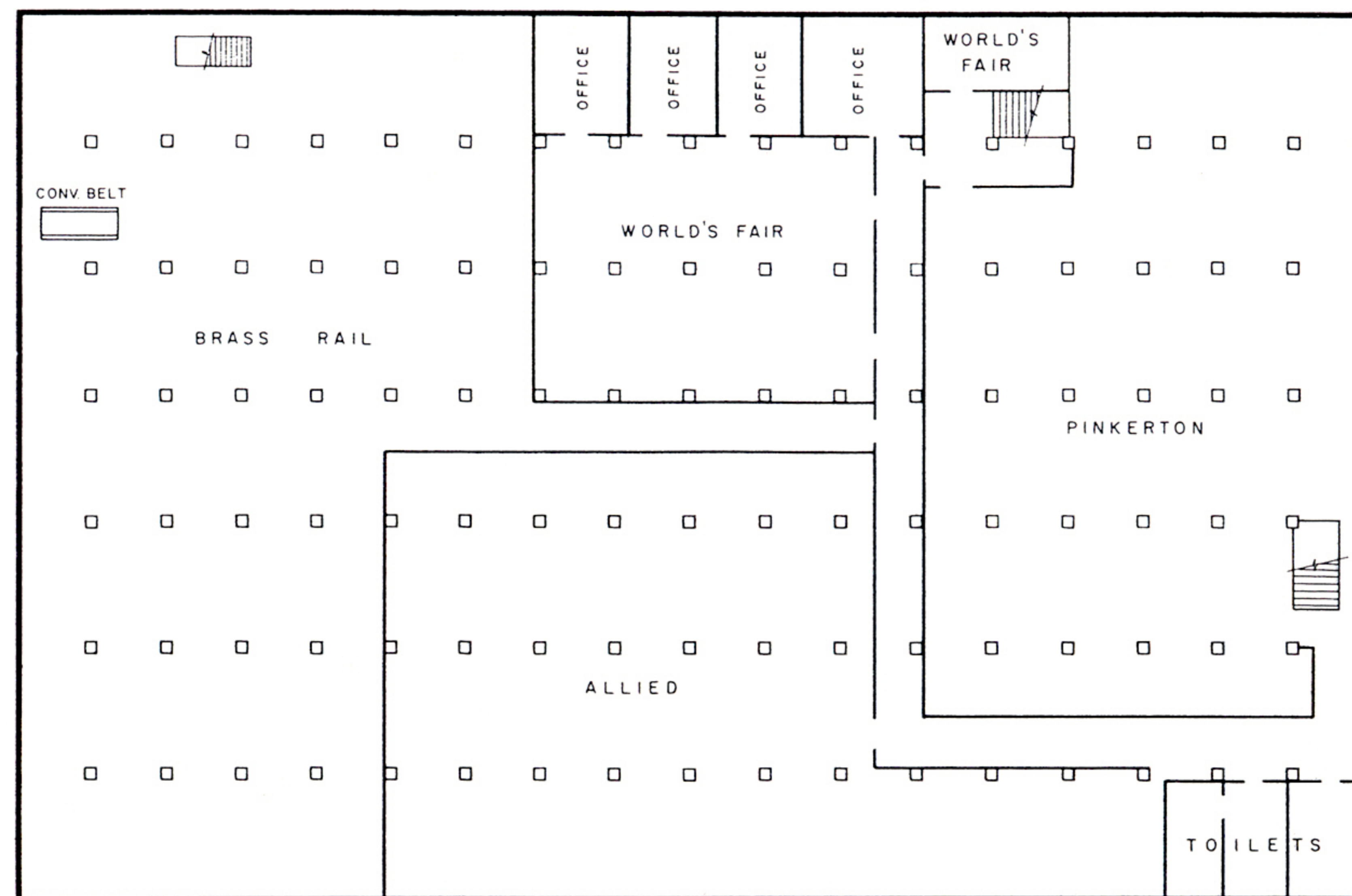


NEW YORK WORLD'S FAIR 1964-1965
FLUSHING MEADOW PARK

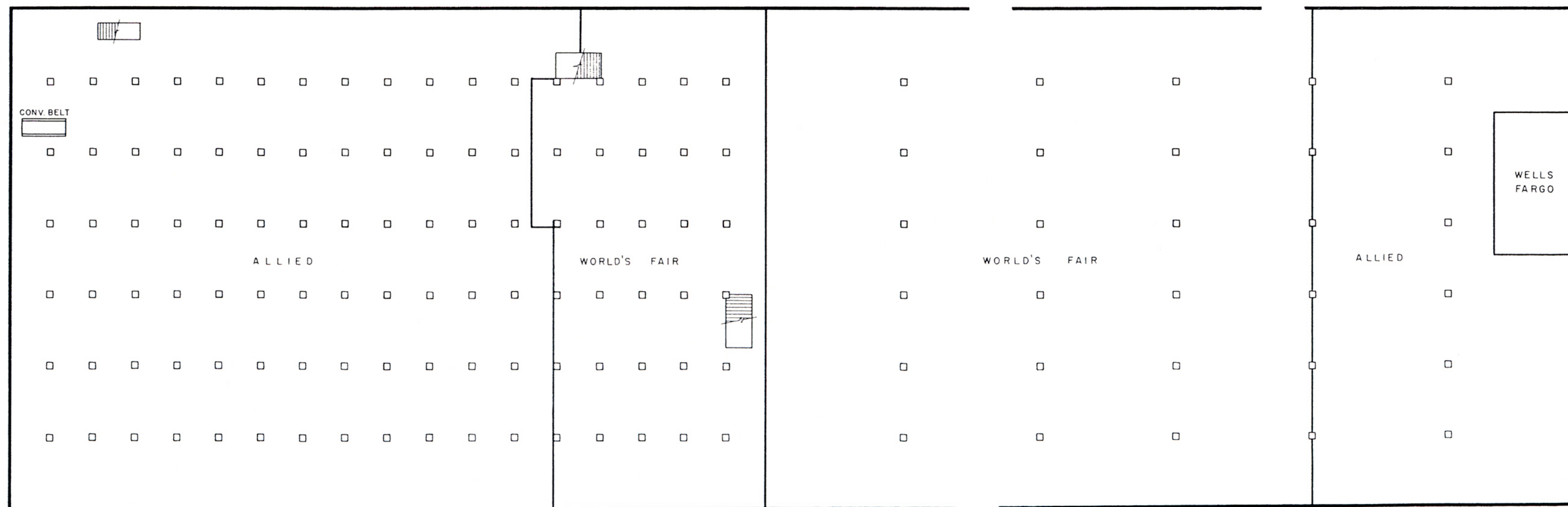
WORLD'S FAIR SERVICE BUILDING



SECOND FLOOR



OCCUPANT	SQUARE FOOTAGE	PERCENT
WORLD'S FAIR	34,582	38
WELLS FARGO	1,000	1
ALLIED	38,028	42
BRASS RAIL	10,520	11
PINKERTON	7,496	8
TOTAL	91,626	100



FIRST FLOOR

March 23, 1964

ANDREWS & CLARK
CONSULTING ENGINEERS

© 1960, 1961, 1962, 1963, 1964, NEW YORK WORLD'S FAIR, 1964-1965 CORPORATION