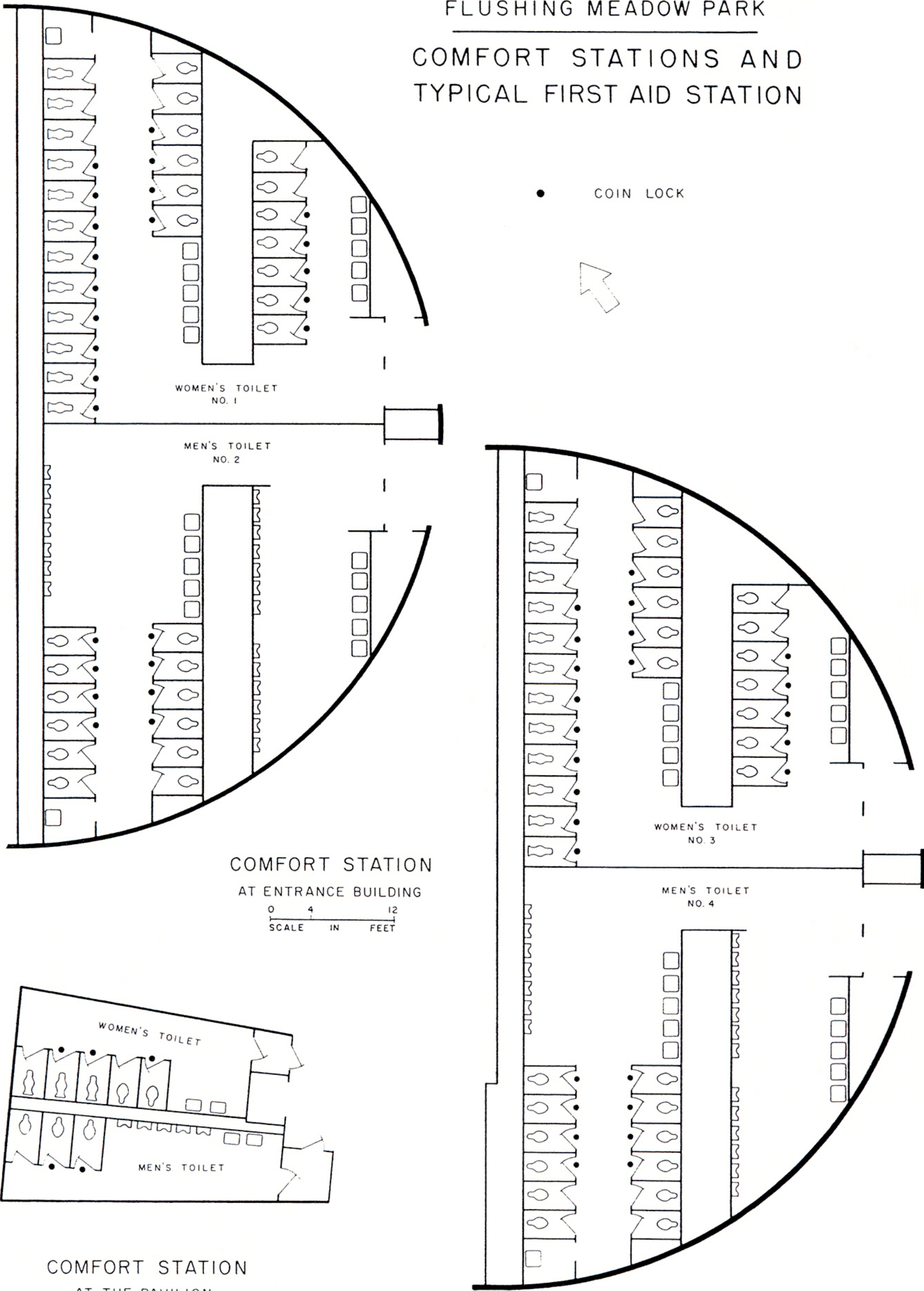


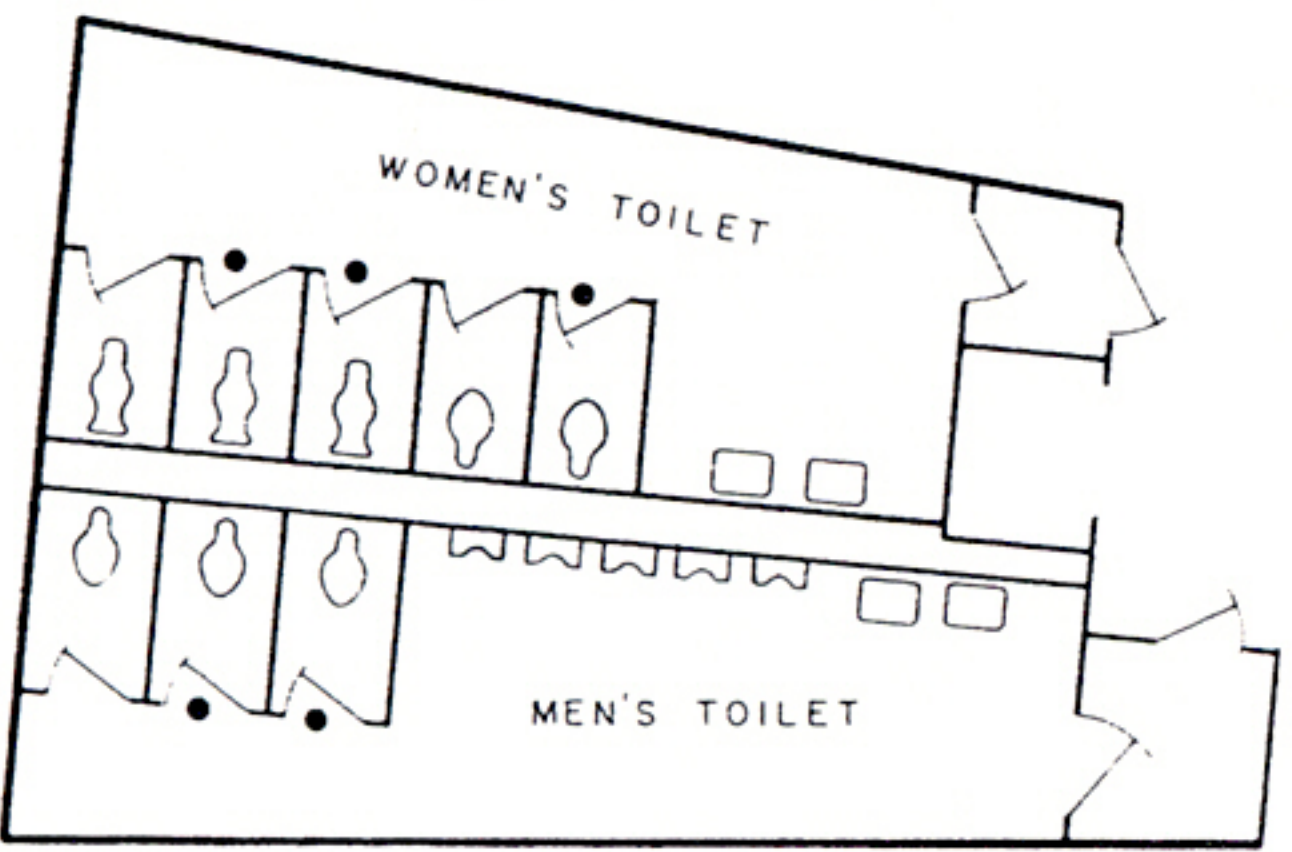
NEW YORK WORLD'S FAIR 1964-1965
FLUSHING MEADOW PARK

COMFORT STATIONS AND
TYPICAL FIRST AID STATION

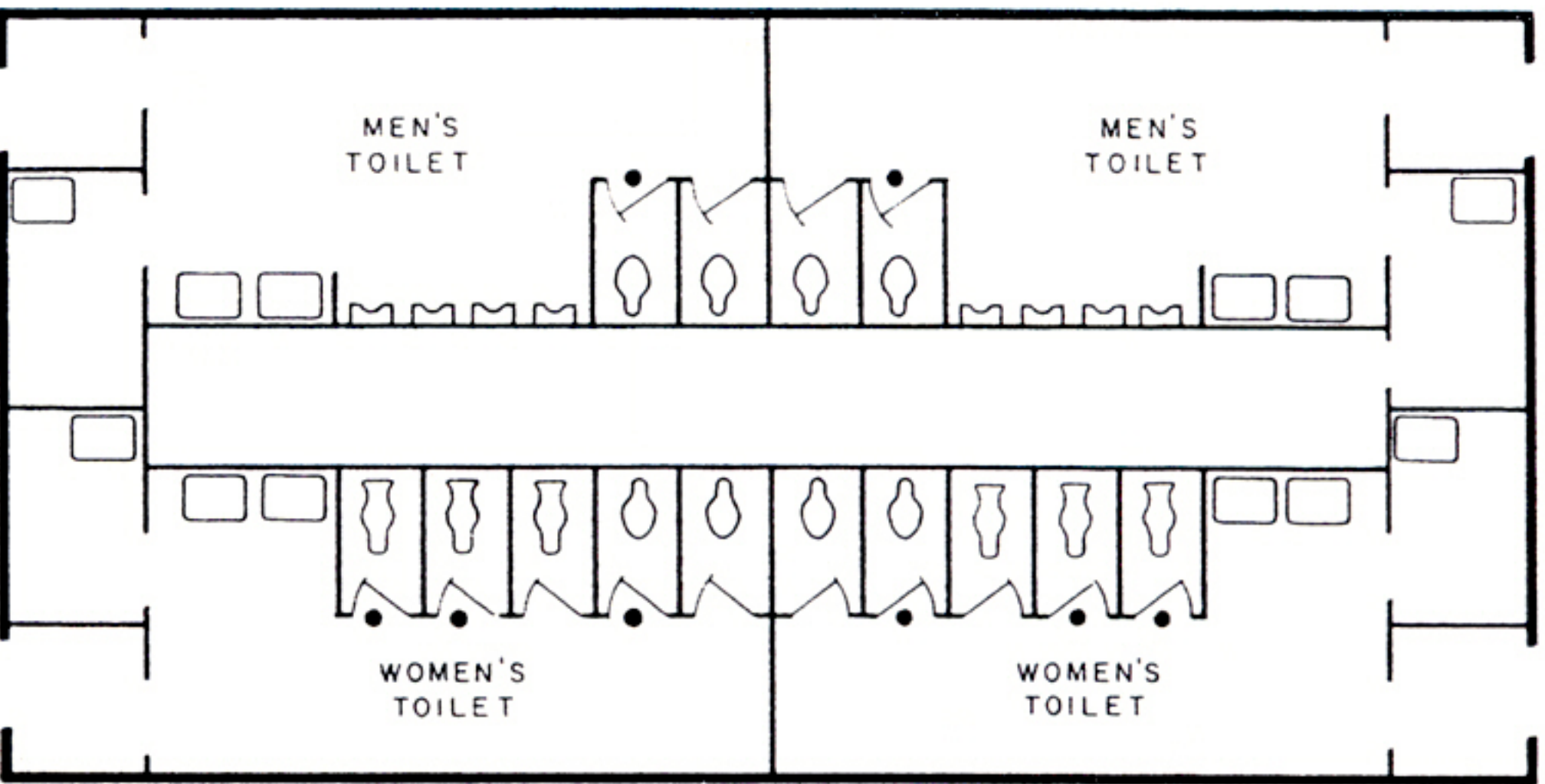
• COIN LOCK



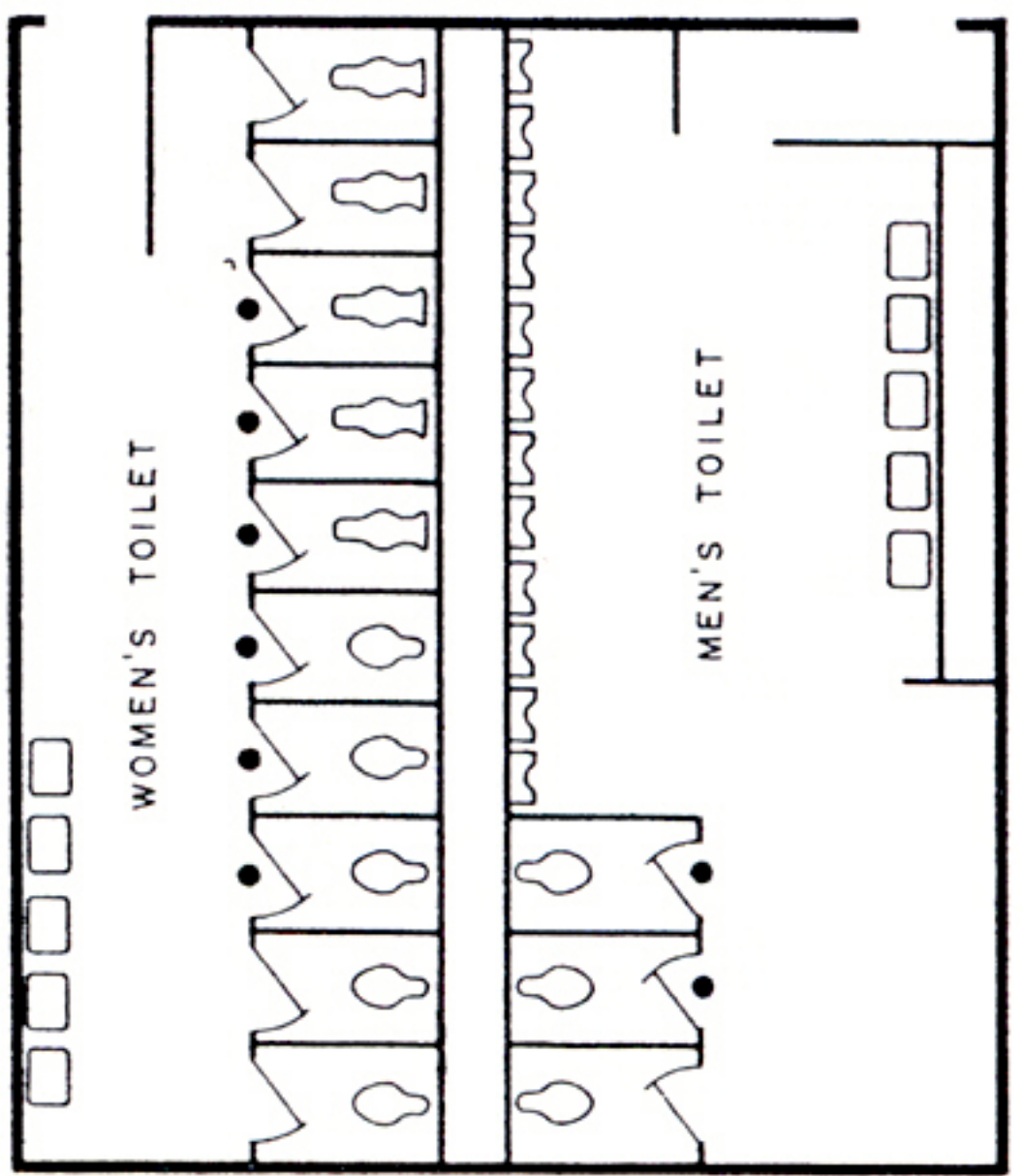
COMFORT STATION
AT ENTRANCE BUILDING
0 4 12
SCALE IN FEET



COMFORT STATION
AT THE PAVILION
0 4 12
SCALE IN FEET



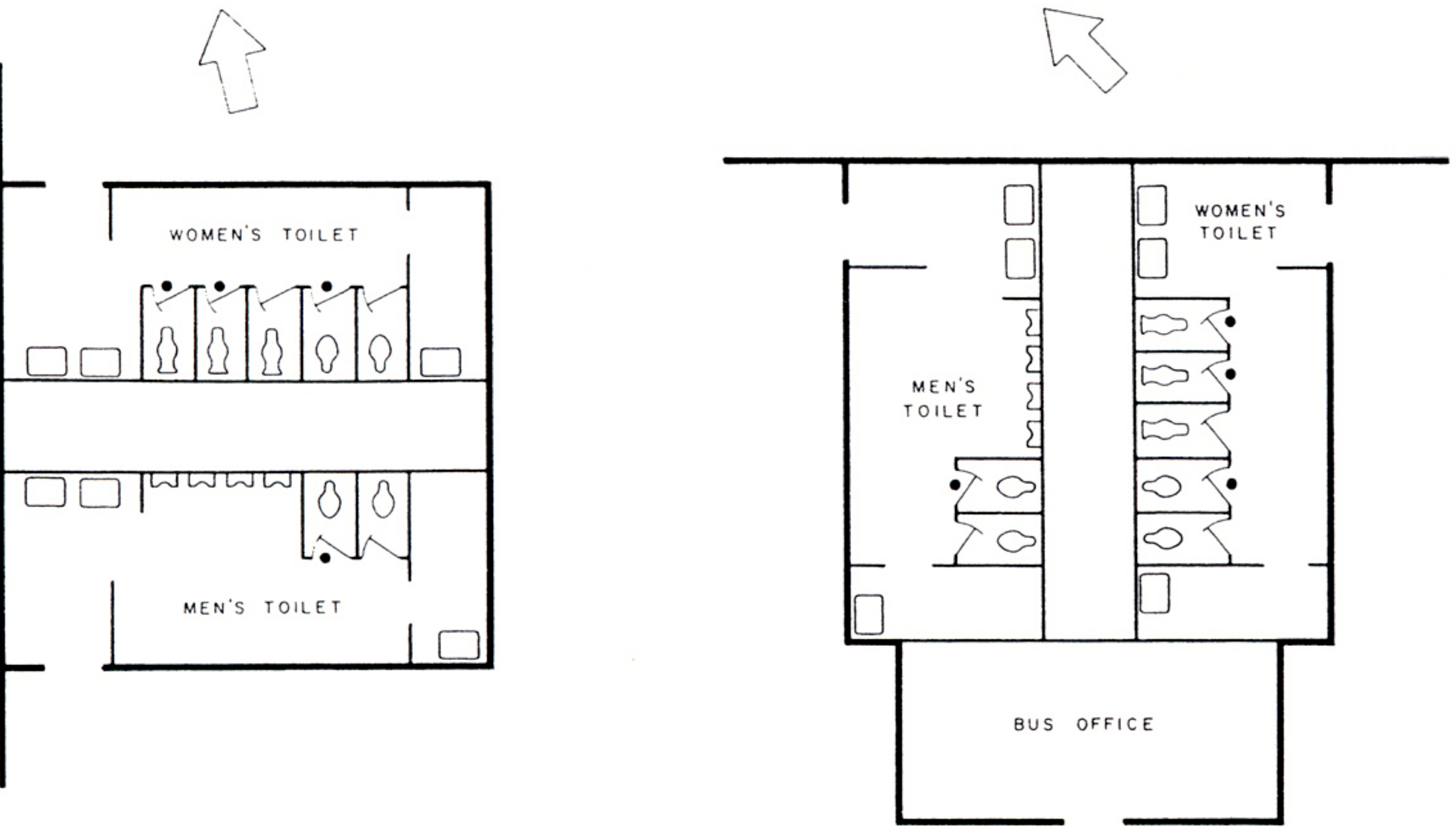
COMFORT STATION
AT RODMAN STREET
0 4 12
SCALE IN FEET



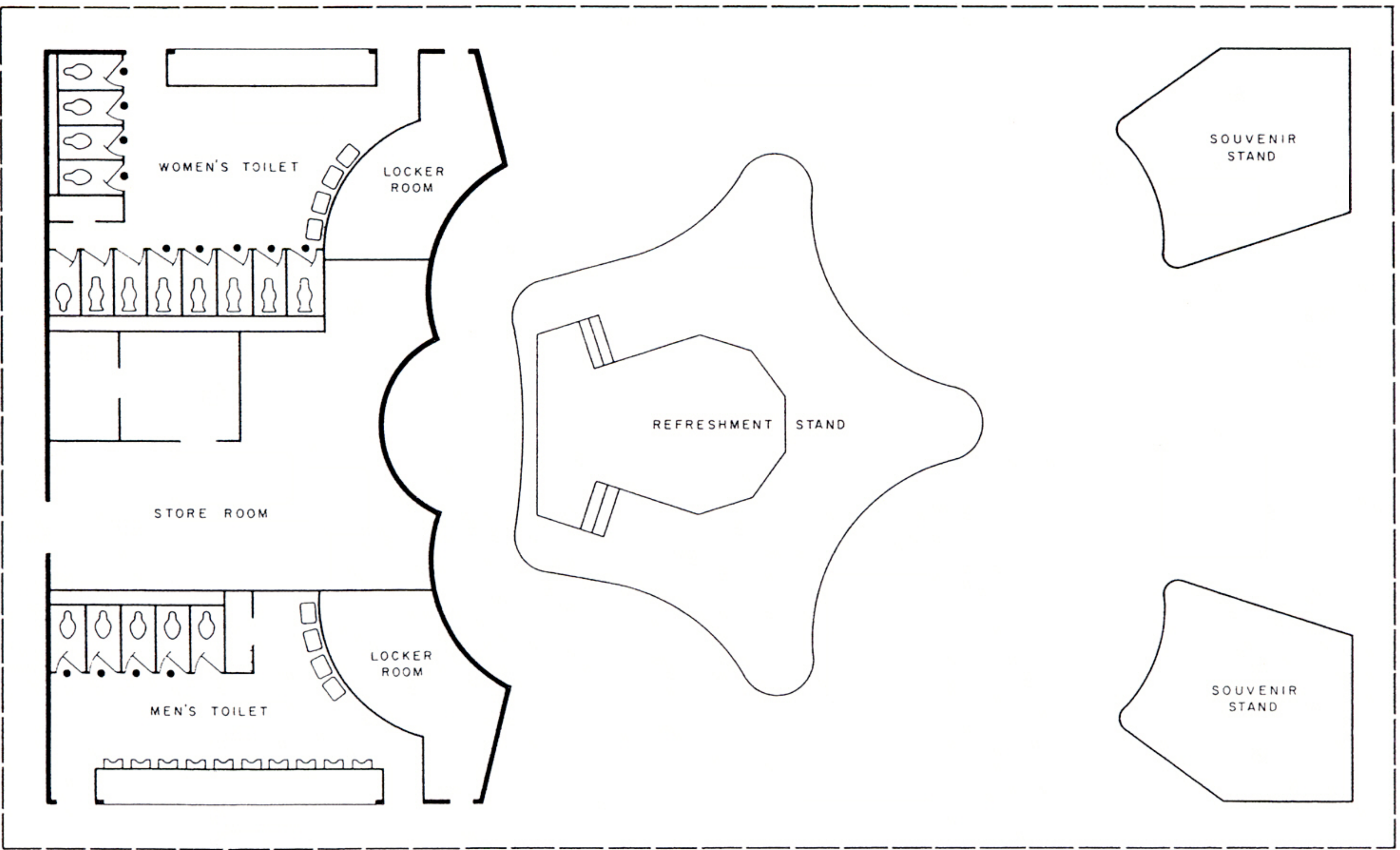
COMFORT STATION
AT THE ARENA
0 4 12
SCALE IN FEET



TYPICAL FIRST AID
STATION
0 4 8
SCALE IN FEET



NORTH COMFORT STATION
SOUTH COMFORT STATION
AT 111TH STREET BUS TERMINAL
0 4 12
SCALE IN FEET



COMFORT STATION
AT TYPICAL REFRESHMENT UNIT COMPLEX
0 4 12
SCALE IN FEET

NOTE:

There is a total of 25 Refreshment
Unit Complexes and 5 First Aid
Stations.

March 23, 1964

ANDREWS & CLARK
CONSULTING ENGINEERS

© 1960, 1961, 1962, 1963, 1964, NEW YORK WORLD'S FAIR 1964-1965 CORPORATION