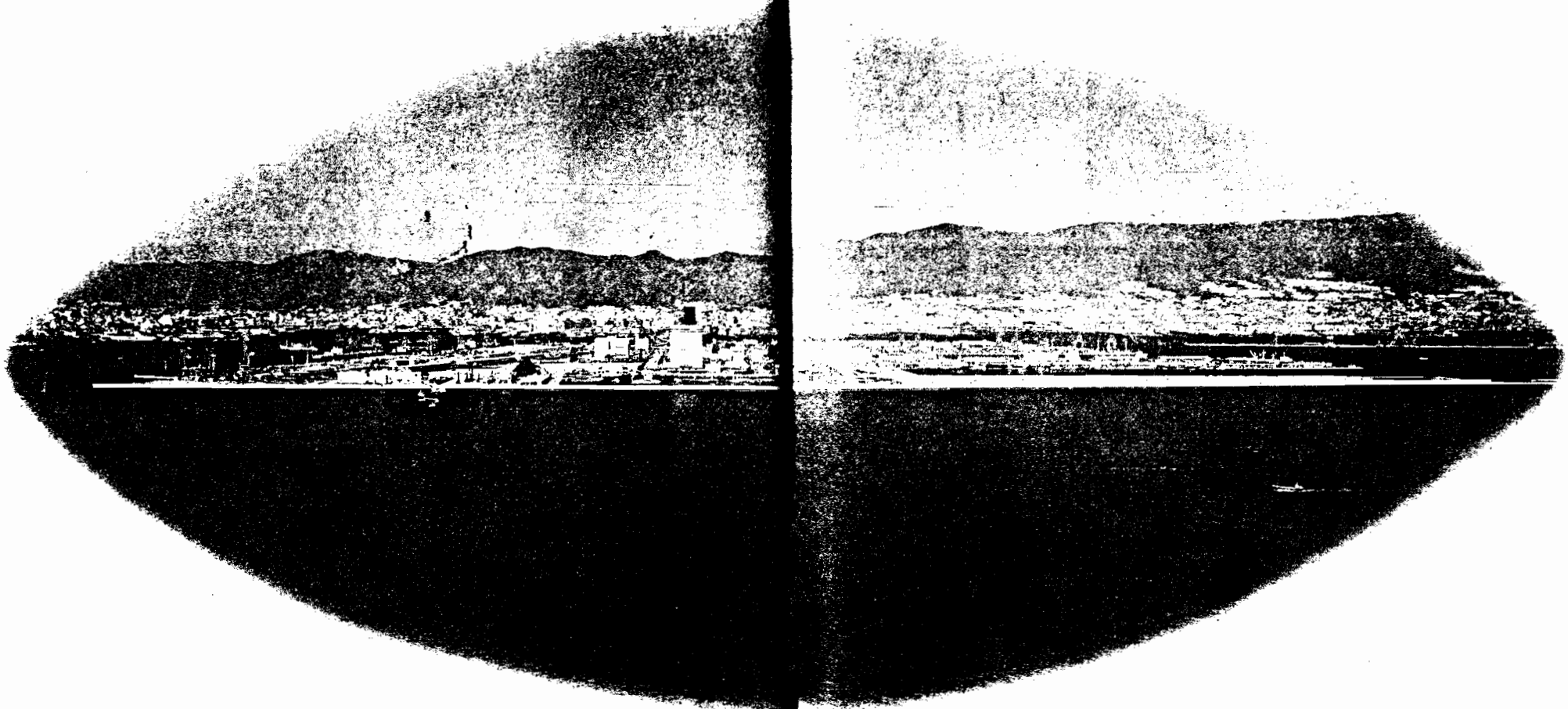


main theme **Creation of a New "Cultural City on the Sea"**



**PORTOPIA '81 Emblem**

In order to have the Kobe Port Island Exposition widely understood and correctly recognized, this Symbol was adopted on January 23, 1979. The composition consists of abstract representations of the forms of light and waves. Light embodies the world of creation. Waves express progress and development. Simple and yet powerful, it represents the theme and is unique, arresting, and appropriate for this Exposition. It was created by graphic designer Fumio Koyoda.