

• A SOUVENIR PICTURE BOOK OF •

WASHINGTON, SEATTLE and the SEATTLE WORLD'S FAIR





1. SEATTLE WORLD'S FAIR
2. PORT OF SEATTLE HEADQUARTERS
3. MARION-MADISON STS.: STATE FERRIES
4. RAILROAD CENTER
5. CITY HALL CITY LIBRARY U.S. COURT HOUSE
6. WORLD'S FAIR MONORAIL DEPOT
7. LAKE UNION
8. UNIVERSITY OF WASHINGTON
9. FREEWAY - UNDER CONSTRUCTION
10. AURORA BRIDGE AND SHIP CANAL
11. PIER 91 - NAVAL SUPPLY DEPOT
LONGEST EARTH-FILLED PIER IN THE WORLD.

12. WOODLAND PARK ZOO
13. GREEN LAKE - AQUA THEATRE
14. BOTHELL
15. SAND POINT NAVAL AIR STATION
16. KIRKLAND
17. EVERGREEN POINT FLOATING BRIDGE
18. UNIVERSITY OF WASHINGTON ARBORETUM
19. LAKE WASHINGTON BOULEVARD
20. BELLEVUE
21. FLOATING BRIDGE - MERCER ISLAND
22. INDUSTRIAL DISTRICT
23. HARBOR ISLAND - SHIPYARDS

NORTHWEST AIR PHOTOS
PORT ORCHARD

THE SEATTLE WORLD'S FAIR shows life as expected in the year 2000, against a display of man's accomplishments today.

CENTURY 21 EXPOSITION has as its theme "Man in Space" and has breathtaking displays of space-age wonders in all the phases of living, at work, play and learning.

This is the first international exposition to be held in the United States for 23 years and has the sanction of the Bureau of International Expositions.

Aerial Photo by James F. Wilson, Port Orchard - Map design by Puget Sounders Inc., a non-profit state development organization, Seattle.
Color photos by: J. Boyd Ellis, Clifford B. Ellis, Jan Doward, Bob & Ira Spring, Ruth Kirk, Eric Wahleen, John S. Crawford, Seattle World's Fair and Yang Photographers.
Pub. by Ellis Post Card Co., Arlington, Wash.

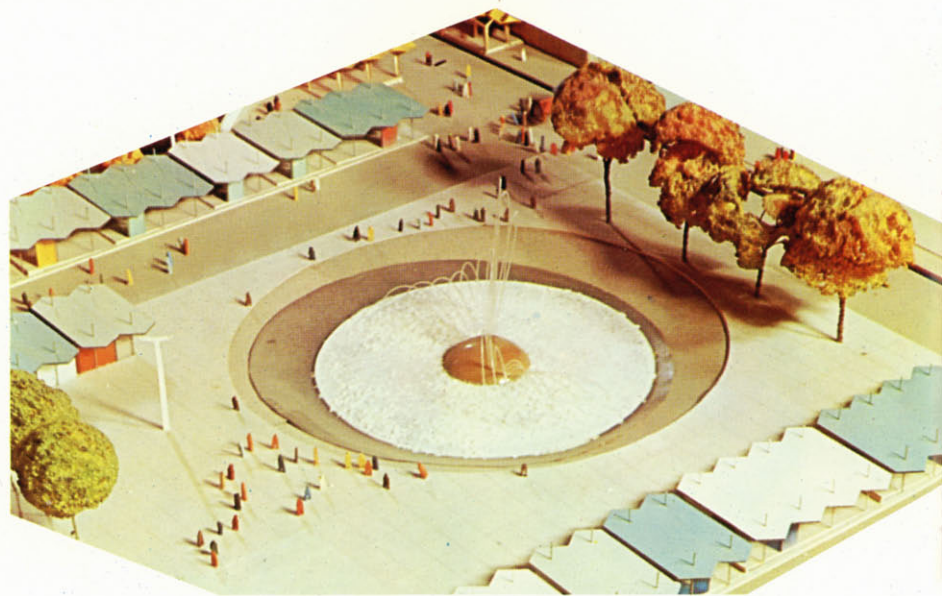
dp

Litho in U.S.A.
DEXTER PRESS, INC.
West Nyack, New York
and Long Beach, Calif.



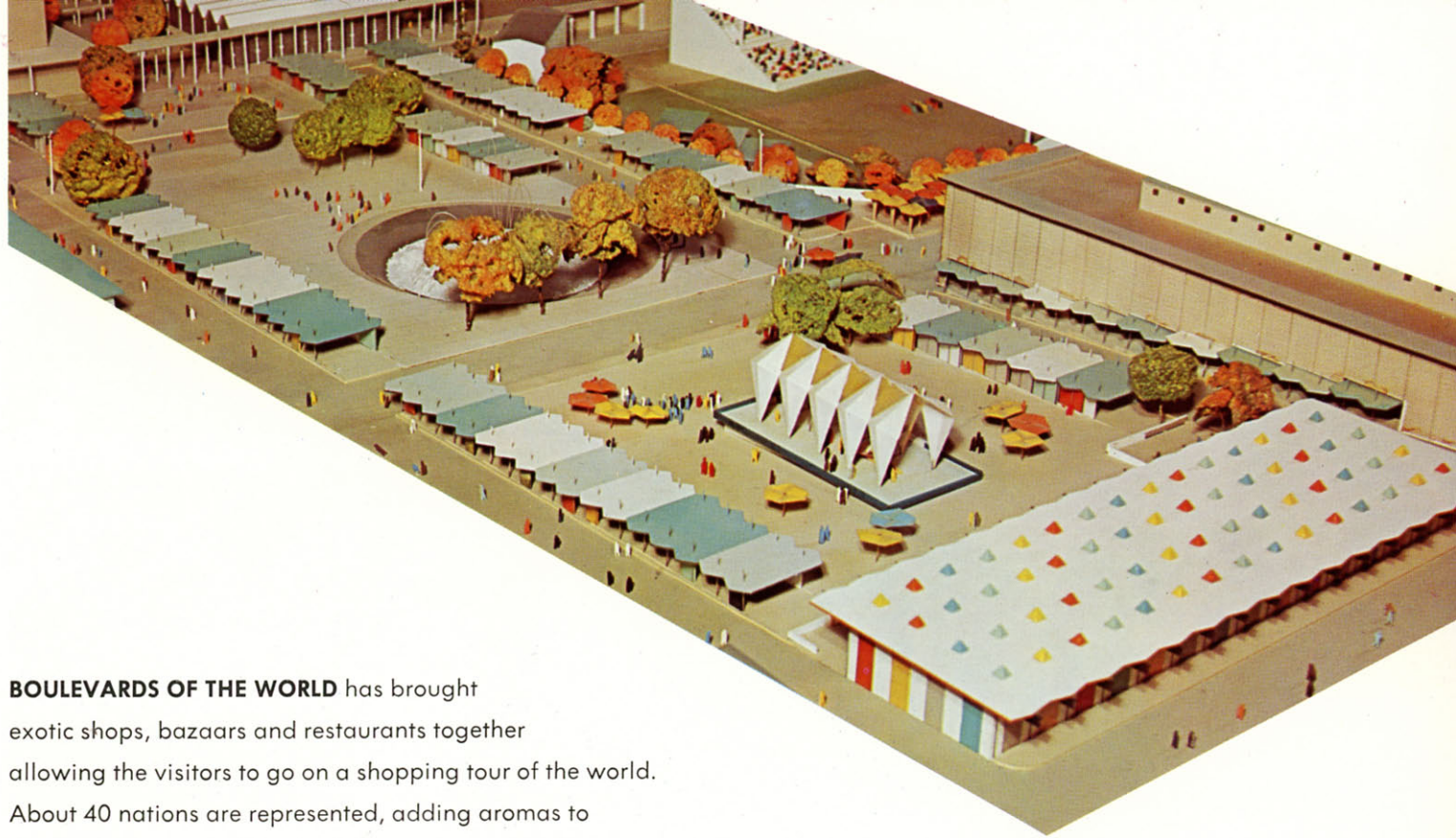
THE SPACE NEEDLE is the most dominating feature in the skyline of Century 21 Exposition, America's Space Age World's Fair. It rises to the height of 600 feet and is topped by a restaurant which revolves 360° every hour. About 260 persons can be served. An observation deck and snack service is also atop the Needle for those who wish to feast mostly on the tremendous scenic panorama. This structure represents a private investment of nearly \$4,000,000.



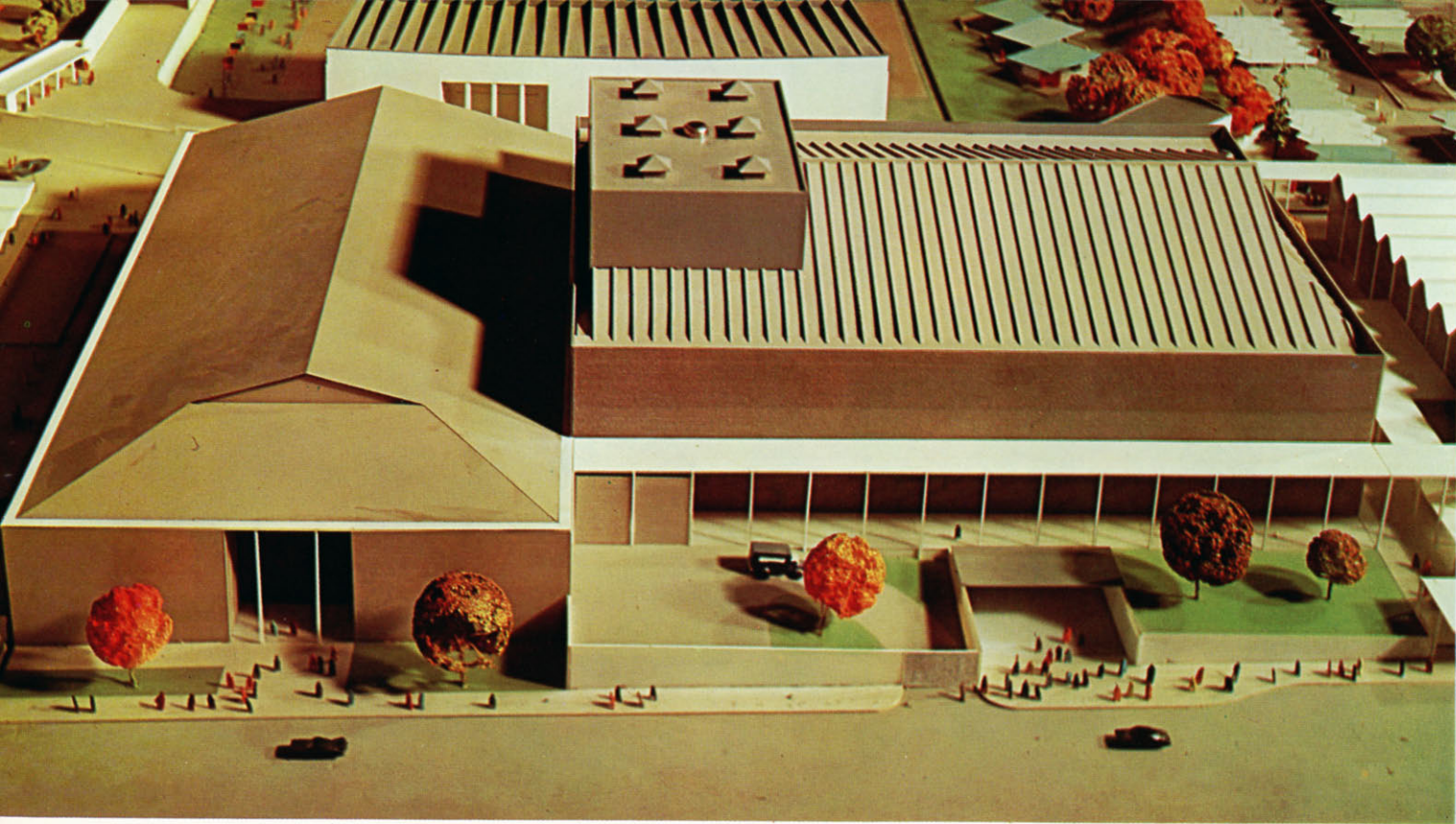


This Fountain was chosen from international competition of 265 entries from 11 nations. It was designed by Hideki Shimizu and Kazuyuki Matsushita, young designers from Japan. The water rises from a bowl 100 feet across and the varied designs of water columns are controlled by electronic tape or can be improvised by manual keyboard with heights to 100 feet. Colored lighting is coordinated with the changing water patterns.

◀ **SHOPS along Boulevards of the World.**



BOULEVARDS OF THE WORLD has brought exotic shops, bazaars and restaurants together allowing the visitors to go on a shopping tour of the world. About 40 nations are represented, adding aromas to the wind of seasoned foods of east and west or pleasing color from their styles and culture.



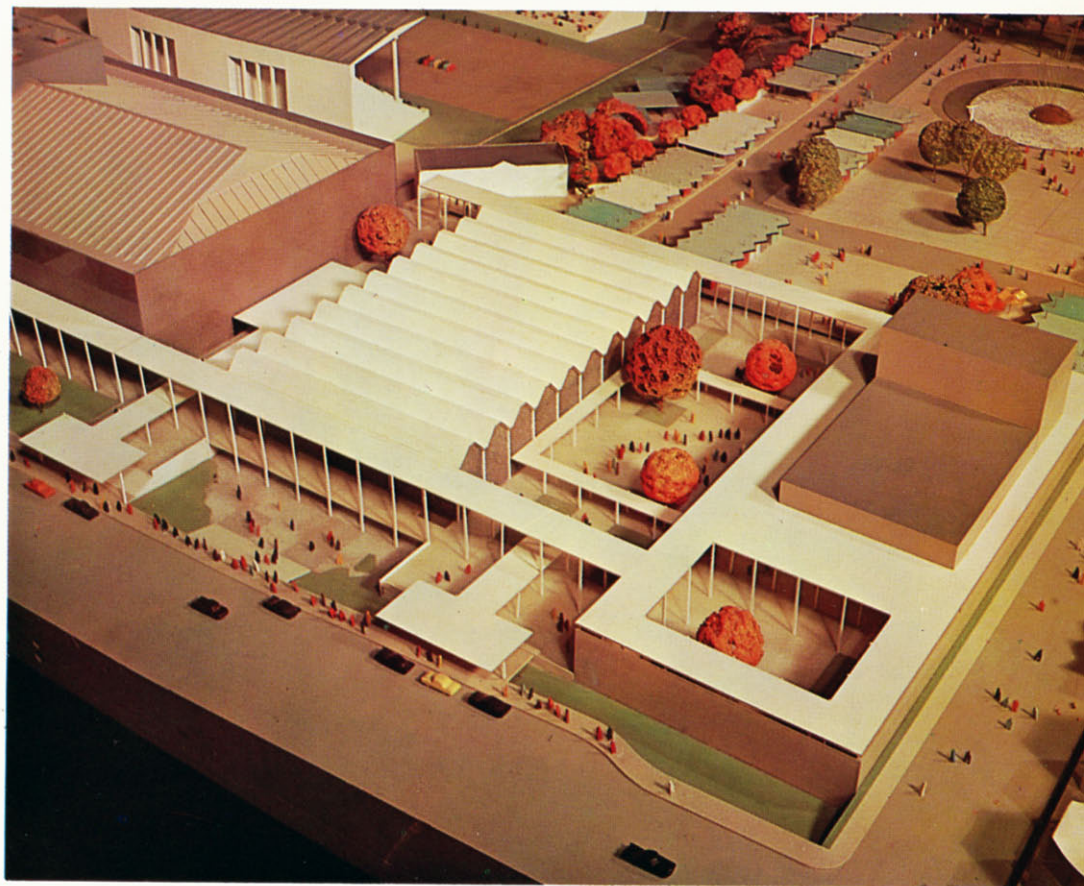
5,500-SEAT ARENA and **3,100-SEAT CONCERT HALL** are the scenes of varied sports events and cultural entertainments.

Every day is a special event composed of spectacular performances from home or abroad and appeals to the desires of young and old.

FINE ART EXHIBIT includes works of Old Masters, Contemporary Art since 1950 and outstanding sculpture and artifacts of Northwest Coast Indians.

Gems of Oriental and Middle Eastern Art, a Nationwide Arts and Crafts show, and an invitational show of Northwest regional artists completes the five major areas of display.

Insurance value of the Masterpieces of Art exhibits alone tops \$20,000,000.





THE GAYWAY

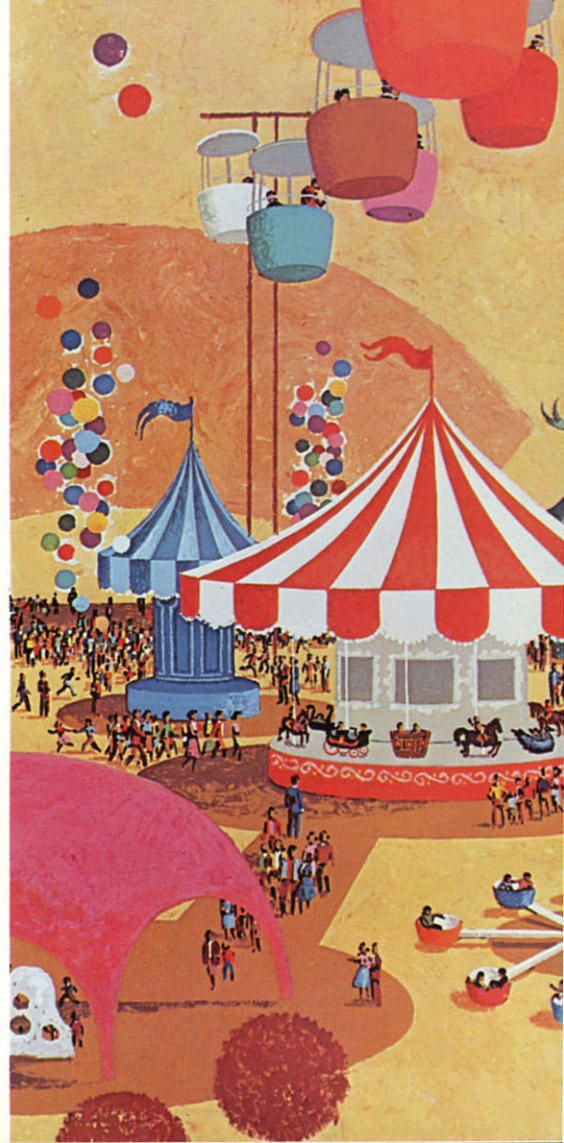
is a \$2,000,000 array of rides, the largest

amusement zone ever erected for a world's fair.

Among the rides are many custom-designed

in Germany and Italy portraying the amusement rides

in the 21st Century.





COLISEUM CENTURY 21,

the Washington State theme building covers almost four acres and depicts how man will live, work and play in the years of the 21st Century.

Visitors are lifted 100 at a time in the "bubbleator" to the "floating city" then down the inner corridor you wander to view products of the year 2,000's every day living, for example, a disposable house, cordless appliances that will cook, clean and iron along with disposable clothing, plastic shoes and winter garments light as a feather.

Included in this huge \$7,500,000 World of Century 21 exhibit is a car without wheels and a library of the future.

A look into tomorrow's transportation is being experienced at the Seattle World's Fair. The Alweg Monorail is capable of transmitting 10,000 passengers an hour to and from downtown Seattle and the exposition grounds, more than a mile, in 95 seconds. It operates independent and above surface traffic silently on rubber tired wheels and electric power.

Alweg has designed two trains for Seattle's Century 21. Train length is 120 feet and 10 feet width. A four-car train has 124 seats but during rush periods, including standees, it can carry 450 persons.

The terminals are equipped with moving belts or "speed ramps" that move the passengers to the elevated station platforms to board the trains.





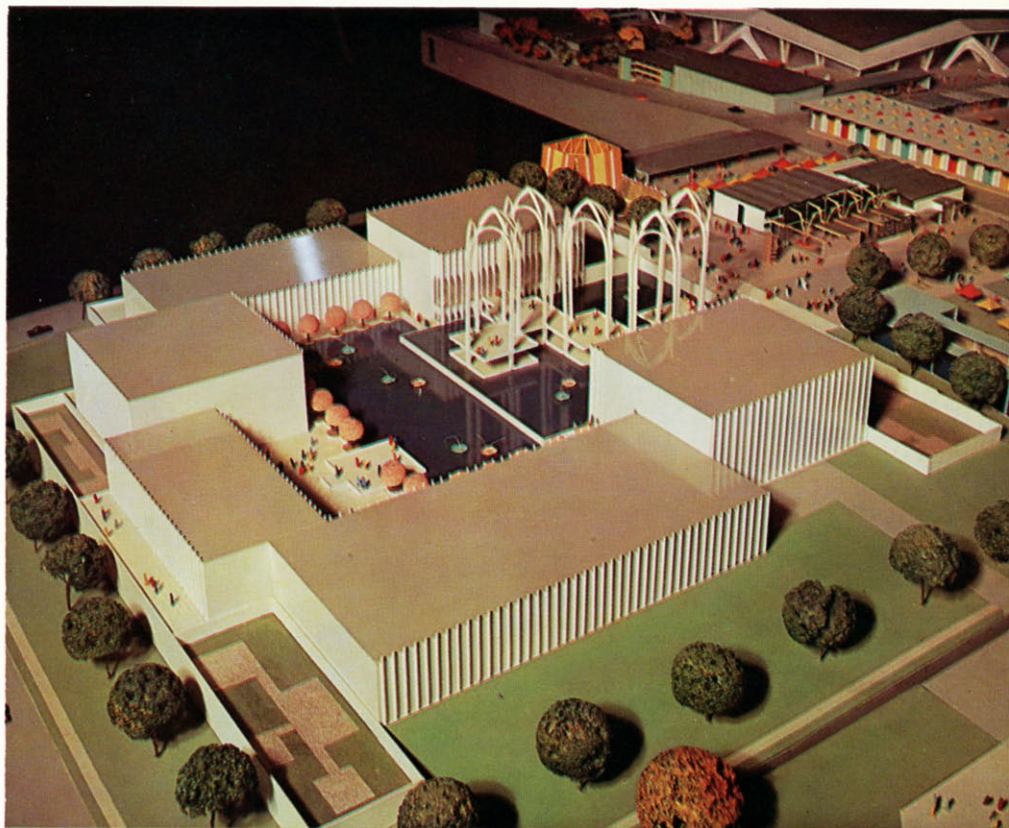
These modern designed buildings present a picture of the world's latest industrial and commercial developments.

INTERNATIONAL COMMERCE AND INDUSTRY PAVILIONS

UNITED STATES SCIENCE PAVILION

Beneath five arching towers representing man's constant striving for knowledge of the universe, visitors are being treated to the United States Government's \$9,000,000 world's fair program, a giant five-building pavilion and unique exhibits dedicated to showing the peaceful uses of science.

The Boeing Spacearium, one of the five areas in the World of Science pavilion, takes visitors on a spectacular 2 billion light year simulated flight through outer space. All that we know about Mars, Jupiter and Venus is depicted in glowing color as space objects, planets and bright stars pass by on all sides.





◀ **TATOOSH ISLAND.** Located off-shore from Cape Flattery - the most northwesterly point in the U. S. A. U. S. Lighthouse guarding the entrance to the Strait of Juan de Fuca may be clearly seen.

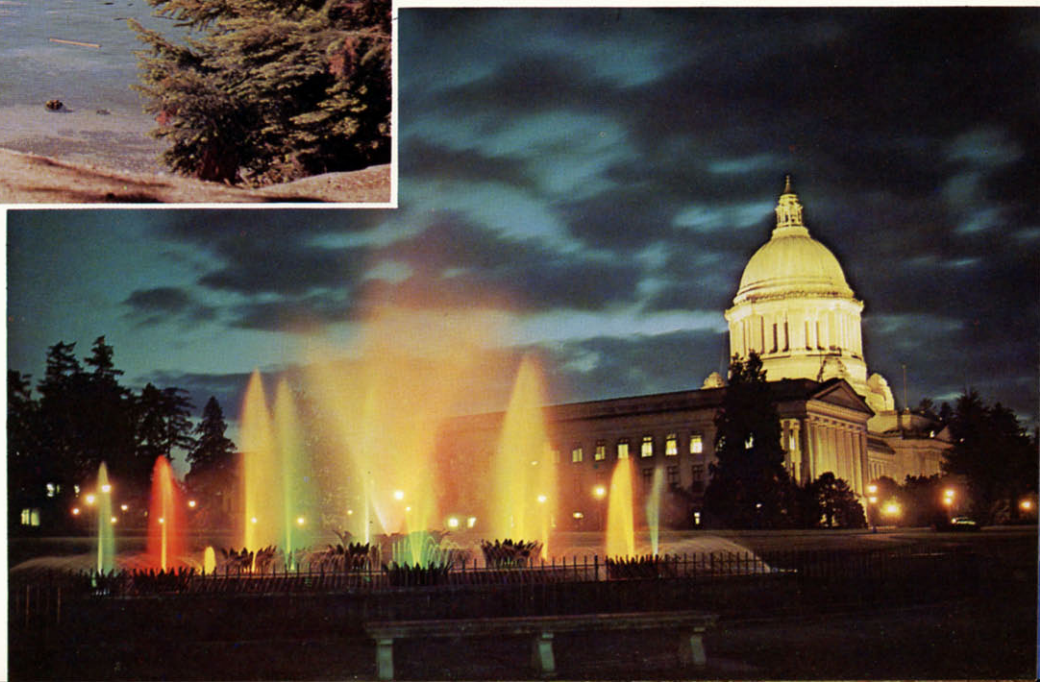
LA PUSH, WASHINGTON. An Indian fishing village together with well developed tourist facilities have made this a popular recreation center. ▶





◀ **MOUNT ST. HELENS AND SPIRIT LAKE.** A tourists' paradise. This beautiful spot, accessible by fine motor highway, satisfies alike the mountaineer, camper, fisherman and every lover of the great Out of Doors.

NIGHT VIEW — Legislative Bldg. and fountain ▶
Olympia, Washington.





◀ **MOUNT RAINIER AND NISQUALLY GLACIER.**
This autumn view shows the mountain's most active "Live" glacier.

PARADISE INN in winter.

Mount Rainier National Park, State of Wash-
ington. Late winter finds Paradise Inn, at the
5,500-foot level of Mount Rainier, deeply
banked by snow. Mazama Ridge in the back-
ground. Ski tows operate here on week ends;
midweek, skiers have the powder to them-
selves. ▶





◀ **MOUNT BAKER**, Elevation 10,750 feet, is a mecca for tourists, both winter and summer. One of the most beautiful alpine regions in Western Washington. Excellent year 'round highway brings the tourists to Heather Meadows where hotel accommodations and a modern chair lift are operated for their convenience.

INTERNATIONAL PEACE ARCH. Erected to commemorate over a hundred years of peace between Canada and the United States, this international park at Blaine, Washington, is the western end of an unfortified boundary extending across the entire North American Continent. ▶





HURRICANE RIDGE — OLYMPIC NATIONAL PARK.

◀ This aerial view looking north shows Hurricane Ridge Lodge in left center. Alpine flowers deck the meadows in summer, while, in winter, ski facilities draw throngs of winter sportsmen. Modern highway maintained throughout the year.

LAKE CRESCENT FROM STORM KING MT. The climb up this mountain rewards the hiker with an awe inspiring view of this beautiful lake in Olympic National Park. ▶





◀ **CANOE AND DECEPTION PASS BRIDGES. —**

Deception Pass State Park is the most beautiful salt-water recreational area in Washington's state park system. All types of tourist accommodations are available.

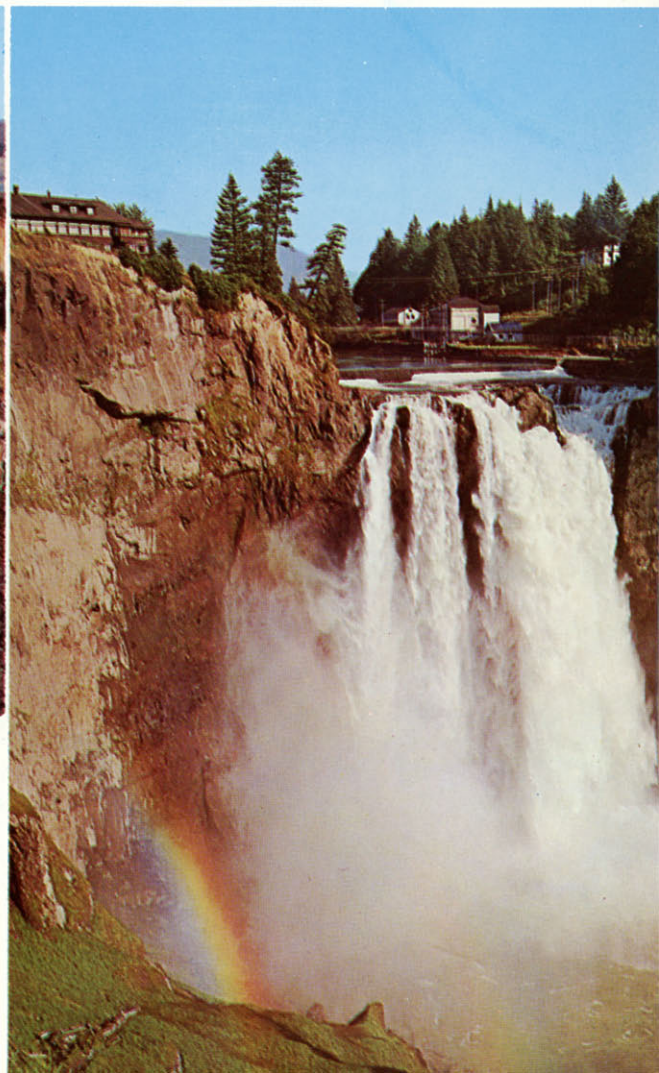
HOOD CANAL FLOATING BRIDGE. Longest floating bridge over tide water in the world. This engineering marvel connects the Kitsap Peninsula with the main body of the Olympic Peninsula. ▶





↑
Petrified Logs at Ginkgo State Park, along
Highway #10 near Vantage, Wash.

SNOQUALMIE FALLS — Perpetual snow fields
in the Cascade Mountains together with a
sheer drop of 268 feet provide "White Coal"
through one of Western Washington's pioneer
power developments. Snoqualmie Falls lodge
may be seen at left. ➡





MT. INDEX and SKYKOMISH RIVER

◀ One of the many beautiful scenes along Stevens Pass Highway in Washington State.

WASHINGTON - PINE CANYON HIGHWAY

This modern motor highway is a far cry from the primitive road which only a few years ago wound its way from the valley of the Columbia River to the fertile wheat lands near Water-ville, Wash. ▶



GRAND COULEE DAM FROM CROWN POINT. ▶

The world's largest concrete structure. Four-fifths of a mile long and 500 feet high. The spillways have an area of fifteen acres of falling water. The world's mightiest electrical generating plant is composed of 18 units having a combined output of two million, two hundred fifty thousand kilowatts.



◀ **THE LADY OF THE LAKE** makes a turn preparatory to landing at Stehekin, at the head of beautiful Lake Chelan.



◀ **WHEAT HARVESTING - INLAND EMPIRE.** These giant self-propelled combines cut, thresh and deliver to trucks for bulk storage.

COLUMBIA RIVER and U. S. HIGHWAY 10 ▶





SEATTLE, WASHINGTON

Host City to the World's Fair

(Upper left) Indian Totem Pole in West Seattle

(Upper right) Waterfront and Alaskan Way Viaduct with skyline rising in the background

(Lower left) Seattle's Lake Washington Floating Bridge brings the traveler in from the east on U. S. Highway 10.



SEATTLE from across ELLIOT BAY.

