

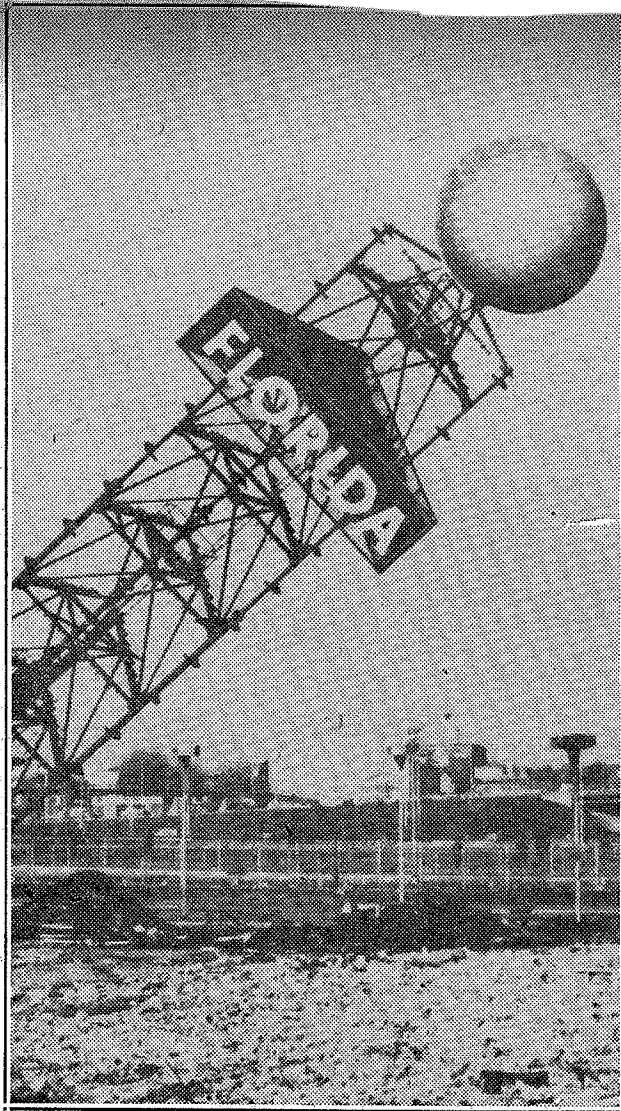
NEWS - FRIDAY, FEBRUARY 18, 1966



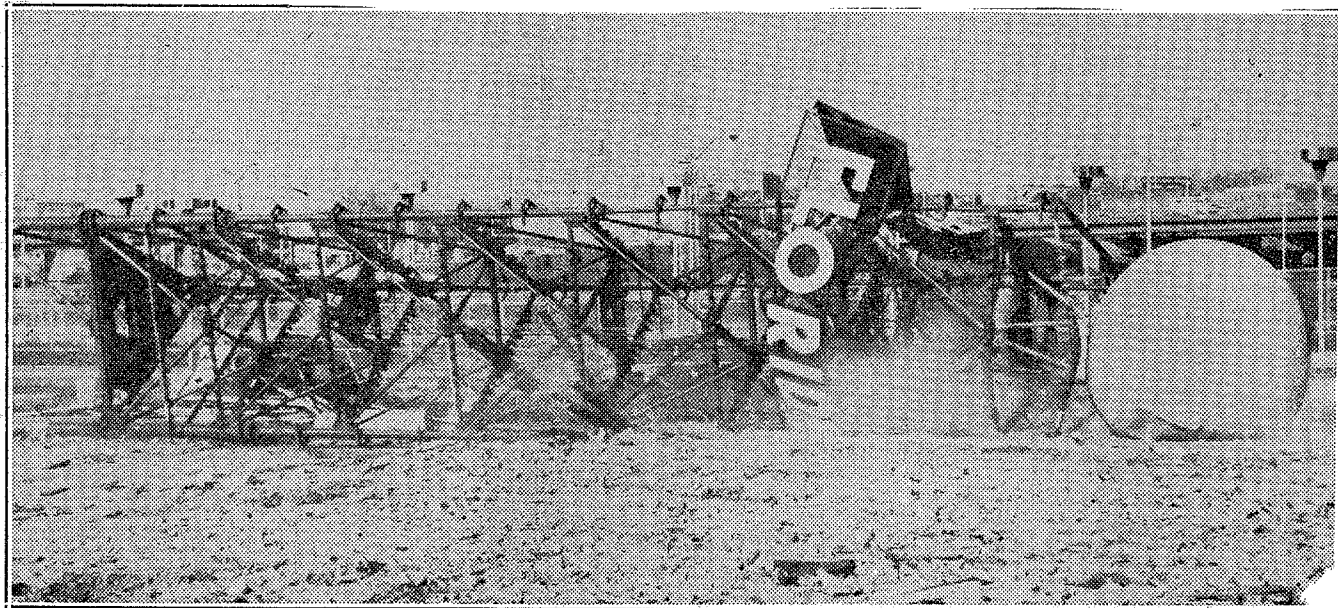
(Associated Press Wirefotos)

## They're Closing Down The Fruit Stand ...

The New York World's Fair has long ended and, with its close, many exhibits have bitten the dust. Here, Florida Pavilion's 100-ft. steel tower with 16-ft. orange topper begins to topple. Workers cut one leg of tower and pulled it down with cable. See fotos →



Tower gets a bit tipsy ...



And passes out of the scene as it crashes to earth.