

*The  
Japan  
Pavilion*

*Exhibits  
Restaurants  
Teahouse  
Japan Corner*

at  
THE NEW YORK WORLD'S FAIR  
1964-1965

日本館

## THE NIKKO SHRINE EXHIBIT

in The House of Japan

A new feature of the 1965 season

One of Japan's art treasures, this two and a half million dollar collection of exquisite miniature buildings duplicates in perfect detail the most famous pagodas and shrines of the 300 year old Toshogu Shrine complex at Nikko, Japan. Like the fabulous original the model blazes with gold leaf, bright lacquers, and fantastically detailed carvings and paintings — all at one-tenth scale. The ancient shrine is a monument to the 250-year rule of the Tokugawa Shogunate and is dedicated to its great founder, Tokugawa Ieyasu.\*

## THE STONE BUILDING

*"The finest single work of art created for the fair..."* N.Y. Times, April 25, 1964.

This moat-circled stone masterpiece, as well as the adjacent exhibit building, houses impressive industrial and commercial displays of modern day Japan.

## THE HOUSE OF JAPAN

### The Tatami Restaurant

Authentic Japanese cuisine. Guests will be seated on "tatami" (straw mats) and served at low tables by kimonoed hostesses and waitresses.

The Imperial Room may be reserved for special functions.

### Roof Beer Garden and Balcony

Low priced snacks and the famous Japanese beer in an outdoor setting.

Sake Bar, adjacent to the Tatami Room, serving all types of drinks.

Garden Cafeteria. New in 1965, this canopied, outdoor area will feature a low priced, delicious specialty — "Chicki-yaki". Half a charcoal-broiled chicken served with rice and coal slaw.

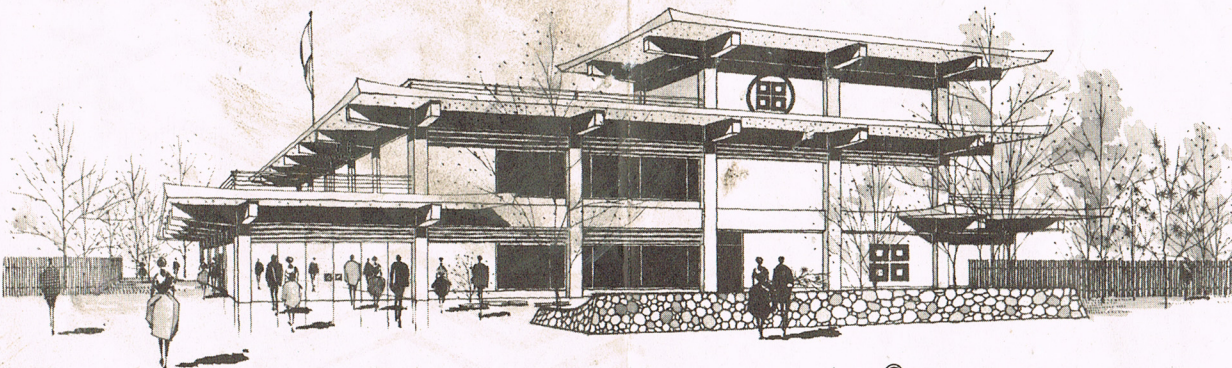
### PRICE RANGE

Complete luncheons . . . from \$1.50

Complete dinners . . . from \$2.15

Snacks . . . . . from \$ .75

"Chicki-yaki" Special . . . \$1.25



© 1963 New York World's Fair 1964-1965 Corporation



## SPECIAL ATTRACTIONS

### The

### Teahouse

The twenty minute ritual of the tea ceremony will be performed many times a day by a tea master and his group of graceful hostesses. The charm of this most traditional of all Japanese customs must be experienced to be appreciated.\*

### Japan

### Corner

Daily performances on the outdoor stage of Budo and other of the arts of war. Folk dancing on weekends. Other special events will be scheduled at intervals throughout the season.\*

\* Admission fee.

# THE JAPAN PAVILION

New York World's Fair  
Flushing, N.Y. 11380

Telephone: Area Code 212  
Main Office: 888-8692-3

*FOR DINING RESERVATIONS*  
PLEASE CALL: 888-7467

